

Grade 2 Deadbolts 260 Series



Overview

The 260 Series are heavy-duty deadbolt locks. A removable shroud surrounds the latchbolt and a free-spinning solid metal collar encases the cylinder, resisting most physical attacks. These locks are recommended for use on exterior and interior doors.

Compliance

- ANSI/BHMA 156.2 Series 4000, Grade 2
- Latch is UL / UBC 7-2-1997 Listed for 3-hour fire doors, included

Applications

- Offices
- Commercial Property
- Residences
- Multi-Family Buildings
- Industrial Sites
- Public Buildings.



R15852

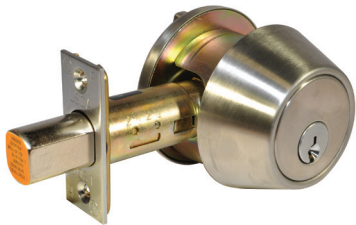
Grade 2 Deadbolts, 260 Series

Standard Features:

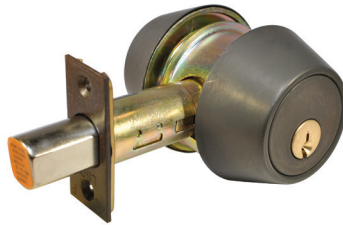
Bolt	Adjustable 2 $\frac{3}{8}$ " to 2 $\frac{3}{4}$ " Backset, or fixed 2 $\frac{3}{4}$ "
Handing	Non-Handed
Materials	Zinc, Brass, Steel
Strike	2 $\frac{3}{4}$ " x 1 $\frac{1}{8}$ " Reinforced type faceplate with 2 long screws
Door Prep	2 $\frac{1}{8}$ " Diameter bore, 1" crossbore Removable Anti-pry shield
Door Thickness	1 $\frac{3}{8}$ " - 1 $\frac{3}{4}$ "
Keying	Available with WR5 or SC4, rekeyable 6-pin, keyed alike in fours. Compatible with many retrofit cylinders such as LSDA C500 and many high-security brands. Small Format Interchangeable Core (SFIC) is available where the lock is prepped for an SFIC cylinder 6- or 7-pin. Large Format Interchangeable Core (LFIC) is available where the lock is prepped for a Schlage LFIC cylinder.

Grade 2 Deadbolts, 260 Series

Designs



Single Cylinder (260)
Shown in 32D Finish

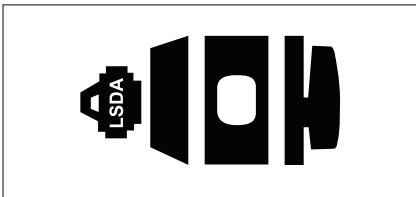


Double Cylinder (265)
Shown in 10BE Finish



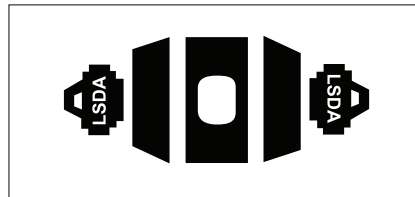
One Sided Indicator (269)
Shown in 26D Finish

Functions



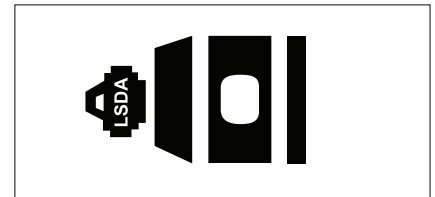
Single Cylinder

Locked or unlocked by a large ADA Compliant thumbturn inside and a key outside



Double Cylinder

Locked and unlocked by a key inside and outside



Single Cylinder with Indicator Deadbolt

Single sided with thumbturn on the inside, and indicator on the outside

Grade 2 Deadbolts, 260 Series

Finishes

US3 / 505 / 605
Bright Brass



US10B / 613
Oil Rubbed Bronze



US19 / BLK / 622
Matte Black Coated



US32D / 630
Satin Stainless Steel



US26D / 626
Satin Chrome

