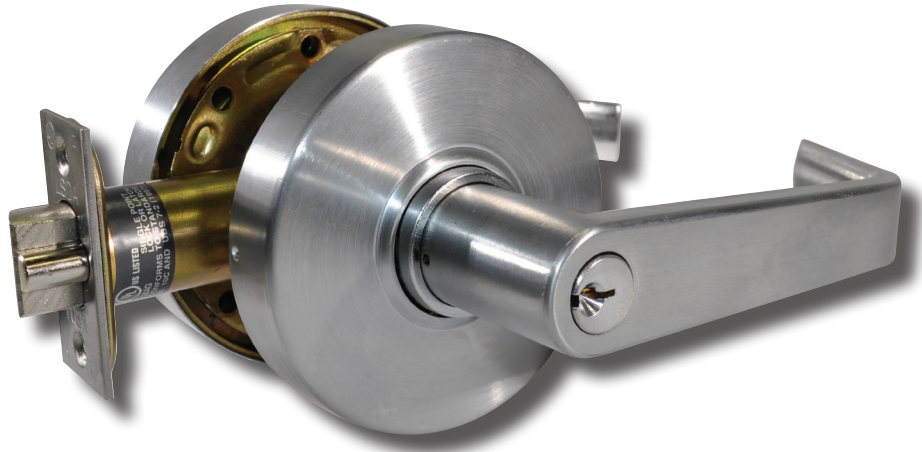


Grade 1 Lever Locks 5000 Series



Overview

The 5000-Series cylindrical lever locks are designed for high traffic applications. They are tested to last more than 4 million cycles. These heavy duty locks come with a popular flat rose design and a lever that is compliant with ADA and other accessibility codes. These locks are recommended for use on exterior and interior doors.

Compliance

- ANSI/BHMA 156.2 Series 4000, Grade 1
- Latch is UL Listed (USA and Canada, R14024) for 3-hour fire doors, included
- ADA: The Americans With Disabilities Act (ADA) states that locks shall be operable with one hand and shall not require tight grasping, tight pinching or twisting of the wrist.

Applications

- Offices
- Hospitals
- Schools
- Multi-Family Buildings
- Public Buildings



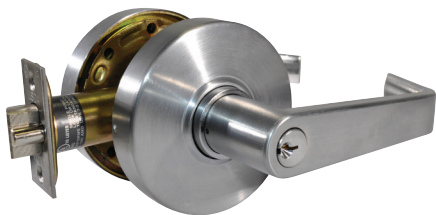
Grade 1 Lever Locks, 5000 Series

Standard Features:

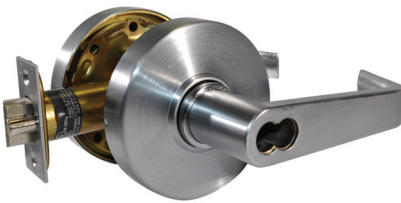
Latch	2¾" Backset UL Listed included; 2¾" UL Backset available
Handing	Non-Handed
Materials	Zinc Alloy, Bronze, Brass and Stainless Steel
Strike	4⅞" x 1¼" ANSI
Door Prep	2⅛" diameter bore, 1" crossbore
Door Thickness	1⅞" - 2⅞", Fixed Thru Bolts
Rose Diameter	3½"
Keying	Cylinders: Equipped with SC4 rekeyable 6-pin brass cylinders, compatible with LSDA Replacement C500 cylinders and many other retrofit cylinders including most high security brands. Keyed Different (KD) SFIC: Some models prepped for Small Format Interchangeable Core (SFIC), such as 6- or 7-Pin Best® style cores LFIC: Some models prepped for Large Format Interchangeable Cores compatible with Schlage.

Grade 1 Lever Locks, 5000 Series

Designs

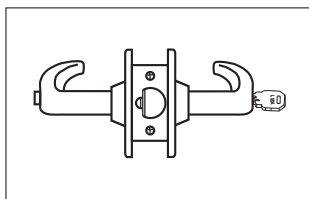


Lexington (LE)
Entrance Function
Shown in 26D Finish



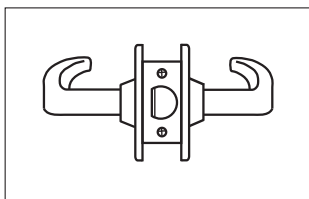
Lexington (LE)
Entrance Function, SFIC
Shown in 26D Finish

Functions



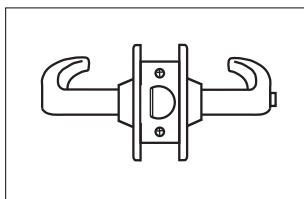
Entrance/Office

Pushing and turning inside button locks outside lever requiring use of key until button is manually unlocked. Pushing inside button locks outside lever until unlocked with a key or inside lever is turned. Inside lever always retracts latch. Available with or without Clutch.



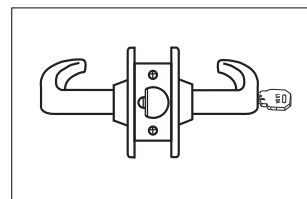
Passage

Both levers always retract the latch



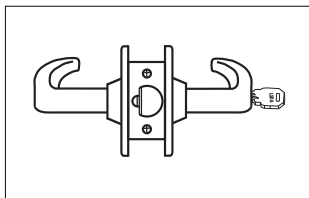
Privacy

Pushing inside button locks outside lever until inside lever is turned. Emergency tool can be used to unlock outside lever. Inside lever always retracts the latch.



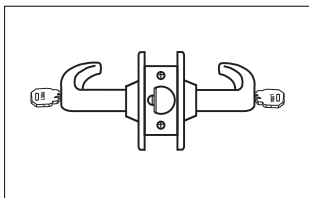
Storeroom

Outside lever never retracts the latch. Entrance by key only. Inside lever always retracts the latch. Available with or without Clutch.



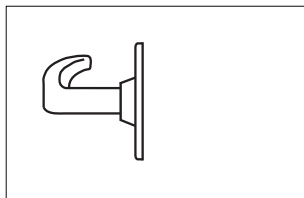
Classroom

Outside lever is locked and unlocked with a key in the outside cylinder. The inside lever always retracts the latch. Available with or without Clutch.



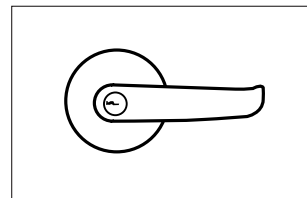
Classroom Intruder

Key in either lever locks or unlocks outside lever. Inside lever is always unlocked and free for egress. Available with or without Clutch.



Dummy

Pull only, one side of door trim.



Benefits of a Clutch Lever

Clutch mechanism, or "free-wheeling" design offers an advantage over rigid locked leversets by reducing the torque applied to the outside lever

Grade 1 Lever Locks, 5000 Series

How to Order

Entrance/Office

Mfr.#	Desc.	EZ#
5000LE IC26D	SFIC, Less Core	103377
5000LE26D	SC4 Keyway	103376
C5000LE26D	SC4 Keyway, w/Clutch	103351

Passage

Mfr.#	Desc.	EZ#
5100LE26D	Passage	103363

Privacy

Mfr.#	Desc.	EZ#
5200LE26D	26D Finish	103366

Storeroom

Mfr.#	Desc.	EZ#
5400LE IC26D	SFIC, Less Core	103381
5400LE26D	SC4	103380
C5400LE26D	SC4, w/Clutch	103355

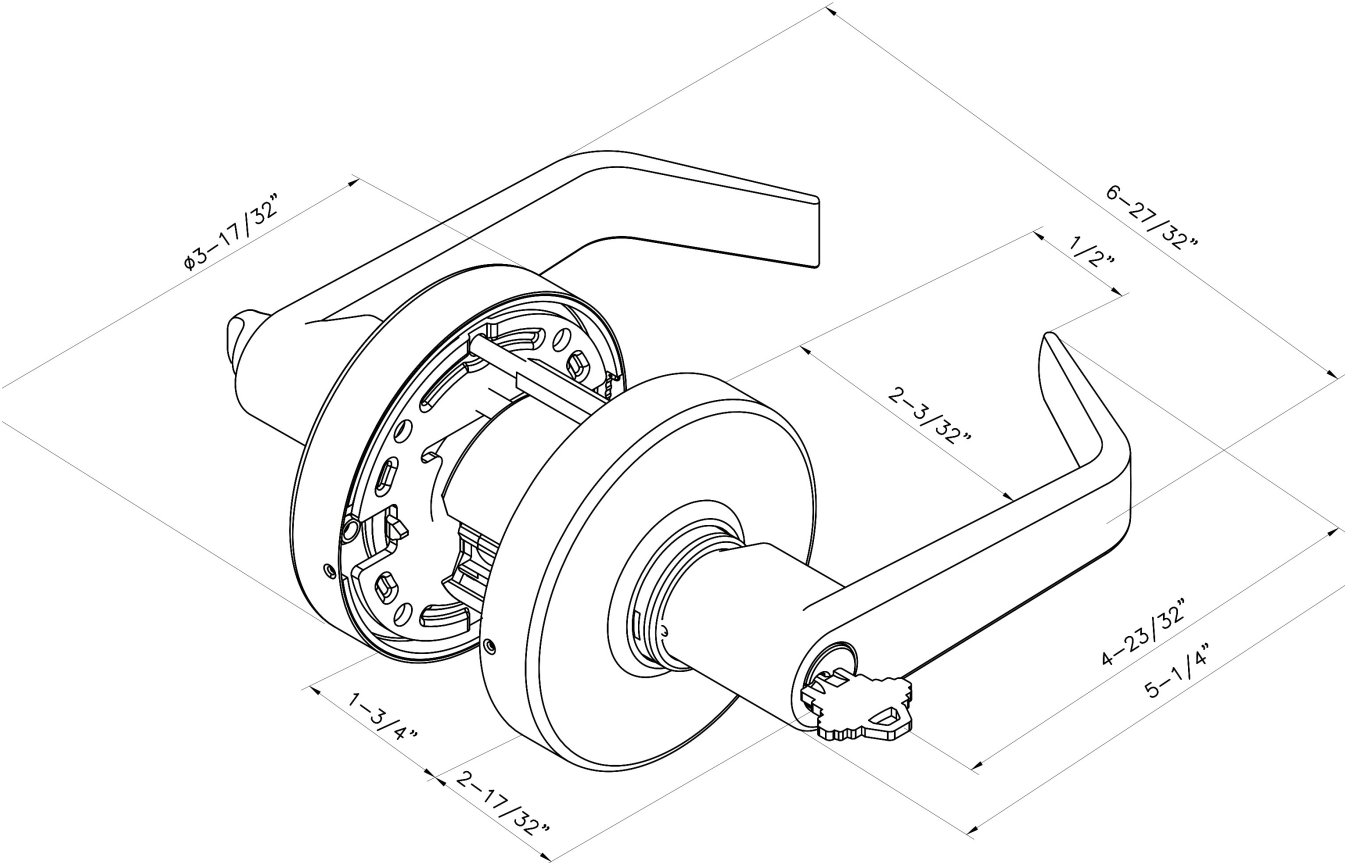
Classroom

Mfr.#	Desc.	EZ#
5500LE26D	SC4	103384
5500LE IC26D	SFIC, Less Core	103385
C5500LE26D	SC4, w/Clutch	103359

** Locksets that secure both sides of the door are controlled by building codes and the Life Safety Code. In an emergency exit situation, failure to quickly unlock the inside knob could be hazardous or even fatal.*

Grade 1 Lever Locks, 5000 Series

Dimensions



Grade 1 Lever Locks, 5000 Series

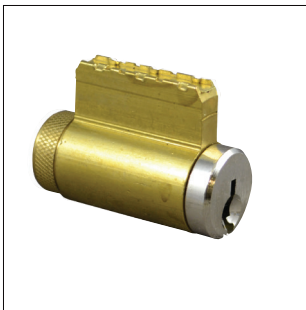
Parts and Accessories



ULDL

- Deadlatches, 2 $\frac{3}{8}$ " or 2 $\frac{3}{4}$ " Backset
- UL Listed for 3-hour Fire Rating
- Finishes: US32D

Mfr.#	EZ#
ULDL2-3/8 32D	103371



C500

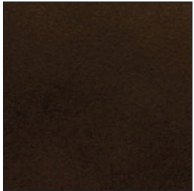
- Replacement cylinders, various finishes and keyways available
- Keyways:
 - Arrow K7 (AW)
 - Corbin 60 (C60)
 - Kwikset 1063 (KW)
 - Sargent LA (LA)
 - LSA (LSA)
 - Russwin 981 (R981)
 - Russwin D1 (RD1)
 - Schlage C (SCC)
 - Schlage E (SCE)
 - Schlage C-K (SCK)
 - Weiser 1555 (WE)
 - Yale 8 (YA8)
- Finishes:
 - US26D

Mfr.#	EZ#
C500AW26D	076148
C500C60 26D	076152
C500LA26D	076158
C500LSA26D	076160
C500R981 26D	076163
C500RD1 26D	076162
C500SCC26D	076165
C500SCE26D	076167
C500SCK26D	076169
C500WE26D	076171
C500YA8 26D	076173

Grade 1 Lever Locks, 5000 Series

Finishes

10BE / 613E
Dark Oxidized
Satin Bronze



US26D / 626
Satin Chrome

