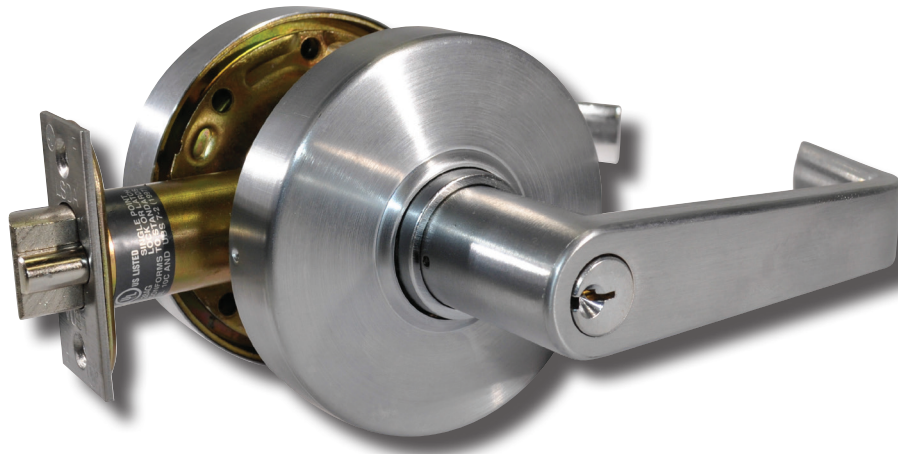


Grade 1 Lever Locks 5000 Series



Overview

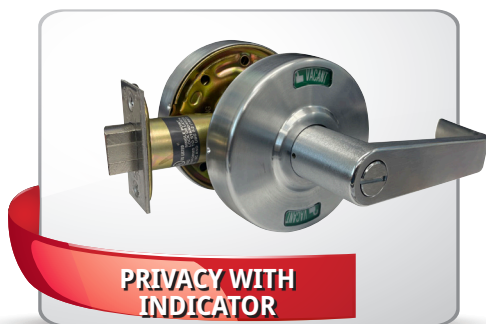
The 5000-Series cylindrical lever locks are designed for high traffic applications. They are tested to last more than 4 million cycles. These heavy duty locks come with a popular flat rose design and a lever that is compliant with ADA and other accessibility codes. These locks are recommended for use on exterior and interior doors.

Compliance

- ANSI/BHMA 156.2 Series 4000, Grade 1
- Latch is UL Listed (USA and Canada, R14024) for 3-hour fire doors, included
- ADA: The Americans With Disabilities Act (ADA) states that locks shall be operable with one hand and shall not require tight grasping, tight pinching or twisting of the wrist.

Applications

- Offices
- Hospitals
- Schools
- Multi-Family Buildings
- Public Buildings



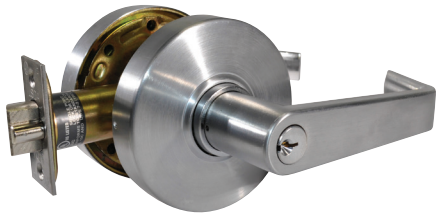
Grade 1 Lever Locks, 5000 Series

Standard Features:

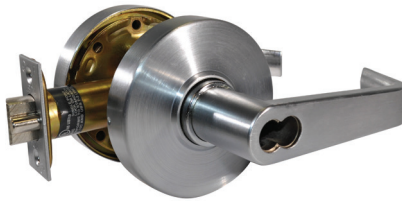
Latch	2¾" Backset UL Listed included; 2⅜" UL Backset available
Handing	Non-Handed
Materials	Zinc Alloy, Bronze, Brass and Stainless Steel
Strike	4⅞" x 1¼" ANSI
Door Prep	2⅞" diameter bore, 1" crossbore
Door Thickness	1⅞" - 2⅞", Fixed Thru Bolts
Rose Diameter	3½"
Keying	Cylinders: Equipped with SC4 rekeyable 6-pin brass cylinders, compatible with LSDA Replacement C500 cylinders and many other retrofit cylinders including most high security brands. Keyed Different (KD) SFIC: Some models prepped for Small Format Interchangeable Core (SFIC), such as 6- or 7-Pin Best® style cores LFIC: Some models prepped for Large Format Interchangeable Cores compatible with Schlage.

Grade 1 Lever Locks, 5000 Series

Designs



Lexington (LE)
Entrance Function
Shown in 26D Finish

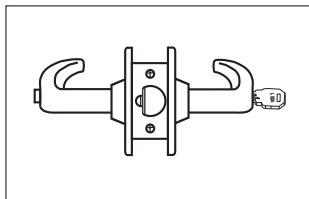


Lexington (LE)
Entrance Function, SFIC
Shown in 26D Finish



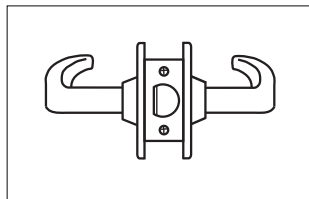
Lexington (LE)
Privacy with Indicator
Shown in 26D Finish

Functions



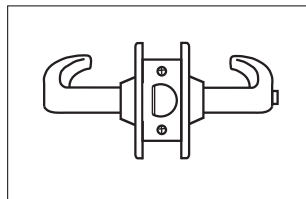
Entrance/Office

Pushing and turning inside button locks outside lever requiring use of key until button is manually unlocked. Pushing inside button locks outside lever until unlocked with a key or inside lever is turned. Inside lever always retracts latch. Available with or without Clutch.



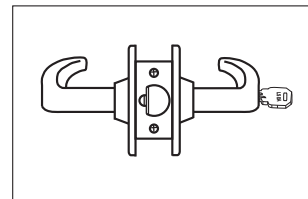
Passage

Both levers always retract the latch



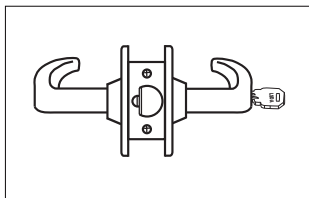
Privacy

Pushing inside button locks outside lever until inside lever is turned. Emergency tool can be used to unlock outside lever. Inside lever always retracts the latch.



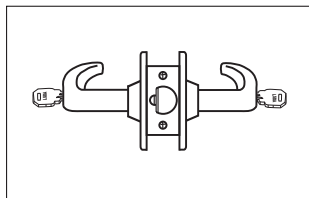
Storeroom

Outside lever never retracts the latch. Entrance by key only. Inside lever always retracts the latch. Available with or without Clutch.



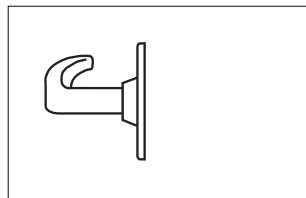
Classroom

Outside lever is locked and unlocked with a key in the outside cylinder. The inside lever always retracts the latch. Available with or without Clutch.



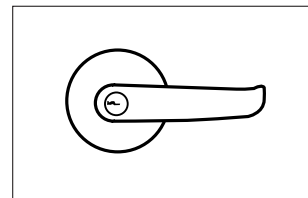
Classroom Intruder

Key in either lever locks or unlocks outside lever. Inside lever is always unlocked and free for egress. Available with or without Clutch.



Dummy

Pull only, one side of door trim.



Benefits of a Clutch Lever

Clutch mechanism, or "free-wheeling" design offers an advantage over rigid locked leversets by reducing the torque applied to the outside lever

Grade 1 Lever Locks, 5000 Series

How to Order

Entrance/Office

Mfr.#	Desc.	EZ#
5000LE26D	SC4 Keyway	103376
5000LE10BE	SC4 Keyway	103379
5000LE IC26D	SFIC, Less Core	103377
5000LE LFIC26D S	LFIC, Less Core	183604
C5000LE26D	SC4 Keyway, w/Clutch	103351
C5000LE10BE	SC4 Keyway, w/Clutch	103354
C5000LE IC26D	SFIC, w/Clutch, Less Core	103352
C5000LE LFIC26D S	LFIC, w/Clutch, Less Core	183606

Passage

Mfr.#	Desc.	EZ#
5100LE26D	Passage	103363
5100LE10BE	Passage	103365

Privacy

Mfr.#	Desc.	EZ#
5200LE26D	26D Finish	103366
5200LE10BE	10BE Finish	103368

Privacy with Indicator

Mfr.#	Desc.	EZ#
5300LE26D	26D Finish	187024

Storeroom

Mfr.#	Desc.	EZ#
5400LE26D	SC4	103380
5400LE10BE	SC4	103383
5400LE IC26D	SFIC, Less Core	103381
5400LE LFIC26D S	LFIC, Less Core	183605
C5400LE26D	SC4, w/Clutch	103355
C5400LE IC26D	SFIC, w/Clutch, Less Core	103356
C5400LE LFIC26D S	LFIC, w/Clutch, Less Core	183607

Classroom

Mfr.#	Desc.	EZ#
5500LE26D	SC4	103384
5500LE IC26D	SFIC, Less Core	103385
C5500LE26D	SC4, w/Clutch	103359
C5500LE IC26D	SFIC, w/Clutch, Less Core	103360

Classroom Intruder*

Mfr.#	Desc.	EZ#
5800LE26D	SC4	107037
5800LE IC26D	SFIC, Less Core	107038
5800LE10BE	SC4	107039

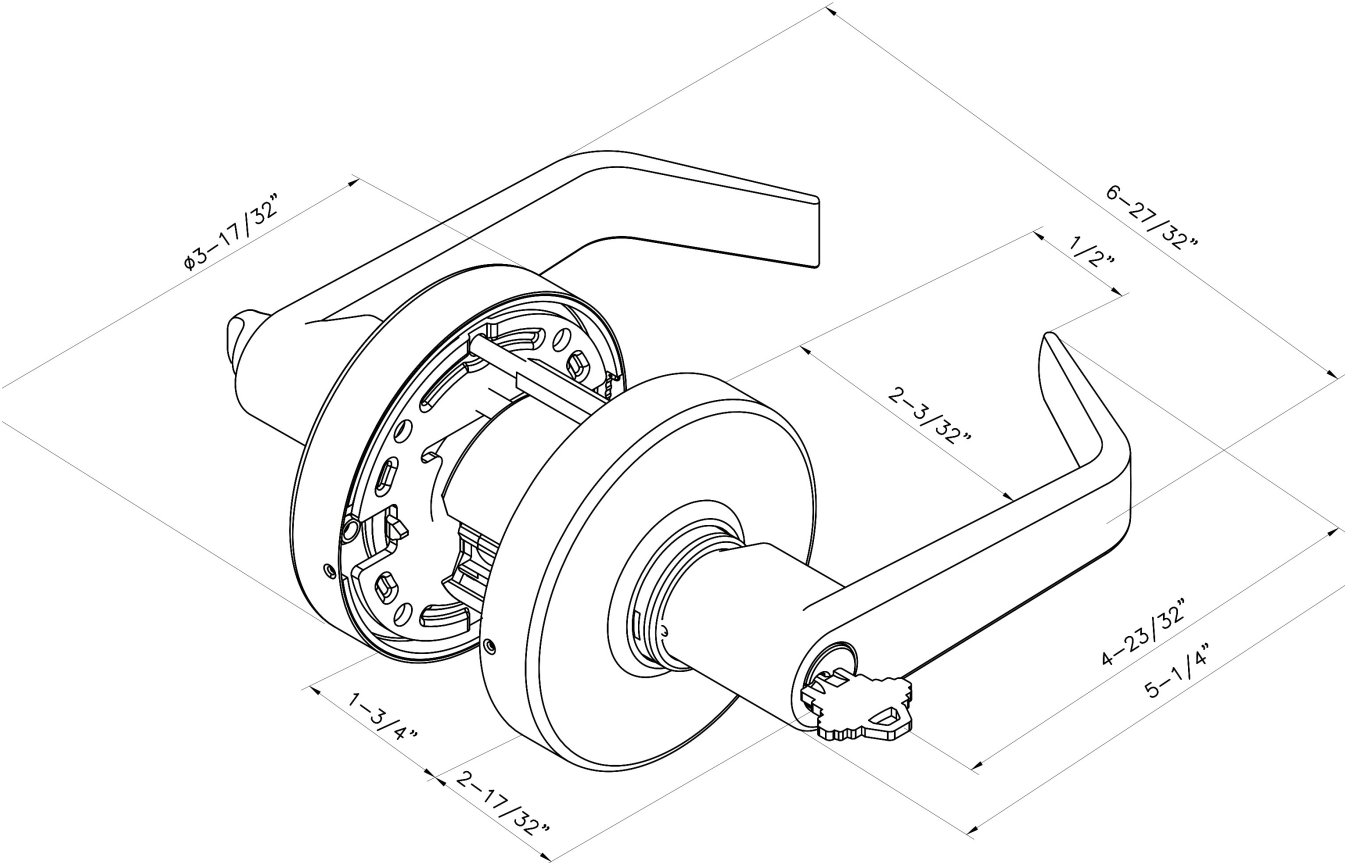
Dummy

Mfr.#	Desc.	EZ#
5600LE26D	Dummy	105965

* Locksets that secure both sides of the door are controlled by building codes and the Life Safety Code. In an emergency exit situation, failure to quickly unlock the inside knob could be hazardous or even fatal.

Grade 1 Lever Locks, 5000 Series

Dimensions



Grade 1 Lever Locks, 5000 Series

Parts and Accessories



ULDL

- Deadlatches, 2³/₈" or 2³/₄" Backset
- UL Listed for 3-hour Fire Rating
- Finishes: US32D

Mfr.#	EZ#
ULDL2-3/8 32D	103371
ULDL2-3/8 10BE	103370
ULDL2-3/4 32D	105679



ULSL

- Springlatches, 2³/₈" or 2³/₄" Backset
- UL Listed for 3-hour Fire Rating
- Finishes: US32D

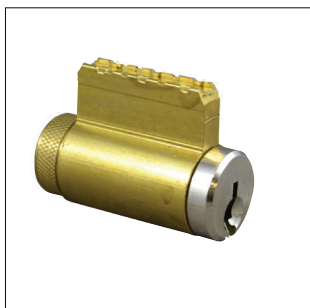
Mfr.#	EZ#
ULSL2-3/8 32D	103374
ULSL2-3/4 32D	106444



T STRIKE

- Optional T-Strike
- Finishes: US32D

Mfr.#	EZ#
T STRIKE32D	066996
T STRIKE3	066995



C500

- Replacement cylinders, various finishes and keyways available
- Keyways:
 - Arrow K7 (AW)
 - Corbin 60 (C60)
 - Composite (CO)
 - Corbin L4 (CRL)
 - Kwikset 1063 (KW)
 - Sargent LA (LA)
 - Sargent LA-LC (LAC)
 - LSA (LSA)
 - Russwin 981 (R981)
 - Russwin D1 (RD1)
 - Schlage C (SCC)
 - Schlage E (SCE)
 - Schlage C-K (SCK)
 - Weiser 1555 (WE)
 - Yale 8 (YA8)
 - Yale GA (YGA)
- Finishes:
 - US3
 - US26D

Mfr.#	EZ#	Mfr.#	EZ#
C500AW26D	076148	C500R981 26D	076163
C500AW3	076147	C500RD1 26D	076162
C500C60 26D	076152	C500RD1 3	076161
C500C60 3	076151	C500SCC26D	076165
C500CO26D	076150	C500SCC3	076164
C500CO3	076149	C500SCE26D	076167
C500CRL4 26D	102415	C500SCK26D	076169
C500CRL4 3	102416	C500SCK3	076168
C500KW26D	076156	C500WE26D	076171
C500KW3	076155	C500WE3	076170
C500LA26D	076158	C500YA8 26D	076173
C500LA3	076157	C500YA8 3	076172
C500LAC26D	102417	C500YGA26D	102419
C500LAC3	102418	C500YGA3	102420
C500LSA26D	076160		
C500LSA3	076159		

Grade 1 Lever Locks, 5000 Series

Parts and Accessories



TPSFIC6

- IC Tailpiece
- 6-Pin

Mfr.#	EZ#
TPSFIC6	061315



TPSFIC7

- IC Tailpiece
- 7-Pin

Mfr.#	EZ#
TPSFIC7	061316



FTSFIC

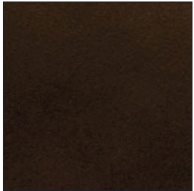
- SFIC Tailpiece
- Minimum 10

Mfr.#	EZ#
FTSFIC	103375

Grade 1 Lever Locks, 5000 Series

Finishes

10BE / 613E
Dark Oxidized
Satin Bronze



US26D / 626
Satin Chrome

