



# 800 SERIES GRADE 2 LEVER LOCKS

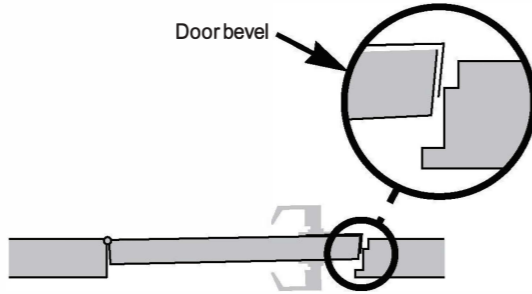
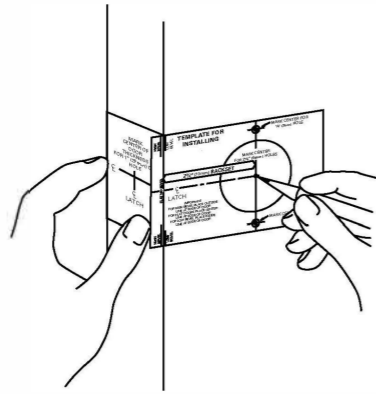
## Instructions For Installing Cylindrical Leverset

Screw Type Through-Bolts are provided and recommended for use on high frequency doors.

**NOTE :** Accurate door preparation is essential for proper functioning of this lock. Follow template and instructions carefully.

The anti - sagging mechanism of handle in cylindrical leverset has a patent pending in the U.S. and foreign countries.

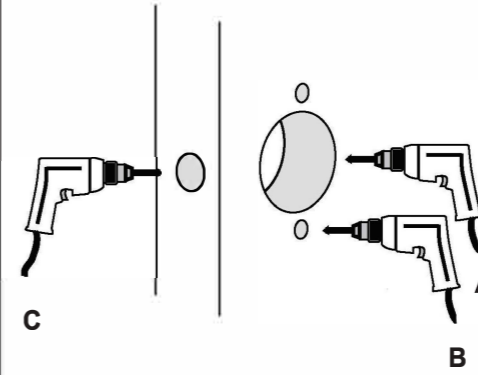
### Door and jamb preparation



### 1. Mark door

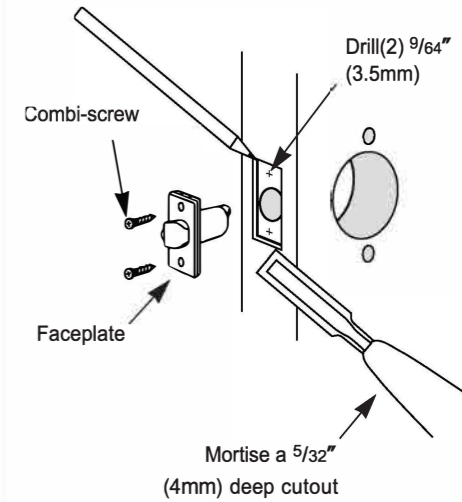
- A. Check lock for proper backset before marking.
- NOTE :** Through- Bolts are provided and recommended for use on high frequency doors.
- B. Detach stub.
- C. Fold template at correct marking for door bevel (high or low bevel, or flat).
- D. Position template at correct height (recommended height for centerline is 38" (97cm) from floor).
- E. Mark center for  $2\frac{1}{8}"$  (54mm) hole.
- F. Also mark for  $(2)\frac{5}{16}"$  (8mm) holes for through-bolt type.
- NOTE :** Do not mark  $(2)\frac{5}{16}"$  holes for locks No through-bolt type.
- G. Use stub to mark center of door thickness.
- HINT :** For retrofitting existing lock holes, fold template in half to position for the mounting screw.

### 2. Drill holes



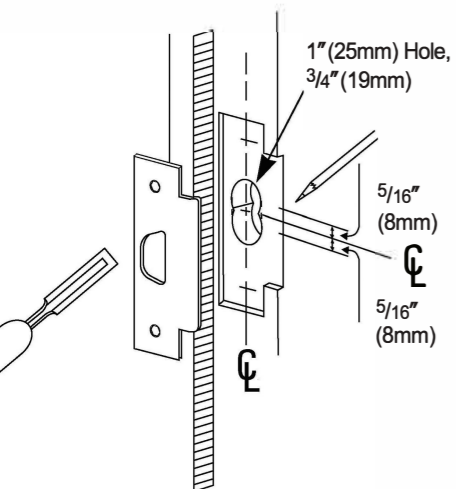
- A. Drill a  $2\frac{1}{8}"$  (54mm) hole through door (from both sides to avoid damaging door).
- B. Drill  $(2)\frac{5}{16}"$  (8mm) holes for through-bolt
- NOTE :** Do not drill the  $(2)\frac{5}{16}"$  (8mm) holes for locks No through - bolt type
- C. Drill a  $1"$  (25mm) or  $\frac{7}{8}"$  (22mm) (depending on latch housing diameter) in door edge.

### 3. Install latch

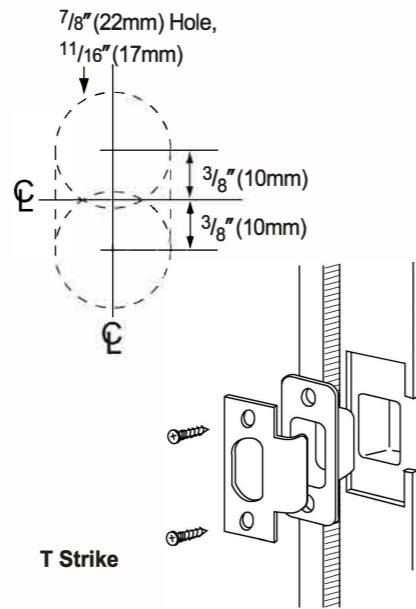


- A. Insert latch into hole. Trace around faceplate
- B. Chisel out wood until faceplate fits flat with door edge.
- C. Drill  $(2)\frac{9}{64}"$  (3.5mm) holes and secure latch unit with combi-screws supplied.
- D. Fasten latch to door so that beveled side of latchbolt faces jamb.

### 4. Install strike



ASA Strike - Standard



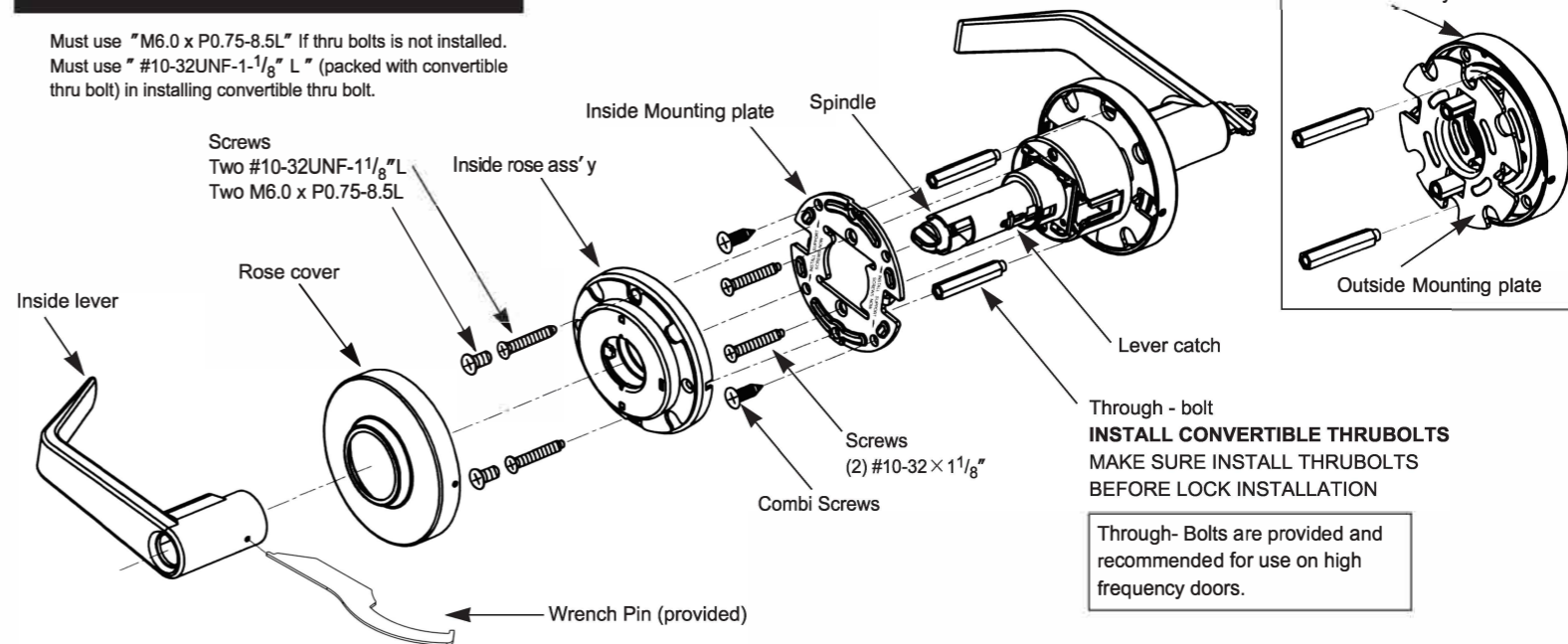
T Strike

- A. Mark vertical line and heightline on jamb exactly opposite center of latch hole.
- B. Drill  $(2)\ 1"$  (25mm) holes,  $\frac{3}{4}"$  (19mm) deep,  $\frac{5}{16}"$  (8mm) above and below heightline.
- C. Use strike plate to pattern for cutout. Clean out hole and install strike.

- A. Mark vertical line and heightline on jamb exactly opposite center of latch hole.
- B. Drill  $(2)\ \frac{7}{8}"$  (22mm) holes,  $1\frac{1}{16}"$  (17mm) deep, into doorjamb as shown.
- C. Mortise a cutout for the strike. Use strike as a pattern for the mortise.
- (Strike should fit flush with the doorjamb.)

## Lock Installation

Must use "M6.0 x P0.75-8.5L" if thru bolts is not installed. Must use "#10-32UNF-1-1/8" L" (packed with convertible thru bolt) in installing convertible thru bolt.



- A. Disassemble inside lever.
- B. Twist inside rose cover to remove.
- C. Disassemble inside rose assembly.

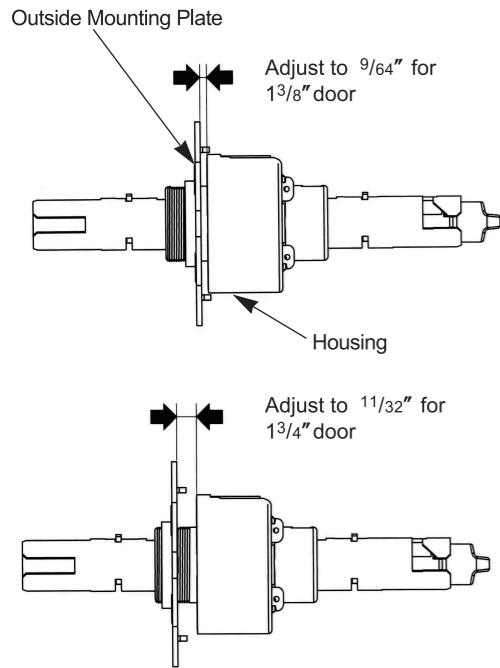
- D. Disassemble inside mounting plate.
- E. Insert the convertible thrubolts(provided) into the tapped holes in the outside rose ass'y.

Through- Bolts are provided and recommended for use on high frequency doors.

## 6. Adjust for door thickness

**LOCKSET IS FACTORY PRESET FOR 1 3/4" (45mm) DOORS.**

See step 6. to center chassis in door or to change adjustment of other door thicknesses



ADJUSTMENT FOR DOOR THICKNESS

**It can be adjusted for door thickness range from 1 3/8" up to 2"**

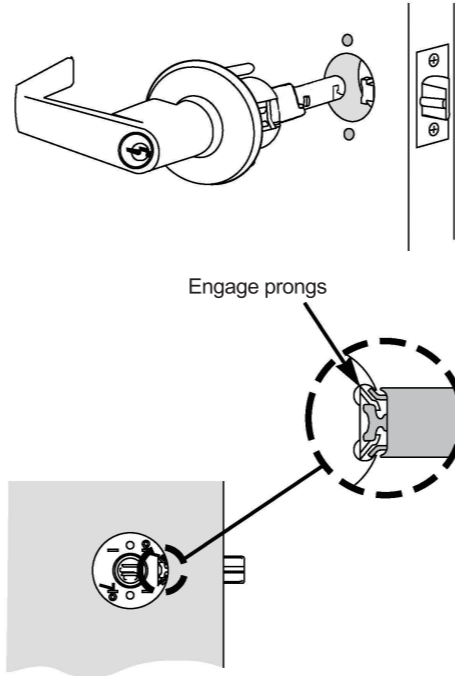
For adjustment of door thickness, follow step 11, then :

- Adjust outside mounting plate for proper door thickness. At final position, the screw post hole must be in line with holes in lockbody.
- Slide outside rose ass'y with rose cover onto spindle with the wider notch at inside diameter in line with lever catch.

The screw posts will enter the holes pre-aligned between outside mounting plate and lockbody.

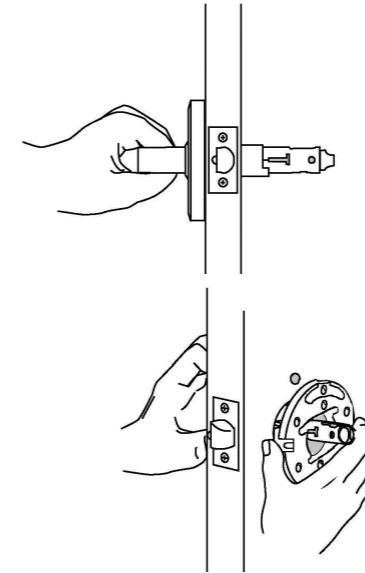
**NOTE:** See Step 11, must be done if you have to make adjustments for door thickness

## 7. Install outside lock unit



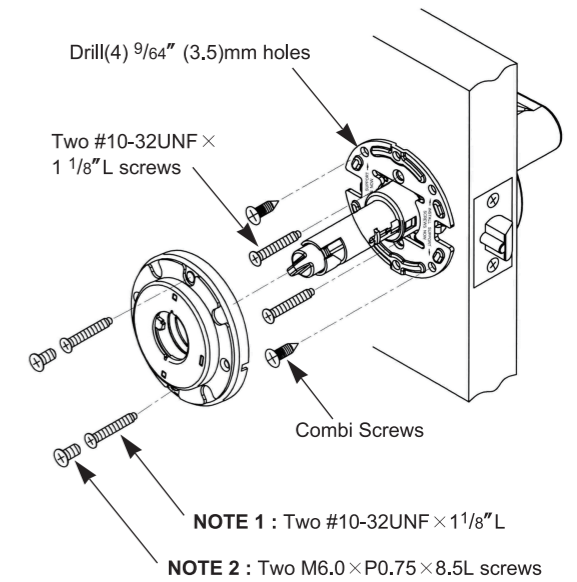
**IMPORTANT :** Place outside lock unit into position. Make sure that latch prongs engage chassis housing, and retractor engages latch bar

## 8. Install mounting plate.

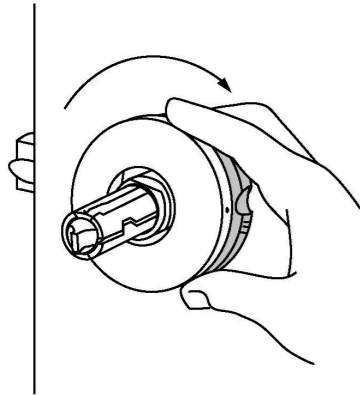


- Hold outside unit in place.
  - Put mounting plate into position on chassis.
  - Place mounting plate. Tighten it to lock body with two #10 - 32UNF x 1 1/8" L screws.
  - Drill (4) 9/64" (3.5mm) holes and secure the mounting plate with four combi-screws supplied. **(THIS MUST BE DONE TO FIRMLY ANCHOR LOCK TO DOOR-ESPECIALLY WHEN THRU-BOLTS ARE NOT USED)**
  - Place inside rose ass'y. Tighten it to lock body with screws supplied.
- NOTE 1 :** Two #10 - 32UNF x 1 1/8" L (★) screws can be used for outside through - bolt type only.  
**NOTE 2 :** Two M6.0 x P0.75 x 8.5L screws can be used for no through - bolt type only.

**CAUTION :** When using power screwdriver for installation, set to minimum torque setting.

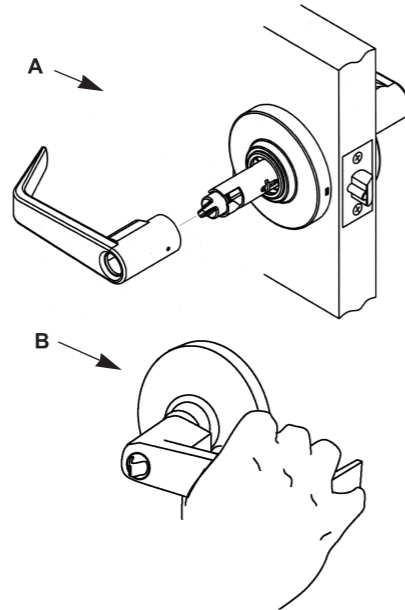


## 9. Install inside rose assembly



- Align dimples on rose with grooves in inside rose assembly.
- Place rose against door and rotate clockwise until dimples snap into slots next to the grooves.

## 10. Install inside lever

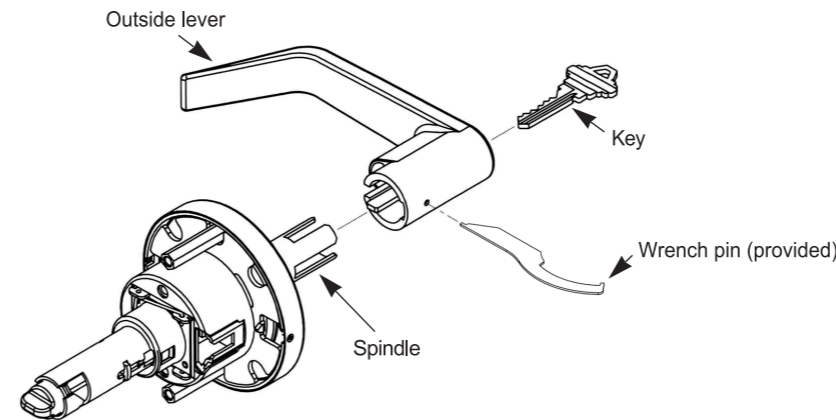


- Slide inside lever onto spindle. Push lever completely into place. (Pull on lever to make sure that catch is fully engaged.)
- Test operation of lock to make sure you have followed instructions correctly.

## How to remove & reassemble outside lever

### 11. Remove outside lever

**NOTE:** Required if you re-key the lock or adjust the door thickness (See Step 6)



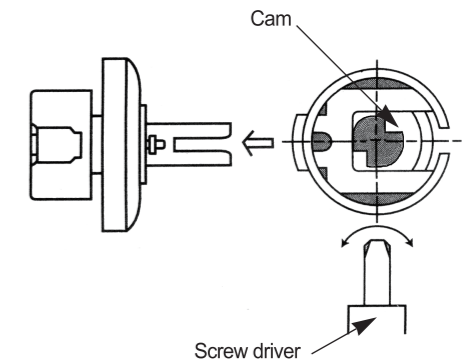
- Insert key into cylinder. Insert wrench pin(provided) into hole in lever. Turn key one - quarter turn and push pin to depress lever catch. Slide the lever from spindle.

## 12. Reassemble outside lever

Reverse Step 11 to reassemble levers.

- To reassemble. Put a cylinder and key in lever.
- Push cylinder further in until it engages retractor.
- Turn key 90° clockwise and hold a key.
- Depress lever catch and push lever (Not key) in until it clicks then release a key.

## CAUTION FOR CLASSROOM FUNCTION



- (1) Locking:** Turn key counter-clockwise. Return to take a key out.
- (2) Unlocking:** Turn key clockwise. Return to take a key out.

Make sure to turn cam counter clockwise with a screw driver as far as it will go before reassembling of cylinder to prevent mis-positioning of cam for classroom function.