

Grade 3 Lever Locks 50 Series



Overview

The 50-Series levers are residential grade tubular locks in a variety of attractive styles. Available in several finishes, they can be used in various residential and light commercial applications. These locks are recommended for use on exterior and interior doors.

Compliance

- Meets ANSI/BHMA 156.2 Series 4000, Grade 3
- ADA: The Americans With Disabilities Act (ADA) states that locks shall be operable with one hand and shall not require tight grasping, tight pinching or twisting of the wrist.

Applications

- Houses
- Apartments
- Offices
- Condominiums



Grade 3 Lever Locks, 50 Series

Standard Features:

Latch	2 $\frac{3}{8}$ " and 2 $\frac{3}{4}$ " Backset , 45° lever travel
Handing	Field Reversible, unless indicated
Materials	Zinc Die Cast, Brass, Steel
Strike	2 $\frac{1}{4}$ " full lip
Door Prep	2 $\frac{1}{8}$ " diameter bore, 1" crossbore; 2 $\frac{1}{4}$ " x 1" latch face, concealed screws
Door Thickness	1 $\frac{3}{8}$ " - 1 $\frac{3}{4}$ " standard
Rose Diameter	2 $\frac{1}{2}$ "
Keying	Available in KW1, WR3, or SC1; Rekeyable 5-pin; Keyed Alike (KA4) in four where indicated

Grade 3 Lever Locks, 50 Series

Designs



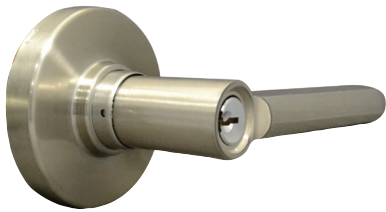
Lyon (LY)



LaSalle (LA)



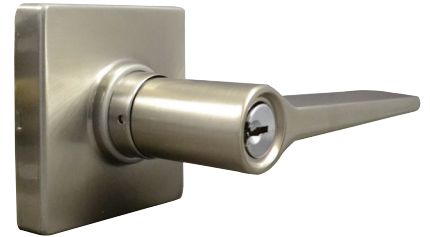
Lucerne (LU)



Berkeley (BE)

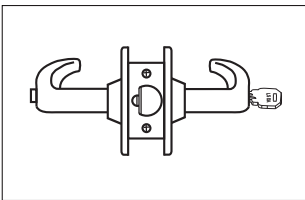


Grand Teton (GT)



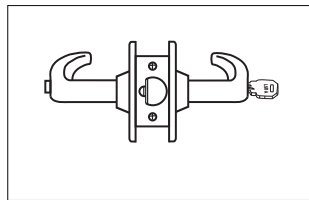
New England (NE)

Functions



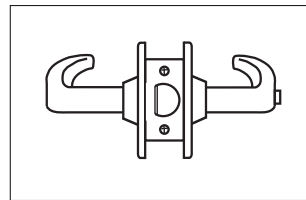
Entry

Depressing the inside push-button locks both levers requiring use of key outside or operation of the inside lever to unlock the door.



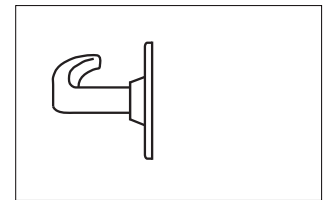
Passage/Hall/Closet

Both levers always retract the latch.



Privacy/Bed/Bath

Depressing the inside push-button locks both levers. Operation of the inside lever unlocks the door. Emergency tool can be used to unlock from the outside.



Dummy

Pull only, one side of door trim.

Grade 3 Lever Locks, 50 Series

Finishes

US3 / 505 / 605
Bright Brass



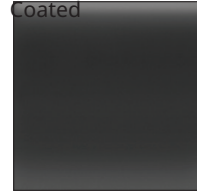
US11P / 616E
Venetian Bronze



US15 / 619
Satin Nickel



US19 / BLK / 622
Matte Black
Coated



US26D / 626
Satin Chrome

