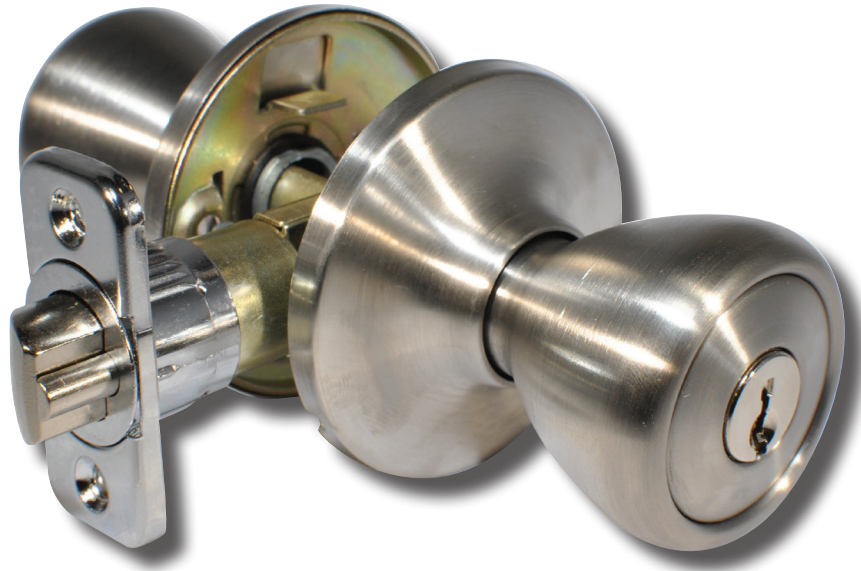


Grade 3 Knob Locks 70 Series



Overview

The 70-Series knobs are residential grade tubular locks in a classic style and available in 3 finishes. These locks feature a half moon spindle and a rounded tulip knob style matching the most popular residential knobs.

Compliance

- ANSI/BHMA 156.2 Series 4000, Grade 3

Applications

- Houses
- Apartments



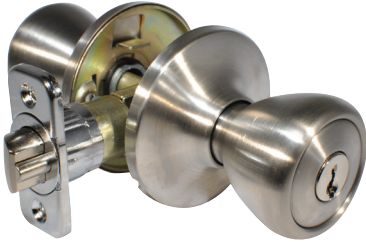
Grade 3 Knob Locks, 70 Series

Standard Features:

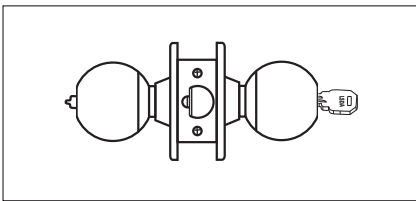
Latch	Adjustable 2 $\frac{3}{8}$ " and 2 $\frac{3}{4}$ " Backset, Full $\frac{1}{2}$ " latch projection 6-Way Latches come with square corner and radius corner faceplates, and can be installed as drive-in latches 2-Way latches are adjustable and fit $\frac{7}{8}$ " crossbore
Handing	Non-Handed
Materials	Stainless Steel or Brass
Strike	2 $\frac{1}{4}$ " full lip
Door Prep	2 $\frac{1}{8}$ " diameter bore, 1" crossbore; 2 $\frac{1}{4}$ " x 1" latch face
Door Thickness	1 $\frac{3}{8}$ " x 1 $\frac{3}{4}$ " standard
Rose Diameter	2 $\frac{19}{32}$ "
Keying	KW1 cylinder; Rekeyable, 5-pin; Keyed Alike (KA4) in four

Grade 3 Knob Locks, 70 Series

Designs

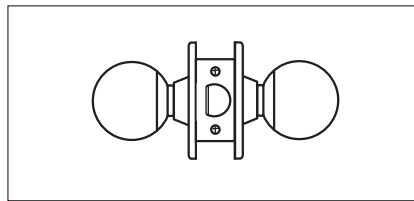


Functions



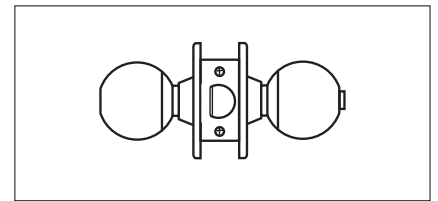
Entry

Turning inside button locks both knobs requiring use of key until button is manually unlocked.



Passage/Hall/Closet

Both knobs always retract the latch.



Privacy/Bed/Bath

Turning inside button locks both knobs until button is manually unlocked. Emergency tool can be used to unlock outside knob.

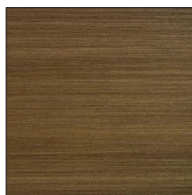
Grade 3 Knob Locks, 70 Series

Finishes

US3 / 505 / 605
Bright Brass



US5 / 609
Antique Brass



US32D / 630
Satin Stainless
Steel

