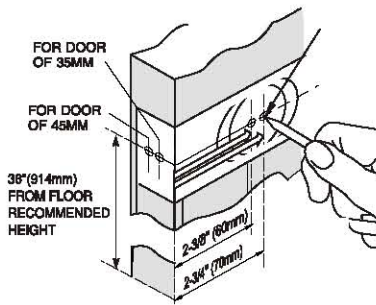


INSTRUCTION FOR INSTALLING LOCKSET

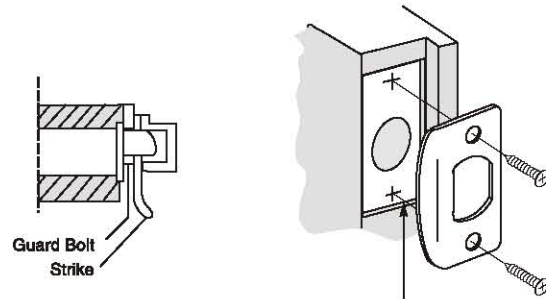
1. MARK DOOR



Place template on outside of door with height center line 36" from floor, Mark both holes as shown.

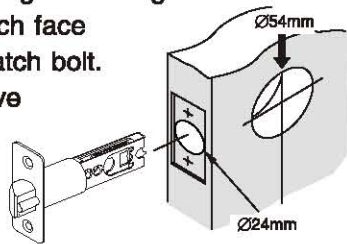
3. INSTALL STRIKE ON DOOR JAMB

Transfer the vertical center line and the height line to the jamb. Drill 1-1/16" (27mm) hole 7/8" (22mm) deep. Cut out jamb until flush and install strike, setting the screw hole on the center line.



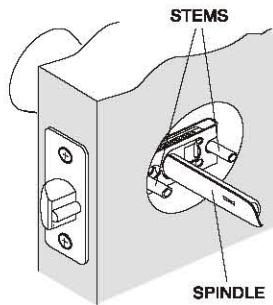
2. DRILL TWO HOLES

Drill a 2-1/8" (54mm) hole through face of door. Drill 1" (25mm) hole straight into edge of door. Mortise for latch face until flush and install latch bolt. On metal doors, remove latch faceplate and do not mortise door edge.



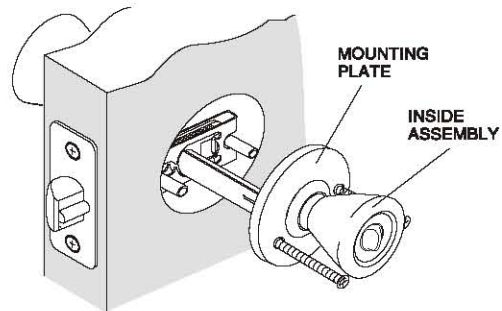
4. INSTALL OUTSIDE KNOB

Insert outside knob with spindle into latch, making certain that stems are positioned correctly through latch hole. Press flush against door. For easier insertion of spindle, depress latchbolt.



5. INSTALL INSIDE ASSEMBLY

Slip inside assembly over spindle and locking bar (Turnbutton must be in horizontal position to receive locking bar.) Insert screws through mounting plate and tighten evenly until snugly secured.



1 FOLD HERE ON DOOR EDGE

IMPORTANT!
PLACE TEMPLATE FOLD ON LOW EDGE OF DOOR BEVEL

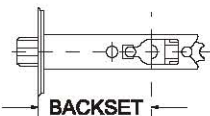
2 MARK CENTER OF 1-3/4" (45mm) THICK DOOR FOR 1" (25mm) HOLE
MARK CENTER OF 1-3/8" (35mm) THICK DOOR FOR 1" (25mm) HOLE

5 DRILL 1" (25mm) HOLE IN CENTER OF DOOR EDGE FOR LATCH

CAUTION!

Check backset required for lock before drilling 2-1/8" (54mm) hole.
Backset: Is length from center edge of door to center of 2-1/8" (54mm) hole.

2 3/4" BACKSET
2 3/8" BACKSET



3 MARK CENTER OF 2-1/8" (54mm) HOLE ON DOOR FACE

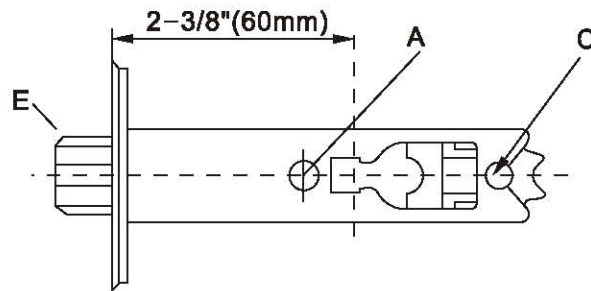
4 DRILL 2-1/8" (54mm) HOLE

TEMPLATE

Recommended centerline is 36" (914mm) from floor.

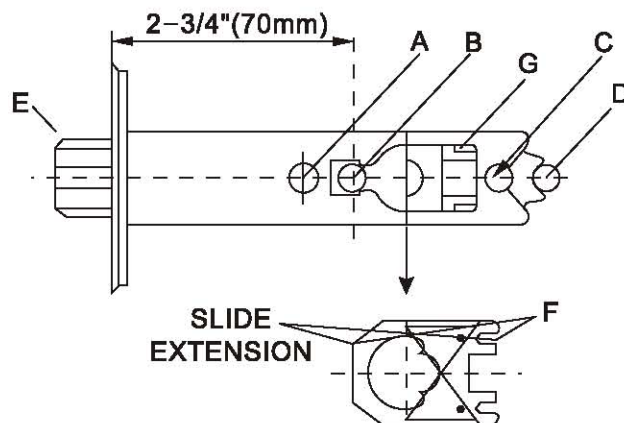
INSTRUCTIONS FOR HOW TO USE THE ADJUSTABLE LATCH

1. The latch is factory preset at 2-3/8"(60mm) backset, which is standard for most doors.
2. To use the 2-3/8"(60mm) backset, no adjustment is required, simply insert the screw stems on the outside knobs thru holes (A) & (C) of the latch, proceed to step 4 of the instructions for installing lockset.



FOR 2-3/4"(70mm) BACKSET INSTALLATION

1. Push in front of latch (E) and hold it.
2. The black slide extension must be removed from the latch. Use a screwdriver to push the black insert slide extension up or down from inside the latch. For best results, while keeping the latch depressed, push down on the top front (closest to E) of the extension slide, while at the same releasing the latch.
3. Latch is ready for installation.
4. When using the 2-3/4" backset, lockset screw stems are inserted through hole (B) of the latch and against the outside of location (D) on the latch. proceed to step 4 of the instructions for installing lockset.



Note: To reverse the adjustment from 2-3/4" (70mm) to 2-3/8" (60mm) re-install the black slide extension. If your lock came with a 6-way latch, you can select between a square corner, radius corner or "drive-in" configuration. To remove a faceplate, twist it 45 degrees and it will slide off.