

# Mortise Locks MLF Series



## Overview

LSDA mortise locks provide exceptional strength and durability to any door. Typically used in hospitals, schools and commercial buildings, they are well-suited to heavy use environments. Designed to fit standard Type 86 full-mortise cutouts, and equipped with a sectional trim or escutcheon trim, these locks are excellent for new projects and retrofit. The lever trim meets ADA standards for accessibility.

## Compliance

- ANSI/BHMA 156.13 2005 Series 1000, Grade 1
- Latch is UL Listed (USA and Canada) UBC 7-2-1997 for 3-hour fire doors, included

## Applications

- Offices
- Hospitals
- Schools
- Multi-Family Buildings
- Industrial Sites
- Public Buildings



R14024



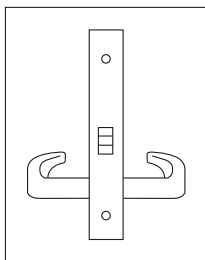
# Mortise Locks, MLF Series

## Standard Features:

<b>Latch</b>	2 <sup>3</sup> / <sub>4</sub> " Backset, 1" deadbolt projection and <sup>3</sup> / <sub>4</sub> " latch projection
<b>Handing</b>	Easily reversible without disassembly
<b>Materials</b>	Zinc, Brass and Steel
<b>Strike</b>	4 <sup>7</sup> / <sub>8</sub> " x 1 <sup>1</sup> / <sub>4</sub> "
<b>Door Prep</b>	Full Mortise Type 86, Escutcheons 2 <sup>1</sup> / <sub>2</sub> " x 8 <sup>1</sup> / <sub>4</sub> " with Jumbo T-Turn
<b>Door Thickness</b>	1 <sup>3</sup> / <sub>4</sub> "
<b>Keying</b>	Equipped with 1 <sup>1</sup> / <sub>4</sub> " SC4 mortise cylinder Accepts standard 1 <sup>1</sup> / <sub>4</sub> " mortise cylinders (see M1141 Mortise Cylinders by LSDA), including SFIC.

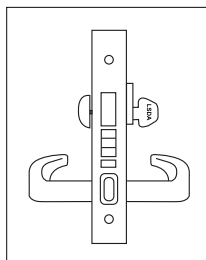
# Mortise Locks, MLF Series

## Functions



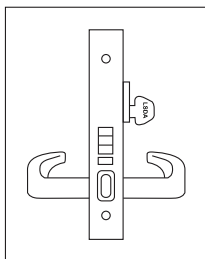
### Passage (F01)

Latch retracted by lever on either side



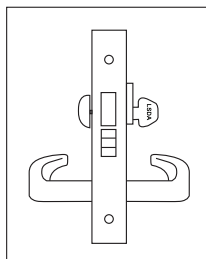
### Apartment/Dormitory (F12)

Latch is retracted by either lever unless outside lever is locked by rocker. In addition, a deadbolt can be projected or retracted by key outside or thumbturn inside. Also, operating inside lever retracts both latch and deadbolt.



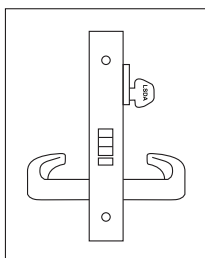
### Entrance (F04)

Lock or unlock outside lever using rocker on edge of lock. When locked, inside lever retracts latch, outside access by key.



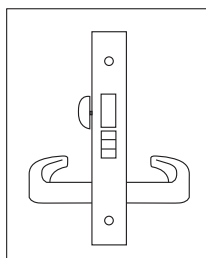
### Dormitory/Exit (F13)

Both levers always retract latch. Deadbolt can be projected and retracted by key outside or thumbturn inside. Also, operating inside lever retracts latch and deadbolt.



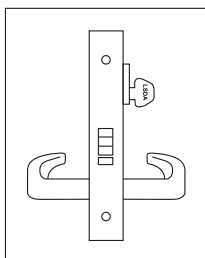
### Classroom (F05)

Lock or unlock by key from outside of the door. When locked, inside lever retracts latch, outside access by key.



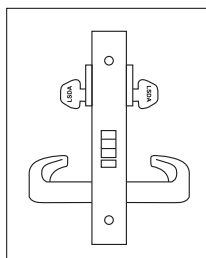
### Privacy (F19)

Both levers always retract latch. Deadbolt can be projected and retracted by thumbturn inside or emergency release outside. Also, operating inside lever retracts latch and deadbolt.



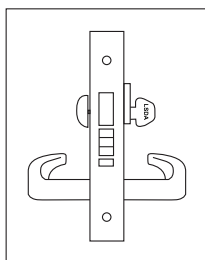
### Storeroom (F07)

Inside lever always retracts latch. Outside lever never retracts latch, outside key retracts latch.



### Classroom Intruder (F32)

Latch is retracted by either lever, unless outside lever is locked by key from either inside or outside. Inside lever always retracts latch.

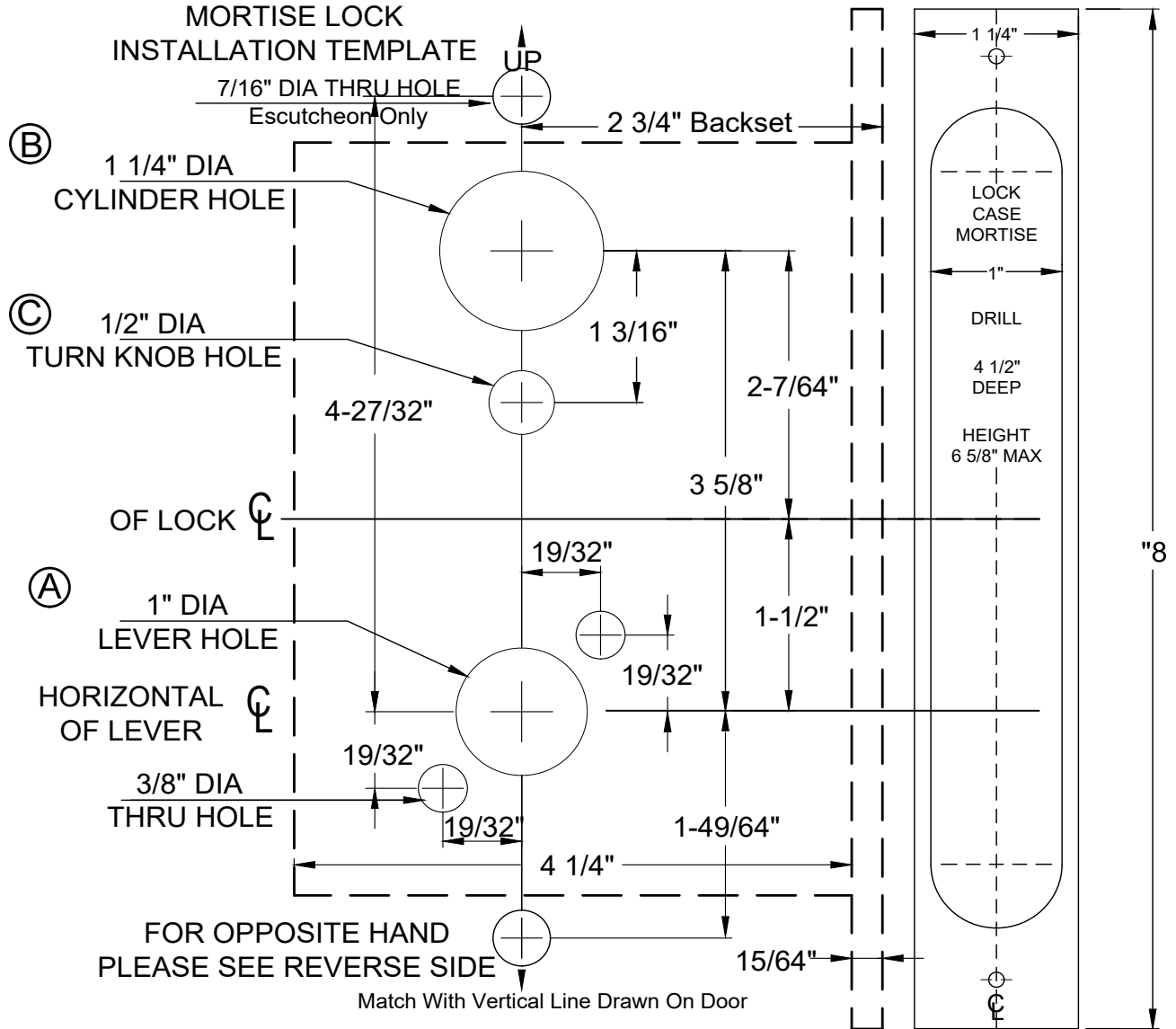


### Storeroom with Deadbolt (F48)

Inside lever always retracts latch, and deadbolt if it is extended. Outside lever is rigid, outside cylinder retracts latch, and deadbolt if it is extended. Deadbolt is extended or retracted by inside thumbturn or by outside cylinder.

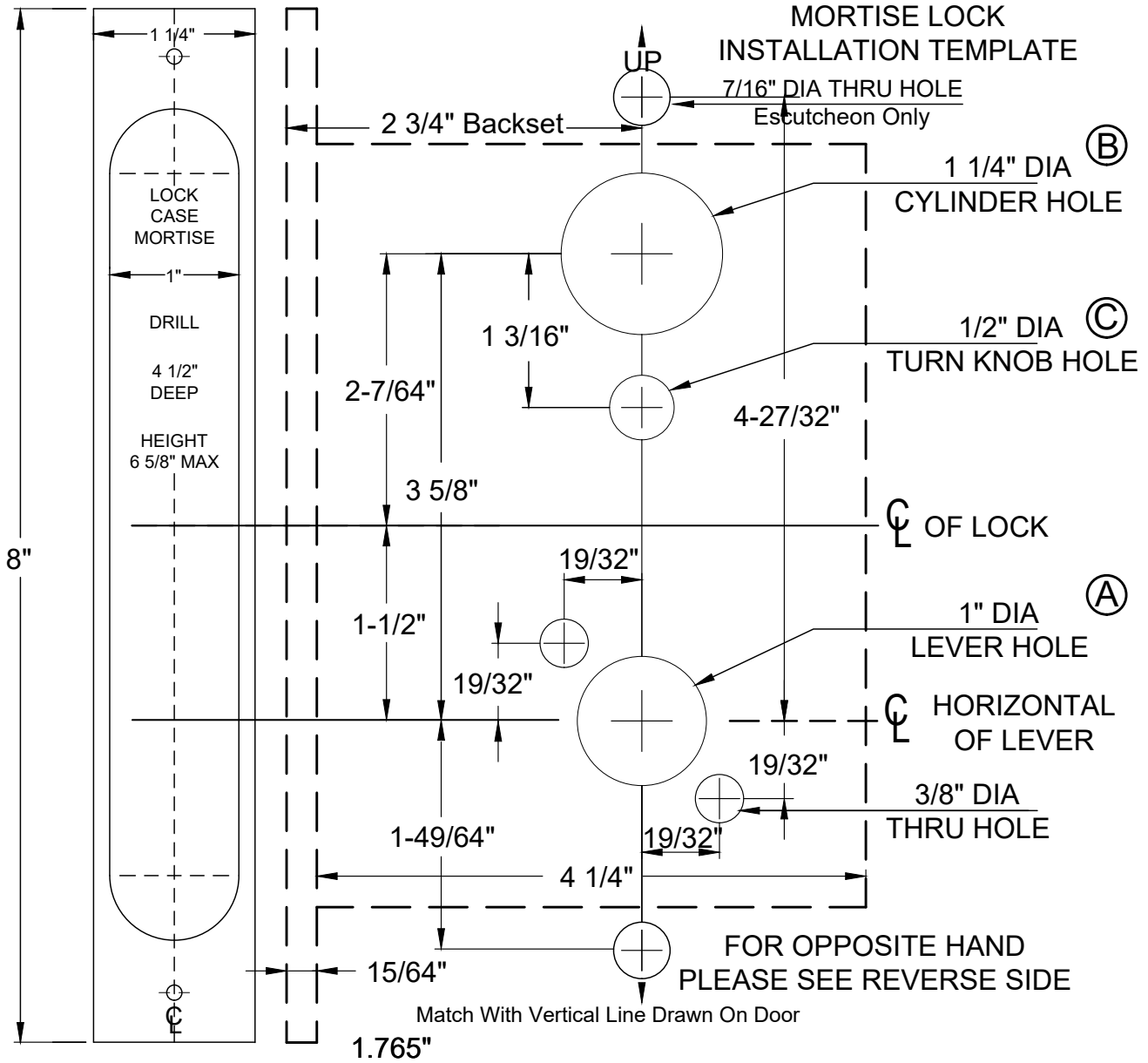
# Mortise Locks, MLF Series

## Dimensions, Left Hand / Left Hand Reverse



# Mortise Locks, MLF Series

## Dimensions, Right Hand / Right Hand Reverse



# Mortise Locks, MLF Series

## How to Change Handing

For all boxes (Figure 1)

- 1) Use hex key to unfasten the screw in the hole behind latchbolt (green label)
- 2) Pull latchbolt out until it is entirely away from lock case.
- 3) Rotate latchbolt to adjust handing.
- 4) Fasten the screw tightly into the hole and glue with Threadlocker (Loctite 242).

Additional Steps for Split-Hub Boxes (Figure 2)

- 5) Use blade screwdriver to push down locking piece (green label) to other side.
- 6) Handing is completely reversed.

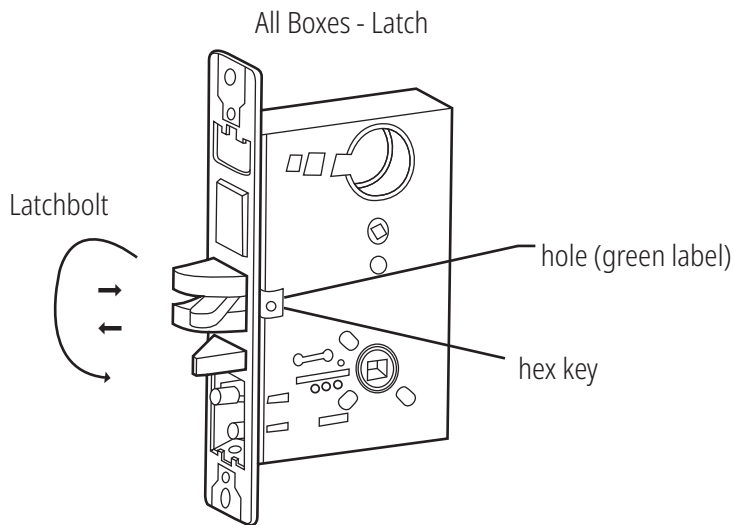


Figure 1

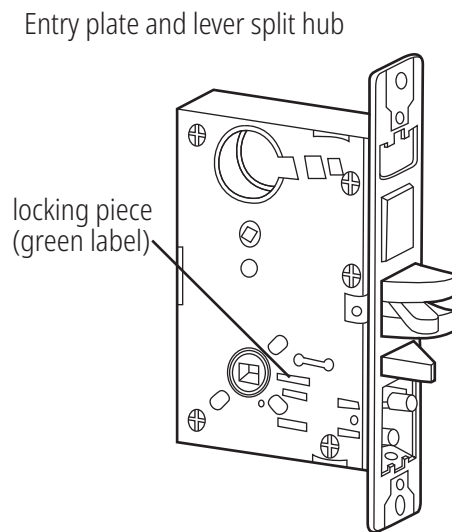


Figure 2

# Mortise Locks, MLF Series

## How to Order

### Ann Arbor (AA)

Mfr.#	Desc.	EZ#
<b>MLF01AA26D</b>	Passage	<b>105084</b>
<b>MLF04AA26D</b>	Entry, SC4 Keyway	<b>105086</b>
<b>MLF05AA26D</b>	Classroom, SC4 Keyway	<b>105087</b>
<b>MLF07AA26D</b>	Storeroom, SC4 Keyway	<b>105088</b>
<b>MLF12AA26D</b>	Apt/Dorm with Rocker, SC4 Keyway	<b>105089</b>
<b>MLF13AA26D</b>	Apt/Dorm without Rocker, SC4 Keyway	<b>105090</b>
<b>MLF19AA26D</b>	Privacy	<b>105085</b>
<b>MLF48AA26D</b>	Storeroom w/Deadbolt, SC4 Keyway	<b>108230</b>

## Designs



Ann Arbor (AA)  
Shown in 26D Finish

*\* Locksets that secure both sides of the door are controlled by building codes and the Life Safety Code. In an emergency exit situation, failure to quickly unlock the inside knob could be hazardous or even fatal.*

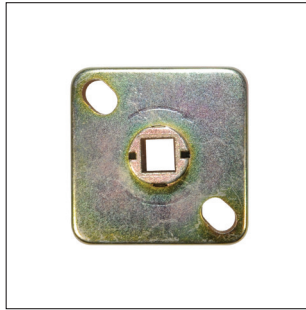
# Mortise Locks, MLF Series

## Parts and Accessories



### MLF SPINDLE KIT

- Spindle Kit
- 1¾" door thickness



### MLF SPRING CAGE

- Replacement Spring Cage



### MLDBCAM

- Cam for MLF Series Keyed Locks

Mfr.#	EZ#
MLF SPINDLE KIT	105083

Mfr.#	EZ#
MLF SPRING CAGE	105082

Mfr.#	EZ#
MLDBCAM	105138

## Finishes

