

Mortise Locks MLF Series



Overview

LSDA mortise locks provide exceptional strength and durability to any door. Typically used in hospitals, schools and commercial buildings, they are well-suited to heavy use environments. Designed to fit standard Type 86 full-mortise cutouts, and equipped with a sectional trim or escutcheon trim, these locks are excellent for new projects and retrofit. The lever trim meets ADA standards for accessibility.

Compliance

- ANSI/BHMA 156.13 2005 Series 1000, Grade 1
- Latch is UL Listed (USA and Canada) UBC 7-2-1997 for 3-hour fire doors, included

Applications

- Offices
- Hospitals
- Schools
- Multi-Family Buildings
- Industrial Sites
- Public Buildings



R14024



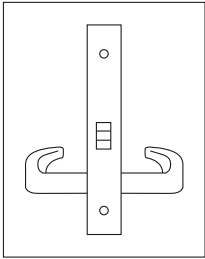
Mortise Locks, MLF Series

Standard Features:

Latch	2 ³ / ₄ " Backset, 1" deadbolt projection and ³ / ₄ " latch projection
Handing	Easily reversible without disassembly
Materials	Zinc, Brass and Steel
Strike	4 ⁷ / ₈ " x 1 ¹ / ₄ "
Door Prep	Full Mortise Type 86, Escutcheons 2 ¹ / ₂ " x 8 ¹ / ₄ " with Jumbo T-Turn
Door Thickness	1 ³ / ₄ "
Keying	Equipped with 1 ¹ / ₄ " SC4 mortise cylinder Accepts standard 1 ¹ / ₄ " mortise cylinders (see M1141 Mortise Cylinders by LSDA), including SFIC.
Voltage	24V DC model offers a maximum current of 350mA Request to Exit (REX) models include a circuit for connection to an access control panel
Fail Safe/Secure	Fail Secure, remaining locked during power outage

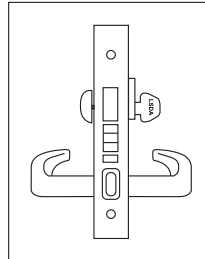
Mortise Locks, MLF Series

Functions



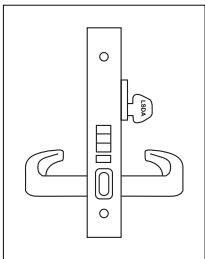
Passage (F01)

Latch retracted by lever on either side



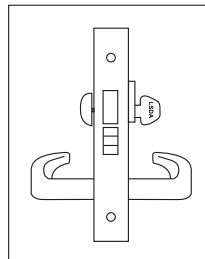
Apartment/Dormitory (F12)

Latch is retracted by either lever unless outside lever is locked by rocker. In addition, a deadbolt can be projected or retracted by key outside or thumbturn inside. Also, operating inside lever retracts both latch and deadbolt.



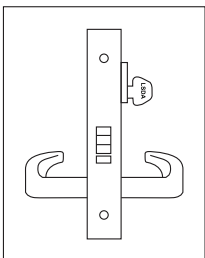
Entrance (F04)

Lock or unlock outside lever using rocker on edge of lock. When locked, inside lever retracts latch, outside access by key.



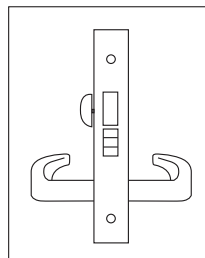
Dormitory/Exit (F13)

Both levers always retract latch. Deadbolt can be projected and retracted by key outside or thumbturn inside. Also, operating inside lever retracts latch and deadbolt.



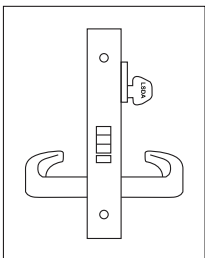
Classroom (F05)

Lock or unlock by key from outside of the door. When locked, inside lever retracts latch, outside access by key.



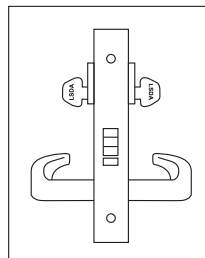
Privacy (F19)

Both levers always retract latch. Deadbolt can be projected and retracted by thumbturn inside or emergency release outside. Also, operating inside lever retracts latch and deadbolt.



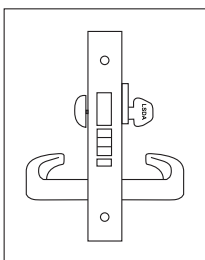
Storeroom (F07)

Inside lever always retracts latch. Outside lever never retracts latch, outside key retracts latch.



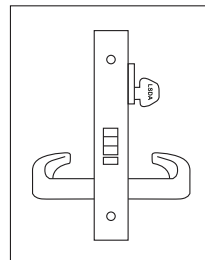
Classroom Intruder (F32)

Latch is retracted by either lever, unless outside lever is locked by key from either inside or outside. Inside lever always retracts latch.



Storeroom with Deadbolt (F48)

Inside lever always retracts latch, and deadbolt if it is extended. Outside lever is rigid, outside cylinder retracts latch, and deadbolt if it is extended. Deadbolt is extended or retracted by inside thumbturn or by outside cylinder.

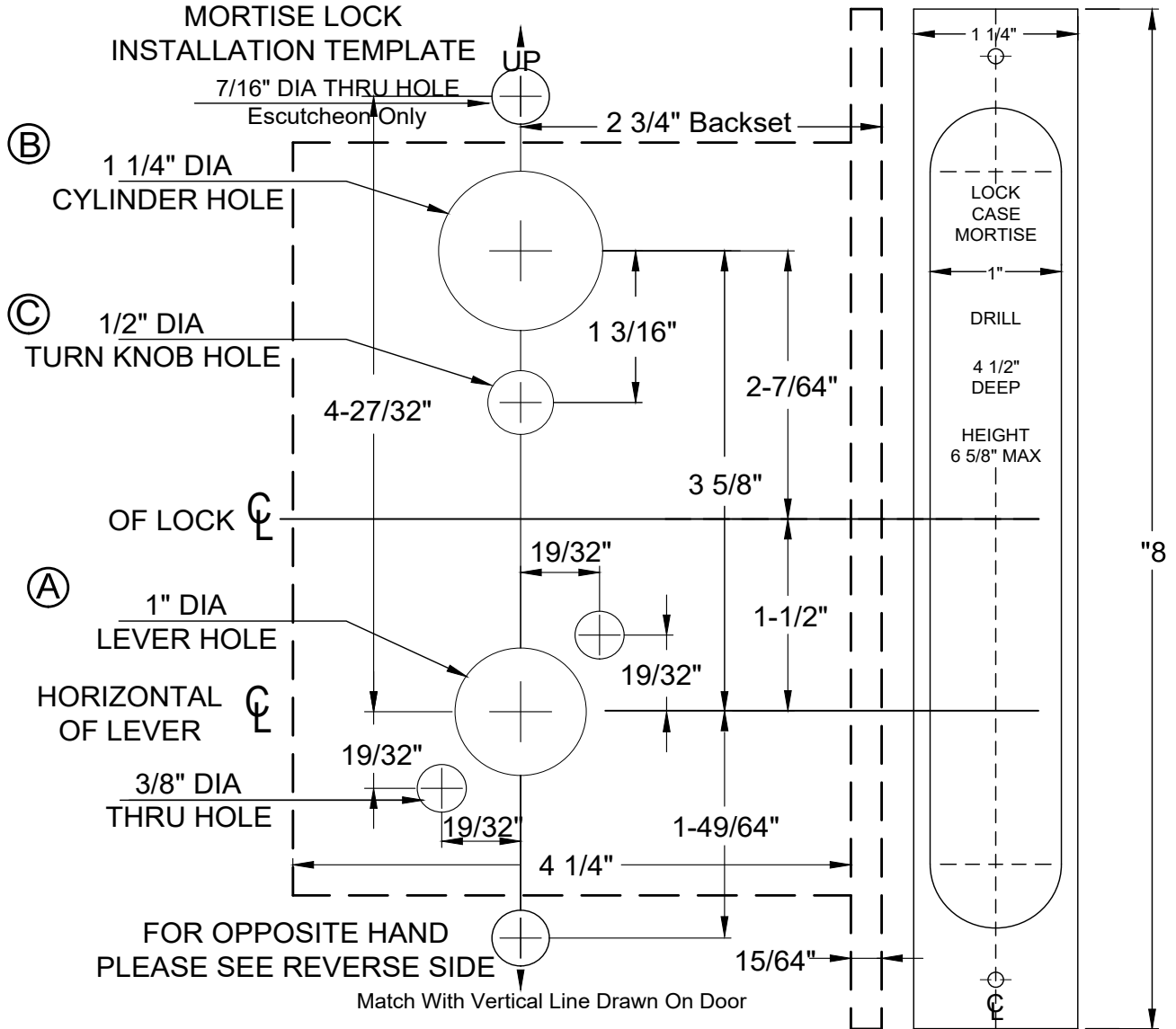


Electrically Unlocked Storeroom (F07)

Inside lever always retracts latch. Outside lever only retracts latch when power is applied. Outside key can also retract latch.

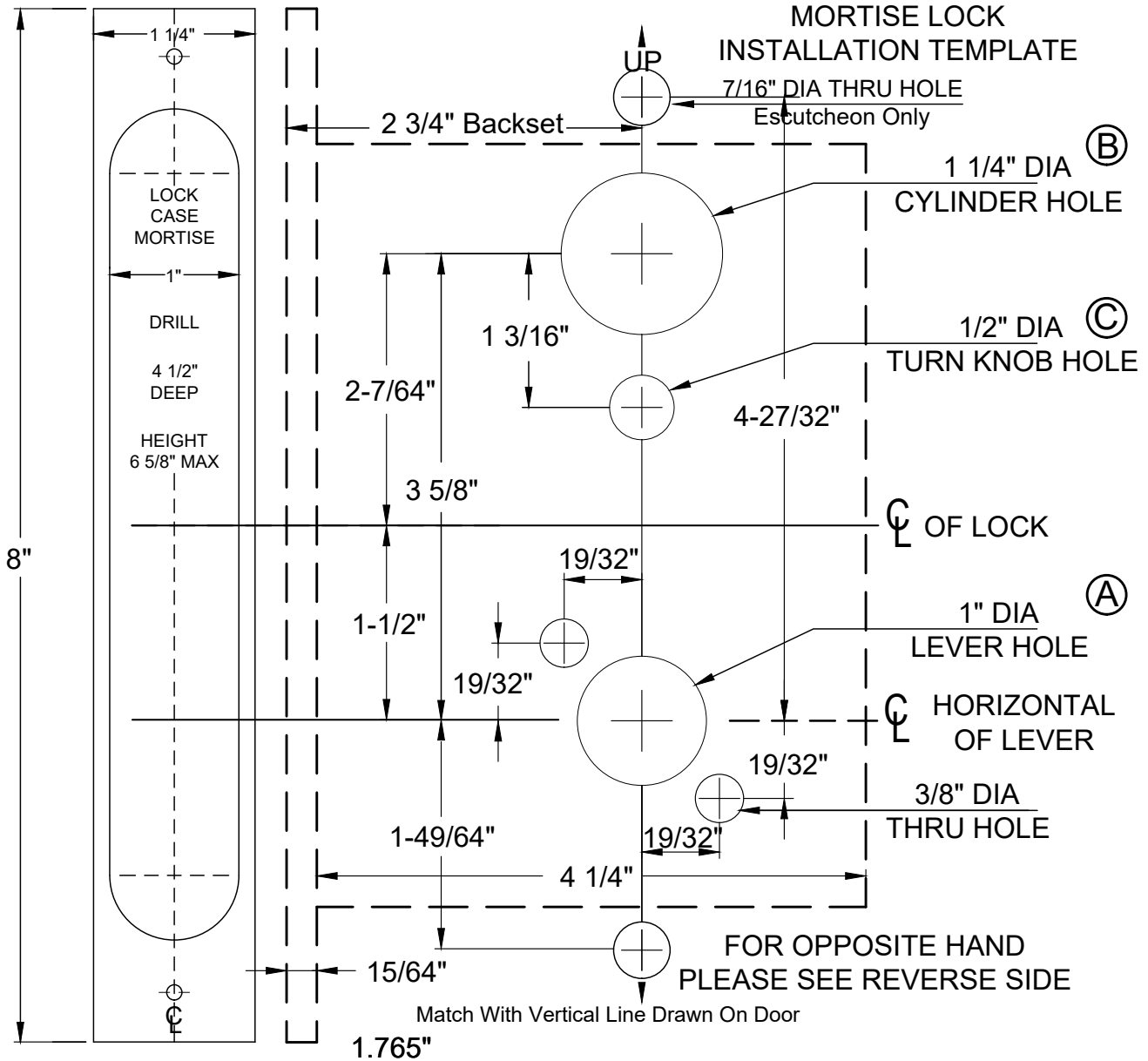
Mortise Locks, MLF Series

Dimensions, Left Hand / Left Hand Reverse



Mortise Locks, MLF Series

Dimensions, Right Hand / Right Hand Reverse



Mortise Locks, MLF Series

How to Change Handing

For all boxes (Figure 1)

- 1) Use hex key to unfasten the screw in the hole behind latchbolt (green label)
- 2) Pull latchbolt out until it is entirely away from lock case.
- 3) Rotate latchbolt to adjust handing.
- 4) Fasten the screw tightly into the hole and glue with Threadlocker (Loctite 242).

Additional Steps for Split-Hub Boxes (Figure 2)

- 5) Use blade screwdriver to push down locking piece (green label) to other side.
- 6) Handing is completely reversed.

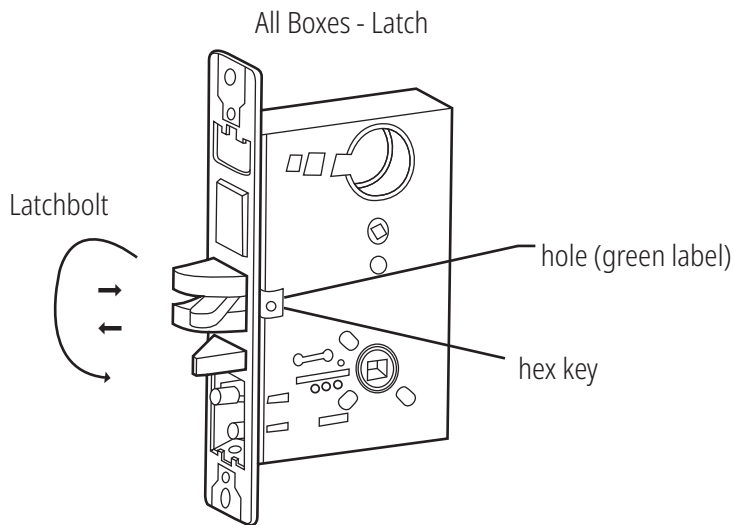


Figure 1

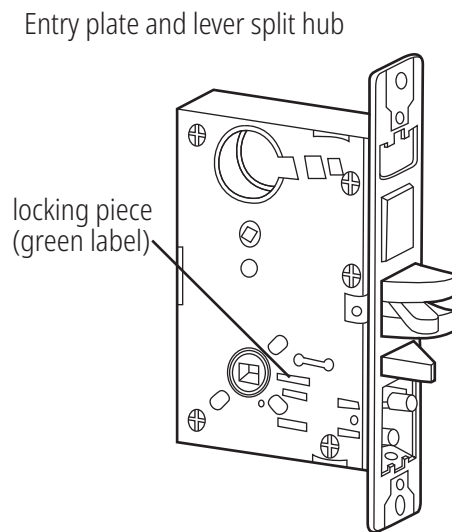


Figure 2

Mortise Locks, MLF Series

How to Order

Ann Arbor (AA)

Mfr.#	Desc.	EZ#
MLF01AA26D	Passage	105084
MLF01AA10B	Passage	183402
MLF04AA26D	Entry, SC4 Keyway	105086
MLF04AA10B	Entry, SC4 Keyway	183403
MLF05AA26D	Classroom, SC4 Keyway	105087
MLF05AA10B	Classroom, SC4 Keyway	183404
MLF07AA26D	Storeroom, SC4 Keyway	105088
MLF07AA10B	Storeroom, SC4 Keyway	183405
MLF12AA26D	Apt/Dorm with Rocker, SC4 Keyway	105089
MLF12AA10B	Apt/Dorm with Rocker, SC4 Keyway	183406
MLF13AA26D	Apt/Dorm without Rocker, SC4 Keyway	105090
MLF13AA10B	Apt/Dorm without Rocker, SC4 Keyway	183407
MLF19AA26D	Privacy	105085
MLF19AA10B	Privacy	183408
MLF48AA26D	Storeroom w/Deadbolt, SC4 Keyway	108230
MLF32AA26D	Classroom Intruder, Without Deadbolt, SC4 Keyway	106728

Ann Arbor (AA), Electrically Unlocked Storeroom

Mfr.#	Desc.	EZ#
MLF07EU24REX AA26D	24V DC, REX	182494

Savannah(SA)

Mfr.#	Desc.	EZ#
MLF01SA26D	Passage	181288
MLF04SA26D	Entry, SC4 Keyway	181286
MLF07SA26D	Storeroom, SC4 Keyway	181285
MLF05SA26D	Classroom, SC4 Keyway	181287
MLF12SA26D	Apt/Dorm with Rocker, SC4 Keyway	181283
MLF13SA26D	Apt/Dorm without Rocker, SC4 Keyway	181284
MLF19SA26D	Privacy	181289
MLF48SA26D	Storeroom w/Deadbolt, SC4 Keyway	181290
MLF32SA26D	Classroom Intruder, Without Deadbolt, SC4 Keyway	181291

Designs



Ann Arbor (AA)
Shown in 26D Finish



Savannah (SA)
Shown in 26D Finish

* Locksets that secure both sides of the door are controlled by building codes and the Life Safety Code. In an emergency exit situation, failure to quickly unlock the inside knob could be hazardous or even fatal.

Mortise Locks, MLF Series

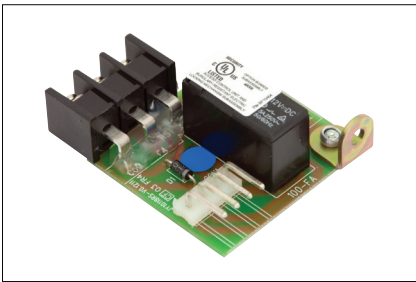
Parts & Accessories, Electrified



Mfr.# EZ#
PDPS12/24 **107045**

PDPS12/24

- Takes 110V AC current (wall unit outlet) and converts it to either 12V or 24V DC current
- Battery backup has two hours backup power at full load during an A.C. power failure. Batteries will automatically recharge when failed power is restored.
- Works with electric exit devices, or with virtually any mag lock, electric strike, electric lever lock, etc.
- The power supply can control up to (4) delayed egress exit devices.
- Circuit breaks provide protection for the motherboard
- Restoring power is field selectable for automatic or manual.
- The PDPS12/24 must be ordered with the PD2ZONE Controller for the proper installation of a PD9200 Electrified Exit Device
- Up to two (2) PD9200 Electrified Exit Devices can be powered from one (1) PDPS12/24 with one (1) PD2ZONE installed
- Standard input options are 120V AC, 1.0 Amp or 240V AC, 0.5 Amp
- Output power is 24V DC, 2 Amp or 12V DC, 2 Amp
- Constructed of heavy 20 gauge steel.
- Dimensions: 10"H x 12½" W x 5"D.



PDFA

- Fire Alarm Interface for PDPS Power Supply, consists of one circuit board that plugs onto the PDPS12/24 Power Supply
- In the event a fire alarm is active, this board will remove power from PDPS12/24 output and any logic board output. The Fire Alarm Board can be configured for Automatic or Manual reset.

Mfr.# EZ#
PDFA **107048**



PDEPT

- Power Transfer
- Connects Wires from Door Frame to the Hinge Side of the Door
- Accepts up to ¾" diameter wire bundle
- Accommodates doors that swing up to 120°

Mfr.# EZ#
PDEPT **107044**



PDBB

- Battery Backup, batteries & charger for PDPS Power Supply
- Input from battery: 12/24V DC, at 2 Amps
- Output: 12V DC: 13.8VDC, 0.23A; 24V DC: 28V, 0.23A
- Battery backup time is 2 hours at 100% load

Mfr.# EZ#
PDBB **107047**

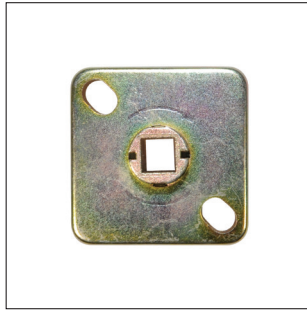
Mortise Locks, MLF Series

Parts and Accessories



MLF SPINDLE KIT

- Spindle Kit
- 1¾" door thickness



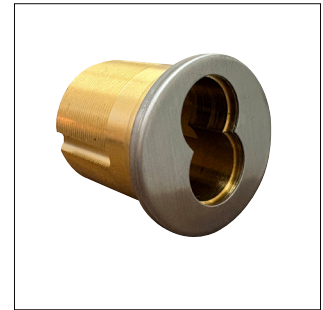
MLF SPRING CAGE

- Replacement Spring Cage



MLDBCAM

- Cam for MLF Series Keyed Locks



CIC138

- Mortise Cylinder Housing, non-removable cam
- 1¾" SFIC 7-Pin for MLF12 (Apartment/Dormitory), MLF13 (Dormitory/Exit), and MLF48 (Storeroom) Functions
- Finish: US32D, US10B

Mfr.#	EZ#
MLF SPINDLE KIT	105083

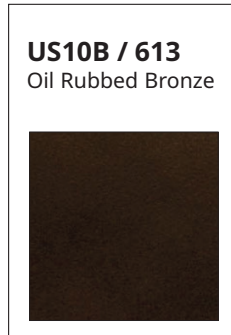
Mfr.#	EZ#
MLF SPRING CAGE	105082

Mfr.#	EZ#
MLDBCAM	105138

Mfr.#	EZ#
CIC138 32D	107036
CIC138 10B	187351

Mortise Locks, MLF Series

Finishes



Handing

