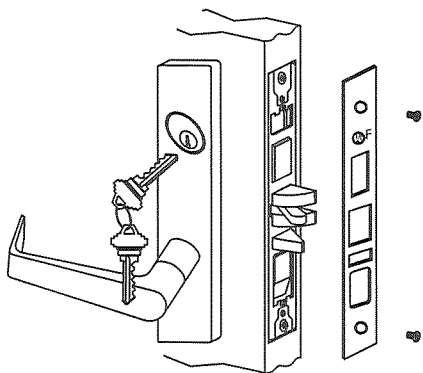


Inside Lever

1. Insert spindle into hub of lock case.
2. Place spring cage with arrows pointing in direction of lever rotation and mounting plate (spring-mount assembly) onto lock case and fasten with screws.
3. Cap inside rose over spring-mount assembly.
4. Insert inside spring into lever hole and tighten inside lever bushing with spanner wrench.
5. Insert turn piece assembly and fasten with screws.

Front Plate

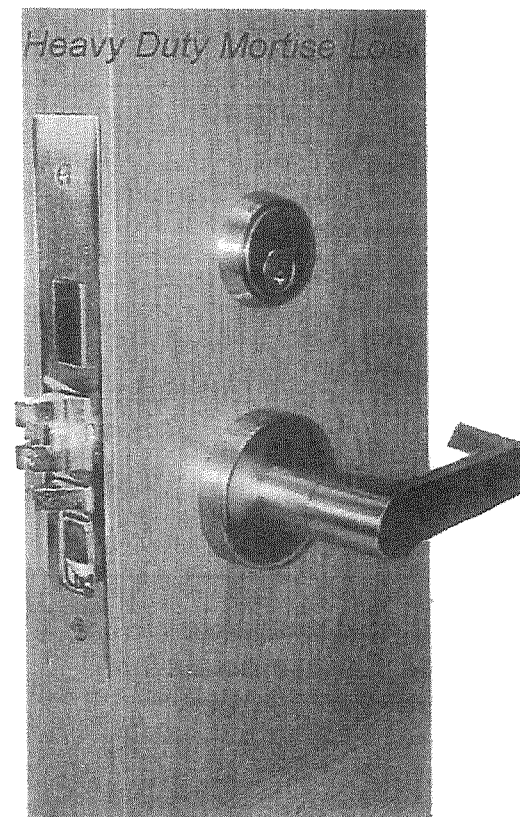
1. Install outside front plate onto lockcase front and then fasten with screws.



M Series



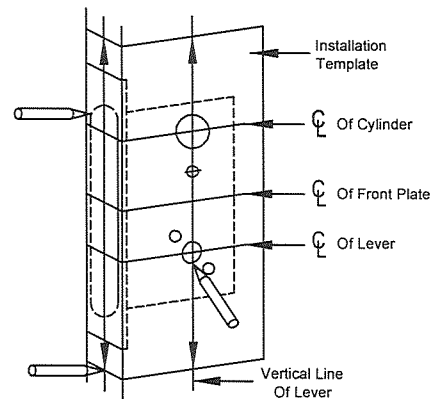
HEAVY DUTY MORTISE LOCK



INSTALLATION GUIDE

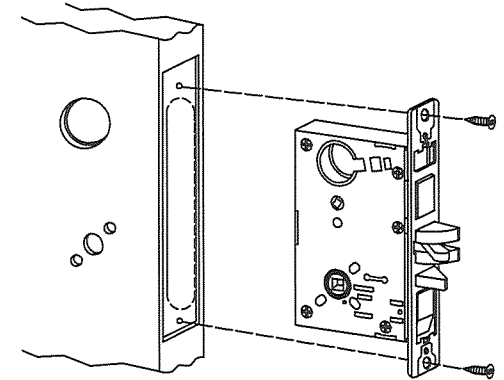
Door Preparation

1. Align door preparation template on edge of door with applicable lines. Check door preparation chart and mark only holes for lock function being installed.
2. Mortise door edge according to measurements of installation template and drill proper holes for trims.



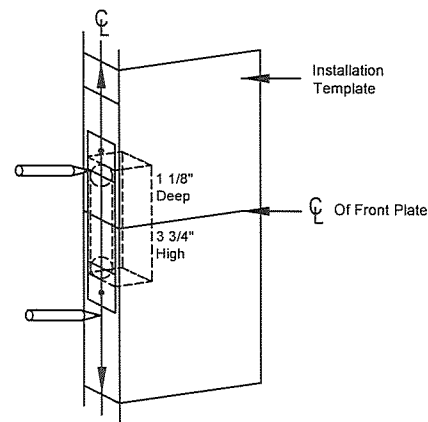
Lockcase Installation

1. Insert lockcase into mortise cut-out & fasten screws to door.



Strike Preparation

1. Align strike template on jamb according to measurements of strike installation template. Bore 1" diameter holes into door edge, 1 1/8" deep. Recess 5/32" for fit of strike and box.



Outside Lever

1. Place spring cage onto outside lever assembly with arrows pointing in direction of lever rotation. Insert spindle into hub of lock case.
2. Position outside lever assembly into post holes of lock case.

2. Mortise jamb according to measurements of installation template. Then fit strike and dust box into frame and secure into place with screws.

