

Exit Devices

DOGGING EXIT DEVICE USING DOGGING PIN: Fully depress Cross Bar and hold, push up Dogging Pin with screwdriver and rotate 90° in either direction. **TO RELEASE EXIT DEVICE:** Hold Cross Bar down and rotate Dogging Pin with screwdriver in either direction until Dogging Pin releases.

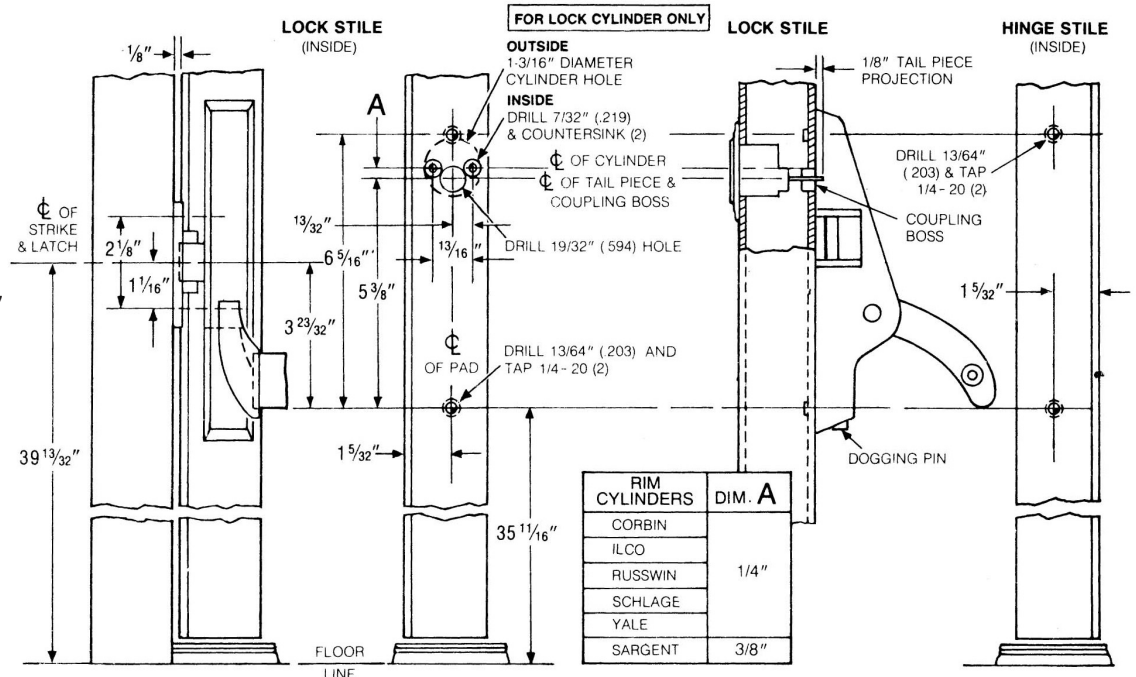
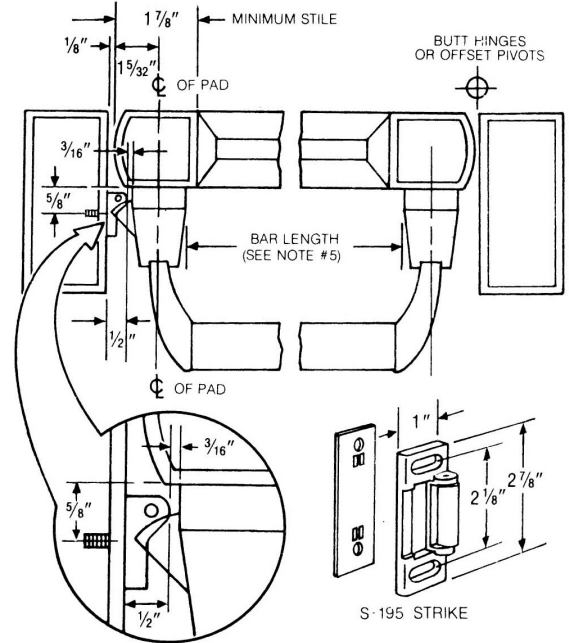
DOGGING EXIT DEVICE USING CYLINDER KEY: Turn Key forward hinge side approximately 360°. **TO RELEASE EXIT DEVICE:** Turn Key toward latch side approximately 360°.

1000 Series, 1062 Installation Instructions

Preparation

- Determine hand of door and prepare inside of lock and hinge stiles as shown.
- If Cylinder Key Lock is to be used, prepare inside and outside of lock stile as shown.
 - Cut Spindle of Rim Cylinder to project thru the door 1/8". Install Rim Cylinder and secure with (2) 12-24x1 1/8" Machine Screws. NOTE: Screw heads must be flush.
 - Determine Function of Key Cylinder:
 - STANDARD:** Key removable in either locked or unlocked position. With Latch fully released, rotate Coupling Boss so index mark is up.
 - NIGHT LATCH:** Key removable in locked position only with latch fully released, rotate Coupling Boss 90° towards hinge side.
- Install (2) 1/4-20 Shoulder Studs on lock stile and position Exit Latch Pad over Studs and insert Cylinder Spindle into Coupling Boss. Place Pad over Studs and tighten 3 Socket Head Set Screws to secure in place.
- Install (2) 1/4-20 Shoulder Studs on hinge stile and place other Exit Pad over Studs and tighten 3 Socket Head Set Screws to secure in place.
- Measure distance from inside edge to inside edge of Exit Pads for proper Cross Bar length. Cut Cross Bar. CAUTION: Cross Bar length must be with ± 1/32" for unit to function properly.
- Loosen 3 Set Screws on hinge stile Exit Pad and install Cross Bar using (2) 1/4-20 x 1" Oval Head Self-threading Screws. Tighten 3 Set Screws to secure in place.
- Prepare lock jamb for Strike as shown and install using (2) #10 x 1/2" Flat Head Self-threading Screws or #10 x 1 1/4" All-Purpose Screws.

LHRB Door Shown

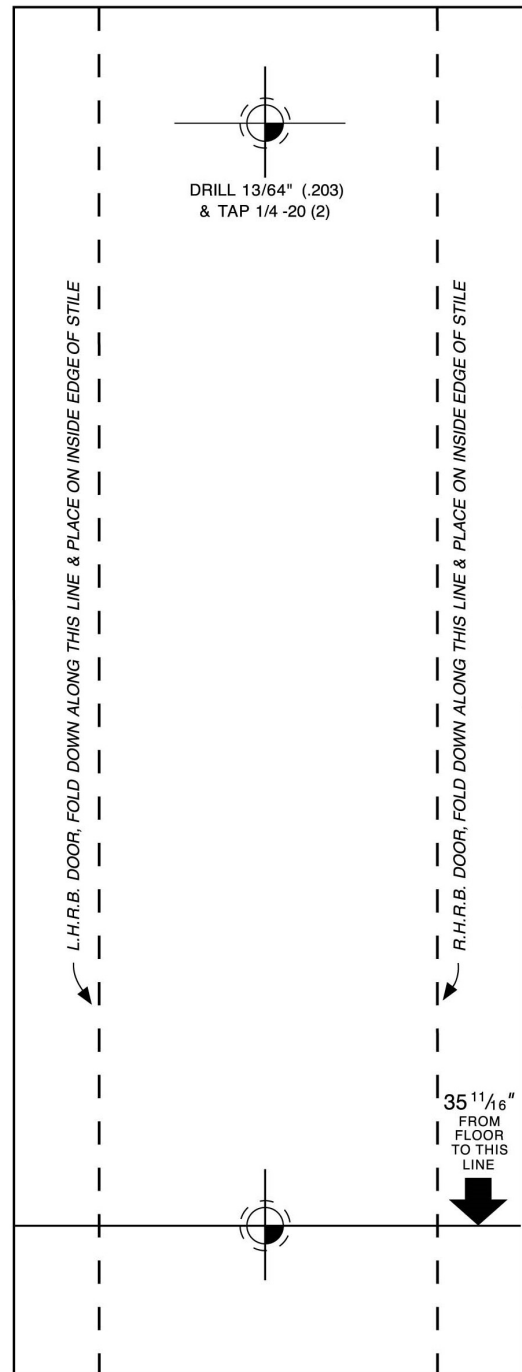


Exit Devices

1000 Series, 1062 Installation Instructions

NOTE: TEMPLATE IS NOT TO SCALE

HINGE STILE INSIDE FACE



Exit Devices

1000 Series, 1062 Installation Instructions

NOTE: TEMPLATE IS NOT TO SCALE

LOCK STILE INSIDE FACE

