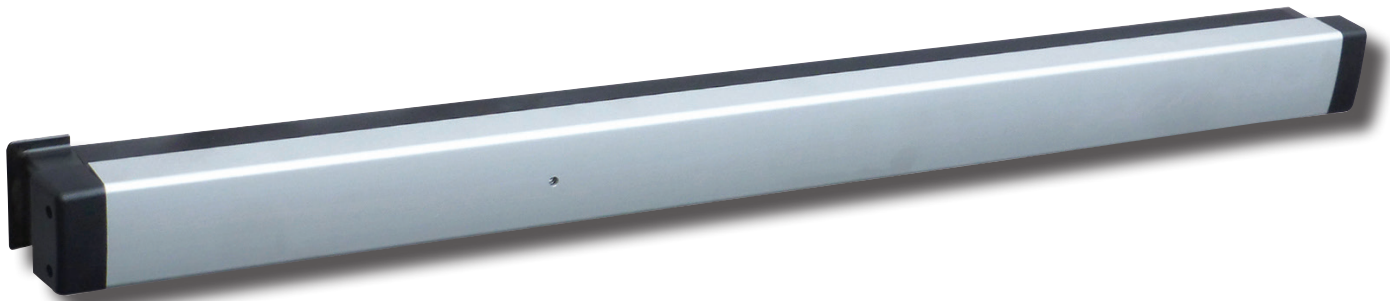


Grade 1 Exit Devices PD800 Series



Overview

Designed for narrow stile aluminum and glass doors, this exit device has a sleek appearance and a secure rotating latch mechanism. They are stocked in two finishes and in widths to fit 36" and 42" single doors. These devices are recommended for use on exterior and interior out-swing doors.

Compliance

- Investigated to ANSI/BHMA A156.3-2014 requirements for Grade 1, UL 305

Applications

- Stores
- Office Parks
- Restaurants
- Retail Spaces



SA13166

Grade 1 Exit Devices, PD800 Series

Standard Features

Latch	Interlocking latch and strike. When the door closes, the interlocking noseguard and bolt close around the strike. The deadlocking slide springs over, locking the bolt to the strike. When push bar is depressed, the deadlocking slide moves back, allowing the door to unlock from the strike. This unique interlock provides solid security and prevents jamb spreading.
Device Lengths	36" wide doors (can be cut back to 30") 42" wide doors (can be cut back to 36")
Handing	Non-Handed
Material	Push bar is extruded aluminum.
Strike	Mounted on door jamb.
Door Types	Aluminum and glass storefront doors.
Door Prep	Installed on hollow aluminum door with vertical rods inside the hollow stile.
Dogging	Hex Key
Door Thickness	1¾" - 2¼"
Stile Width	Minimum 2" wide stile
Projection	Pushbar Neutral: 2⅝" Pushbar Dogged: 1⅝"
Keying	Installation of standard 1⅝" rim cylinder when exterior access is required

Designs

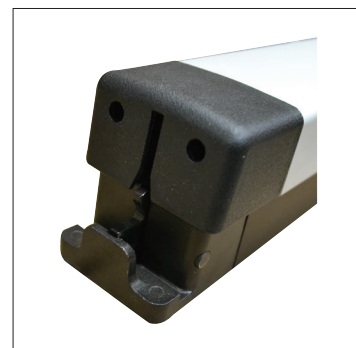


PD880 Rim Exit Device
Shown in Aluminum Finish



PD860 Concealed Vertical Rod Exit Device
Shown in Aluminum Finish

Latch



Grade 1 Exit Devices, PD800 Series

How to Order

Narrow Stile

Mfr.#	Desc.	EZ#
PD880AL36	Rim, 36", Aluminum	183465
PD880DU36	Rim, 36", Duronodic	183466
PD880BLK36	Rim, 36", Black	183575
PD880AL42	Rim, 42", Aluminum	183467
PD880DU42	Rim, 42", Duronodic	183468
PD880BLK42	Rim, 42", Black	183576

Concealed Vertical Rod

Mfr.#	Desc.	EZ#
PD860AL36	Concealed Vert. Rod, 36", AL	183965
PD860DU36	Concealed Vert. Rod, 36", DU	183966
PD860BLK36	Concealed Vert. Rod, 36", Black	183967
PD860AL42	Concealed Vert. Rod, 42", AL	183968
PD860DU42	Concealed Vert. Rod, 42", DU	183969
PD860BLK42	Concealed Vert. Rod, 42", Black	183970

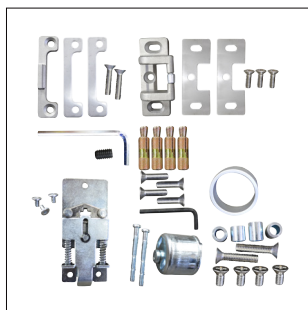
Mullions



Mfr.#	EZ#	Mfr.#	EZ#
FRKRM7USP	183671	FRKRM7BLK	185908
FRKRM8USP	183672	FRKRM8BLK	185909

FRKRM

- Mullions, 7' or 8'
- Rim Cylinder: Use a 1¼" solid brass 6-pin rim cylinder, sold separately
- Top Bracket: Stainless steel, using key allows the mullion to be removed in seconds. Mullion can be locked in top bracket easily without using the key.
- Bottom Bracket: Stainless steel, fixed by 4 hex bolts with stainless steel anchors
- Shims: ½" and ⅝" shims included
- Strike: Uses two sets of Rim Mullion Fire Strikes and Fire Strike Hooks, included
- Fasteners: Includes:
 - Set of Flat Head Machine Screws, #⅝-18x1½" with 2 pieces
 - Set of Flat Head Machine Screws, #⅝-18x⅝" with 4 pieces
 - Set of Hex Head Machine Screws, #⅝-18x1¼" with 4 pieces
 - Set of Expansion Anchors ½" Dia x 1½" Long with 4 pieces, Steel
- Mullions sold complete with Brackets, Strikes, Screws, Shims, and Expansion Anchors
- Finish: Prime Clear Coat (USP) or Matte Black Coated (BLK)



MULLION PARTS KIT

- Replacement Screw Pack and Parts Kit for Mullions

Mfr.#	EZ#
FRKRM PARTS KIT	186093



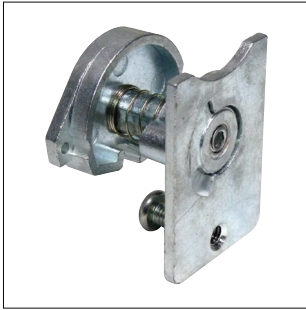
MULLION BRACKETS

- Replacement Top & Bottom Brackets for Mullions, Sold Less Screws

Mfr.#	EZ#
FRKM KBA23-0132-01	186621

Grade 1 Exit Devices, PD800 Series

Accessories



PD88DA
• Dog Assembly for PD880

Mfr.#	EZ#
PD88DA	183572



PD88SP L
• Large Strike Plate for PD880

Mfr.#	EZ#
PD88SP L	183573



PD88SP S
• Small Strike for PD860

Mfr.#	EZ#
PD88SP S	183973



PD88EC
• End Cap Set for PD880

Mfr.#	EZ#
PD88EC	183574



PD86TOPSTRIKE
• Top Strike for PD860

Mfr.#	EZ#
PD86TOPSTRIKE	183971



PD86TOPLATCH
• Top Latch for PD860

Mfr.#	EZ#
PD86TOPLATCH	183972

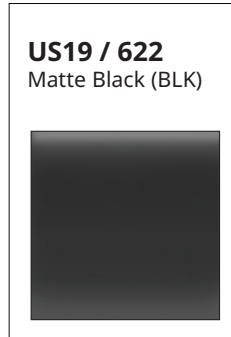
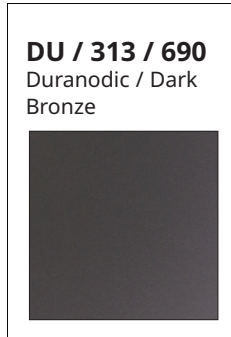


PD86BOTTOMLATCH
• Bottom Latch for PD860

Mfr.#	EZ#
PD86BOTTOMLATCH	183974

Grade 1 Exit Devices, PD800 Series

Finishes



Handing

