

Grade 1 Exit Devices PD800 Series



Overview

Designed for narrow stile aluminum and glass doors, this exit device has a sleek appearance and a secure rotating latch mechanism. They are stocked in two finishes and in widths to fit 36" and 42" single doors. These devices are recommended for use on exterior and interior out-swing doors.

Compliance

- Investigated to ANSI/BHMA A156.3-2014 requirements for Grade 1, UL 305

Applications

- Stores
- Office Parks
- Restaurants
- Retail Spaces



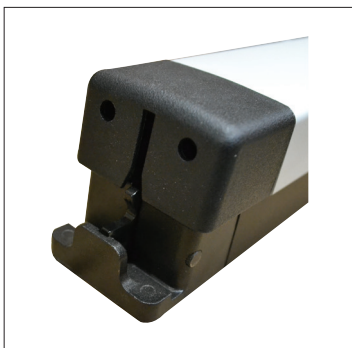
SA13166

Grade 1 Exit Devices, PD800 Series

Standard Features

Latch	Interlocking latch and strike. When the door closes, the interlocking noseguard and bolt close around the strike. The deadlocking slide springs over, locking the bolt to the strike. When push bar is depressed, the deadlocking slide moves back, allowing the door to unlock from the strike. This unique interlock provides solid security and prevents jamb spreading.
Device Lengths	36" wide doors (can be cut back to 30") 42" wide doors (can be cut back to 36")
Handing	Non-Handed
Material	Push bar is extruded aluminum.
Strike	Mounted on door jamb.
Door Types	Aluminum and glass storefront doors.
Door Prep	Installed on hollow aluminum door with vertical rods inside the hollow stile.
Dogging	Hex Key
Door Thickness	1¾" - 2¼"
Stile Width	Minimum 2" wide stile
Projection	Pushbar Neutral: 2⅝" Pushbar Dogged: 1⅝"
Keying	Installation of standard 1⅞" rim cylinder when exterior access is required

Latch



Grade 1 Exit Devices, PD800 Series

Designs

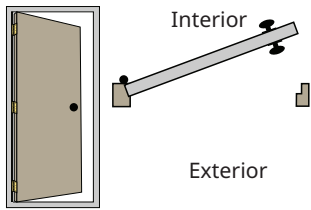


PD880 Rim Exit Device
Shown in Aluminum Finish

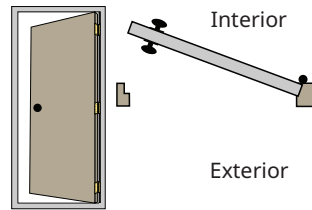


PD860 Concealed Vertical Rod Exit Device
Shown in Aluminum Finish

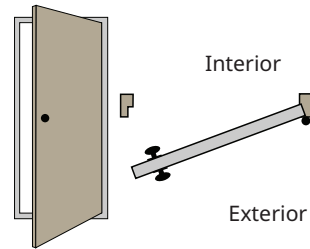
Handing



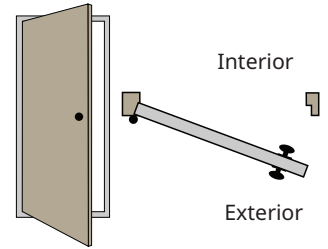
Left Hand Inswing



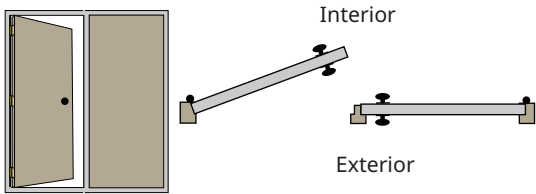
Right Hand Inswing



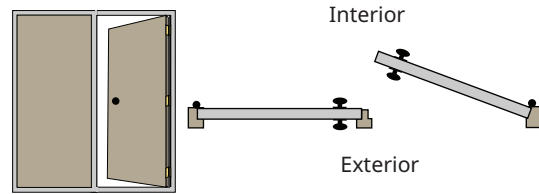
Left Hand Outswing (RHR)



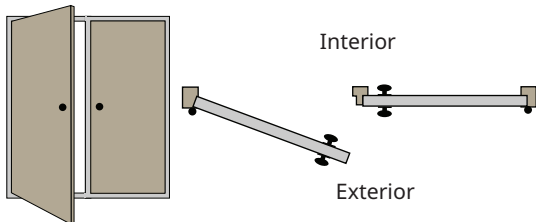
Right Hand Outswing (LHR)



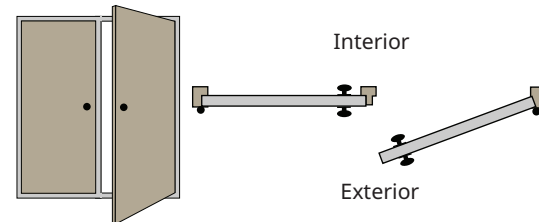
Left Hand Inswing Double Door



Right Hand Inswing Double Door



Left Hand Outswing Double Door



Right Hand Outswing Double Door

Grade 1 Exit Devices, PD800 Series

Finishes

**US28 / AL /
628**
Aluminum, Clear



DU / 313 / 690
Duranodic / Dark
Bronze



US19 / 622
Matte Black (BLK)

