

Grade 2 Exit Devices PD920 Series



Overview

The PD920 Series exit devices offer solutions for a variety of openings. The PD921R is a low-profile exit device, available in rim exit or vertical rod. The PD922RN is a commercial grade rim exit device designed for narrow stile aluminum and glass doors. The PD924RF is a fire rated rim exit device. for use on wood or metal fire-rated doors. All PD920 Series exit devices are recommended for use on exterior and interior out-swinging doors.

Compliance

- UL listed panic hardware (PD921R & PD922RN) or 3-hour fire exit hardware (PD924RF) for USA and Canada

Applications

- Stores
- Office Parks
- Warehouses
- Industrial Sites



Panic: SA7474
Fire: R26113



Grade 2 Exit Devices, PD920 Series

Standard Features

Latch	Deadlocking Latch
Device Lengths	PD921R/PD924RF: 36" (32.8" actual length; can be cut back to 24.8" from head cover to end cap) or 48" (44.8" actual length; can be cut back to 36.8" from head cover to end cap) PD922RN: 38" (37.88" actual length; can be cut back to 29.8" from head cover to end cap)
Handing	Non-Handed
Material	Aluminum, Steel, Stainless Steel
Strike	Surface applied; double door strike is available
Door Types	PD921R and PD924RF: Commercial wood and hollow metal PD922RN: Narrow stile "storefront" doors
Door Prep	The device is surface applied. Various exterior trims require different preps.
Dogging	Hex Key $\frac{5}{32}$
Door Thickness	1 $\frac{3}{4}$ "
Stile Width	PD921R & PD924R F: Minimum 4 $\frac{1}{4}$ " wide stile PD922RN: Minimum 2" wide stile
Projection	Maximum 2 $\frac{1}{2}$ "
Keying	LR and KR trims come with SC4 rekeyable 6-pin cylinders and are compatible with LSDA C500 replacement cylinders, as well as many other retrofit cylinders including most high-security brands. W92, FP9240, LE9250, and TP9250 trims use mortise or rim cylinders in any keyway.

Grade 2 Exit Devices, PD920 Series

Designs



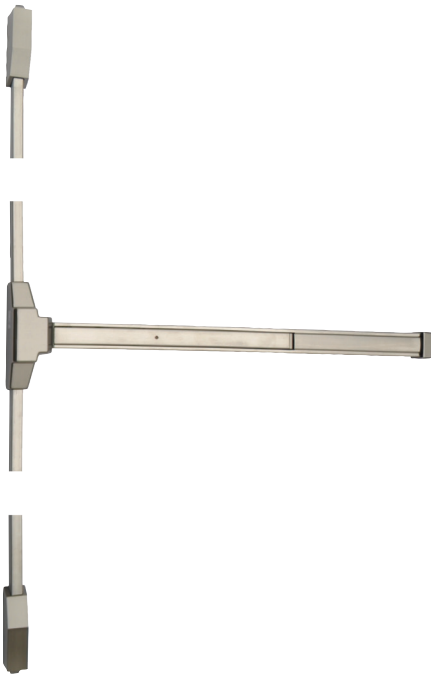
PD921R Rim Exit Device
Shown in AL Finish



PD922RN Rim Exit Device
Shown in DU Finish



PD924RF Rim Exit Device
Shown in AL Finish



PD921V Vertical Rod Exit Device
Shown in 32D Finish

Grade 2 Exit Devices, PD920 Series

Finishes



Handing

