

**LHR DOOR
INSIDE FACE**

**GRADE 1 WIDE STILE
RIM EXIT DEVICE TEMPLATE**
(FOR PANIC AND FIRE RATED DEVICES)

REV ; 04, 07/2017

Mounting Holes :
Metal Door – Drill/Tap for 1/4" -20
machine screws
Wood Door – 1/8" Pilot Drill

Mounting Holes : A,B,C,D 4 places

Metal Door :
For Mounting Screws – Drill/Tap for 1/4-20 machine screws
For Sex Bolts – Drill \varnothing 5/16" (8 mm) holes inside
Drill \varnothing 13/32" (10 mm) holes outside
**For Trim – Drill \varnothing 5/16" (8 mm) holes inside
Drill \varnothing 1/2" (13 mm) holes outside**

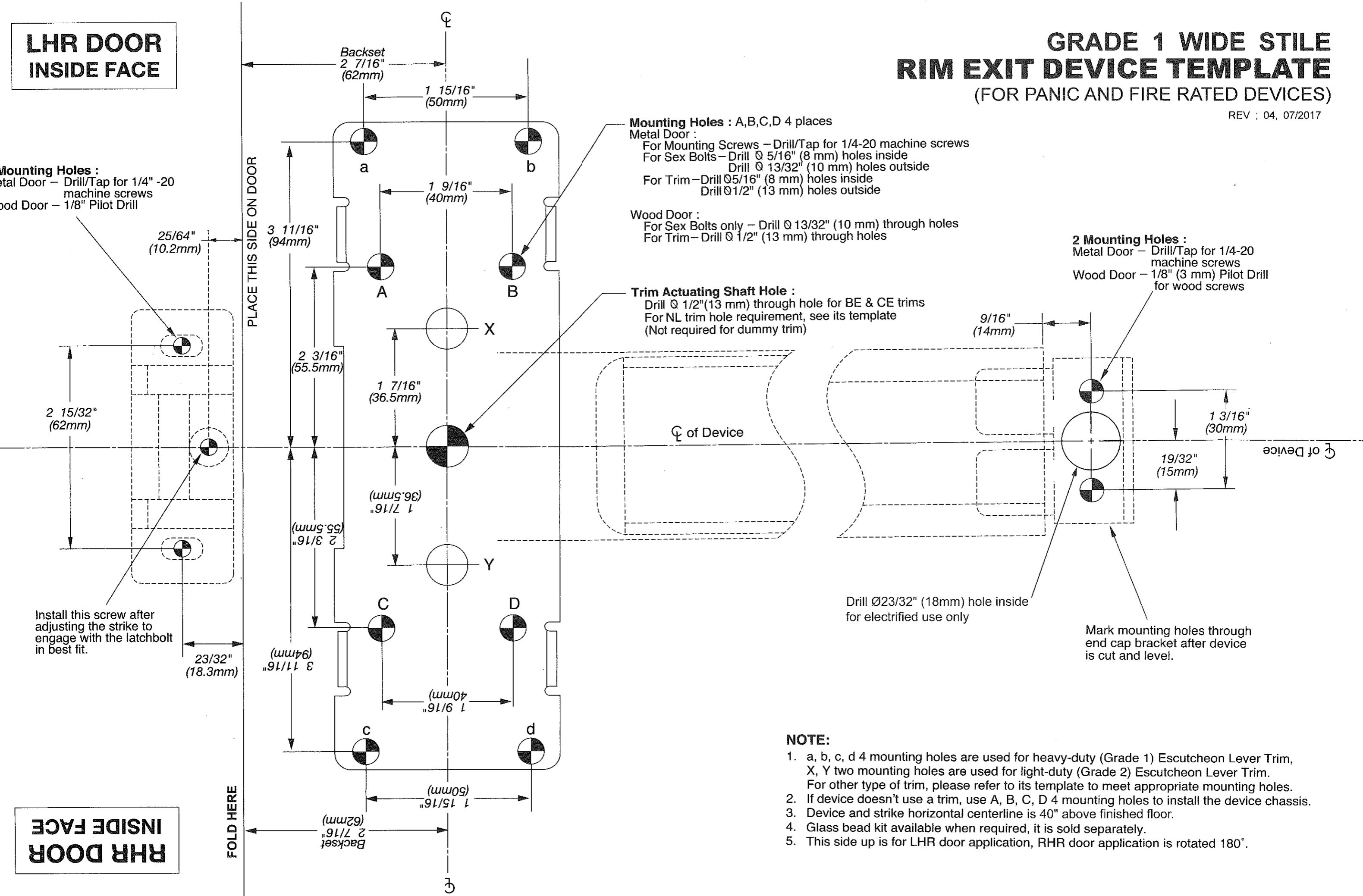
Wood Door :
For Sex Bolts only – Drill \varnothing 13/32" (10 mm) through holes
For Trim – Drill \varnothing 1/2" (13 mm) through holes

2 Mounting Holes :

**Metal Door – Drill/Tap for 1/4-20
machine screws
Wood Door – 1/8" (3 mm) Pilot Drill
for wood screws**

Trim Actuating Shaft Hole :

Drill \varnothing 1/2" (13 mm) through hole for BE & CE trims
For NL trim hole requirement, see its template
(Not required for dummy trim)



Install this screw after
adjusting the strike to
engage with the latchbolt
in best fit.

Drill \varnothing 23/32" (18mm) hole inside
for electrified use only

Mark mounting holes through
end cap bracket after device
is cut and level.

NOTE:

1. a, b, c, d 4 mounting holes are used for heavy-duty (Grade 1) Escutcheon Lever Trim, X, Y two mounting holes are used for light-duty (Grade 2) Escutcheon Lever Trim. For other type of trim, please refer to its template to meet appropriate mounting holes.
2. If device doesn't use a trim, use A, B, C, D 4 mounting holes to install the device chassis.
3. Device and strike horizontal centerline is 40" above finished floor.
4. Glass bead kit available when required, it is sold separately.
5. This side up is for LHR door application, RHR door application is rotated 180°.

**RHR DOOR
INSIDE FACE**