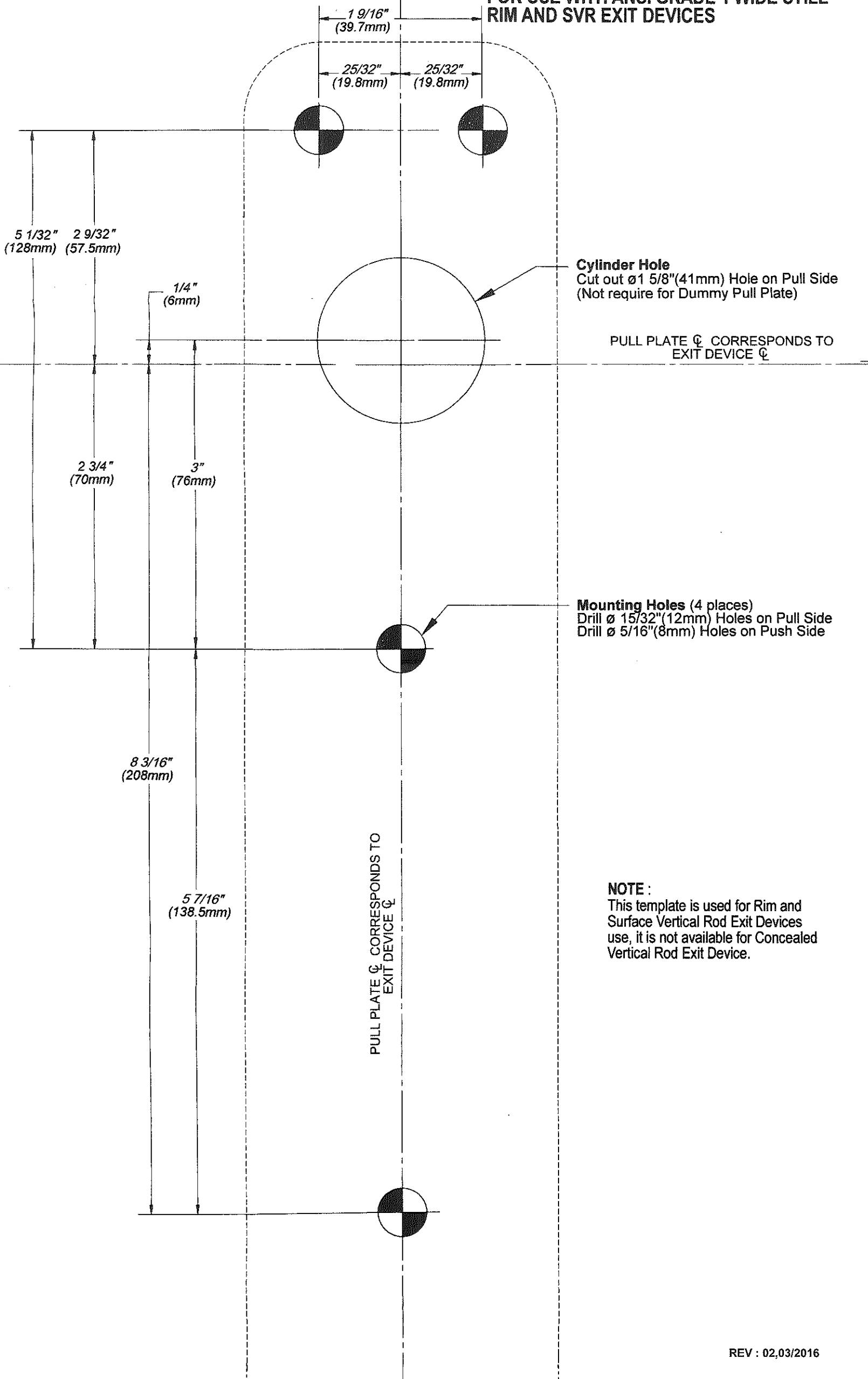


# PULL PLATE TEMPLATE

FOR USE WITH ANSI GRADE 1 WIDE STILE  
RIM AND SVR EXIT DEVICES



**Cylinder Hole**  
Cut out  $\frac{5}{8}$ " (41mm) Hole on Pull Side  
(Not require for Dummy Pull Plate)

PULL PLATE  $\phi$  CORRESPONDS TO  
EXIT DEVICE  $\phi$

**Mounting Holes (4 places)**  
Drill  $\frac{15}{32}$ " (12mm) Holes on Pull Side  
Drill  $\frac{5}{16}$ " (8mm) Holes on Push Side

**NOTE :**  
This template is used for Rim and  
Surface Vertical Rod Exit Devices  
use, it is not available for Concealed  
Vertical Rod Exit Device.