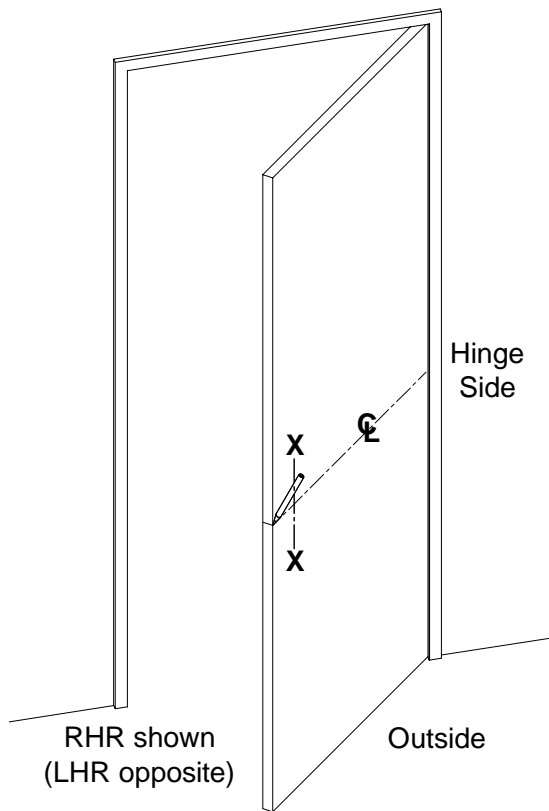


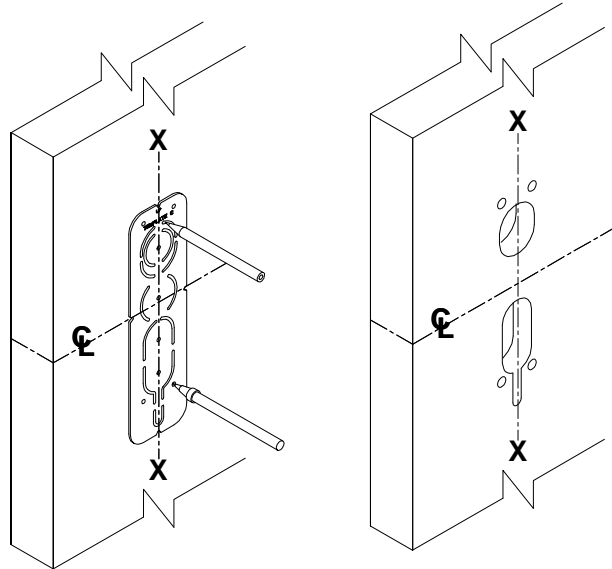
LSDA

PD9200 SERIES ESCUTCHEON TRIM FOR EXIT DEVICE

INSTALLATION INSTRUCTIONS

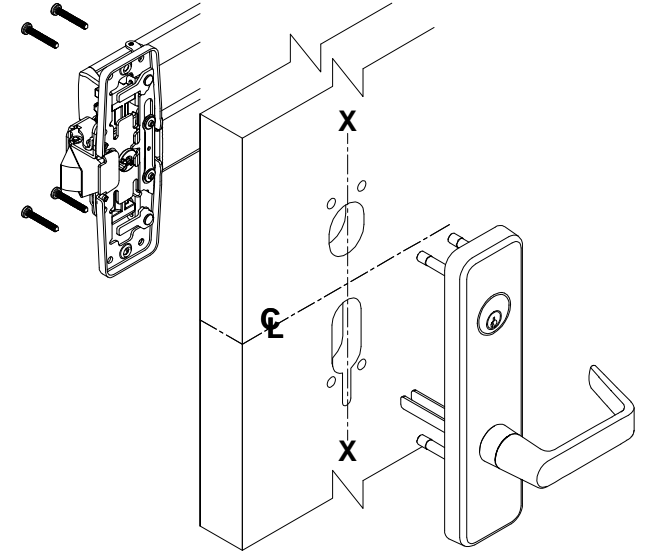


1. Prepare door for exit device. See exit device instructions for holes, backset (line X-X), and center lines.
2. Transfer line X-X from inside (exit device) side of door to outside (trim side) of door. Use extra care if edge of door is beveled. Be sure line X-X is parallel to edge of door.



3. Locate X-X line and prepare required holes with "Template C".

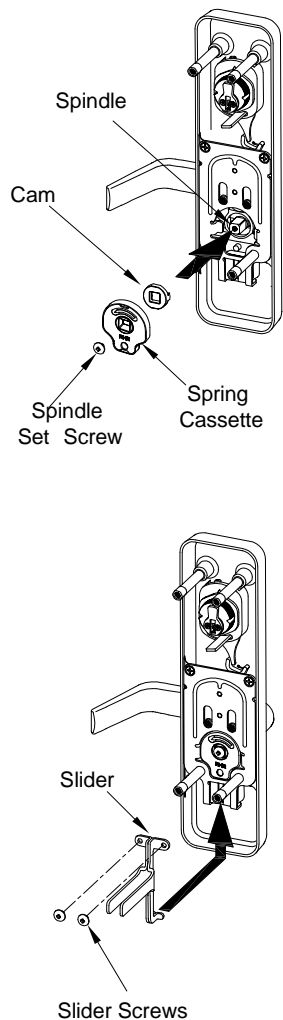
NOTE: See "TEMPLATE APPLICATION CHART" on back page for different trim functions.



4. Determine trim handing and assemble trim. (see "HOW TO ASSEMBLE TRIM" and "INSTALL CYLINDER")

HOW TO ASSEMBLE TRIM

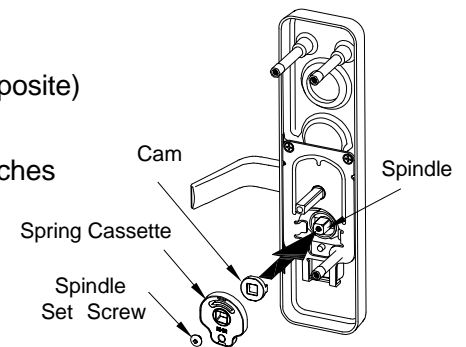
FOR FUNCTIONAL LEVER



1. Determine lever handing. (RHR shown; LHR opposite)
2. Insert cam on spindle.
3. Insert spring cassette and make sure the direction of spring cassette matches with lever handing.
4. Rotate lever to check function, tighten spindle set screw.
5. Install slider by fitting tabs into guide under mechanism.
6. Fasten slider set screws with moving parts in mechanism.

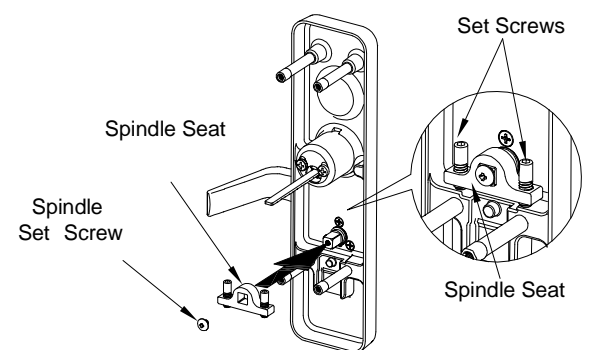
FOR MORTISE LOCK

1. Determine lever handing. (RHR shown; LHR opposite)
2. Insert cam on spindle.
3. Make sure the direction of spring cassette matches with lever handing. Insert spring cassette.
4. Rotate lever to check function and tighten spindle set screw.



FOR RIGID LEVER

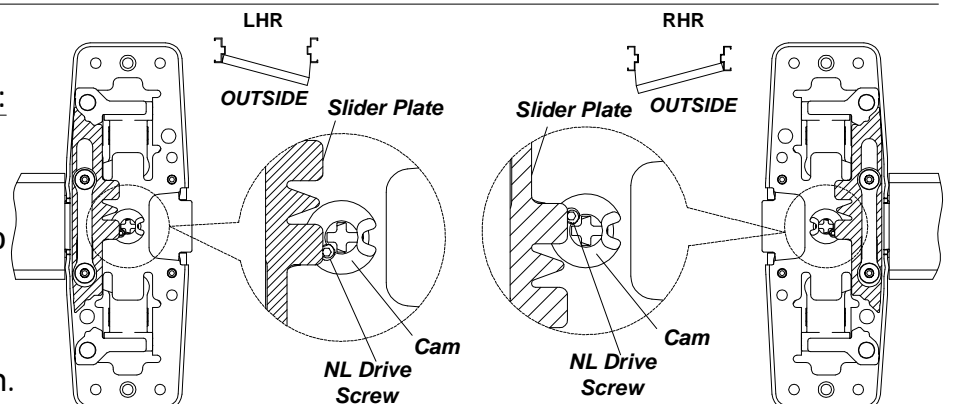
1. Determine lever handing. (RHR shown; LHR opposite)
2. Install spindle seat and tighten spindle set screw.
3. Tighten set screws on spindle seat and level the lever by adjusting either side set screws if necessary.



NOTE

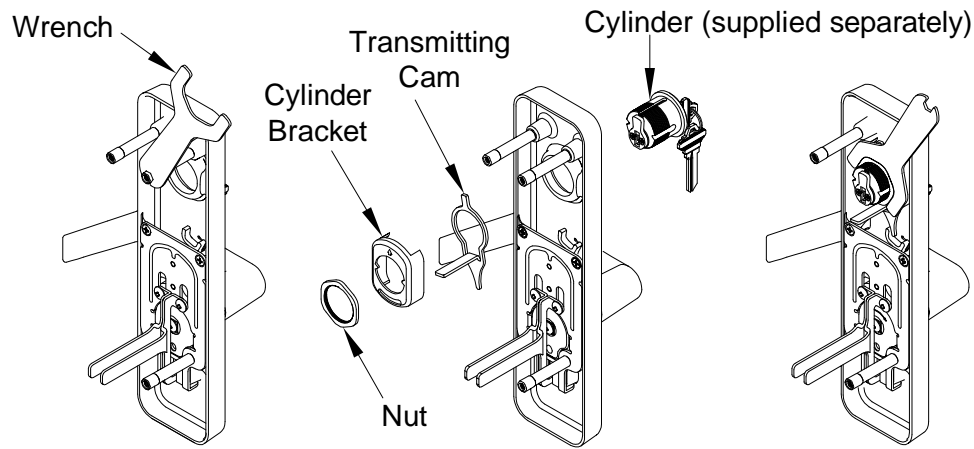
- For installing the PDT26RV/PDT21RV trim:
1. Remove the NL Drive Screw.
 2. Turn the cam to move the slider plate upward. (Regardless of the RHR or LHR handing, the slider plate always needs to stay in the upward position.)

*The NL Drive Screw does not need to be replaced for both PDT26RV / PDT21RV trim.



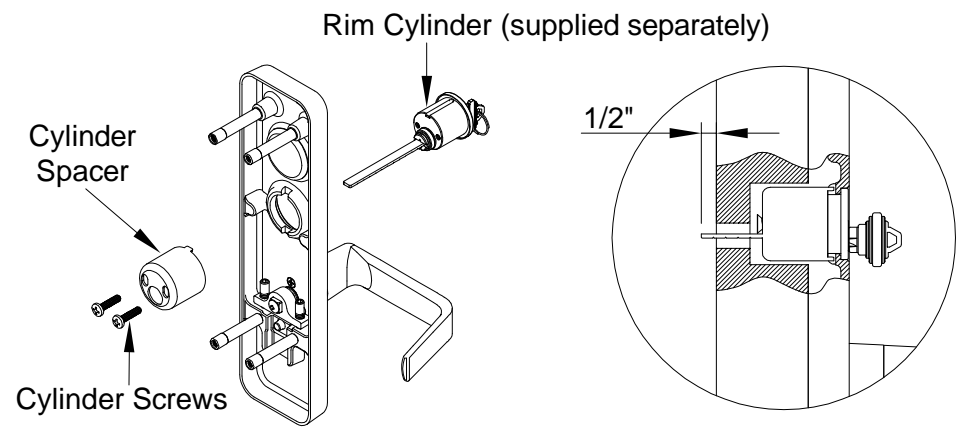
INSTALL CYLINDER

FOR MORTISE CYLINDER



1. Use the wrench provided to unscrew the thru-bolt.
2. Install cylinder, transmitting cam, cylinder bracket and nut.
3. Secure nut tightly by the wrench and re-install thru-bolt.

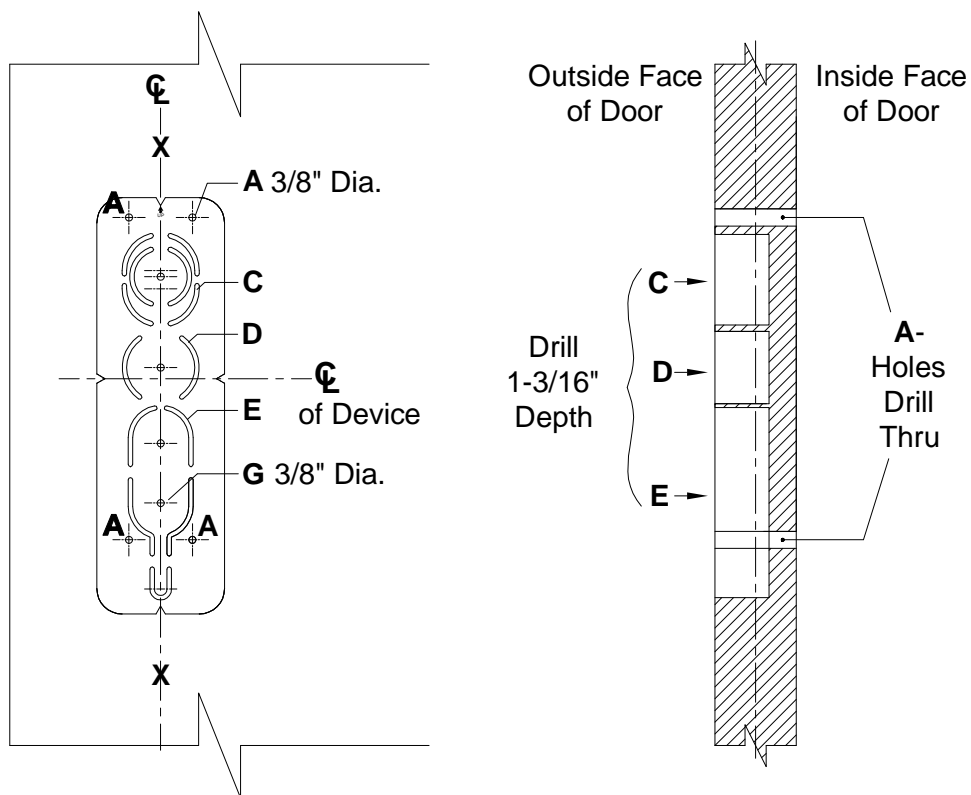
FOR RIM CYLINDER



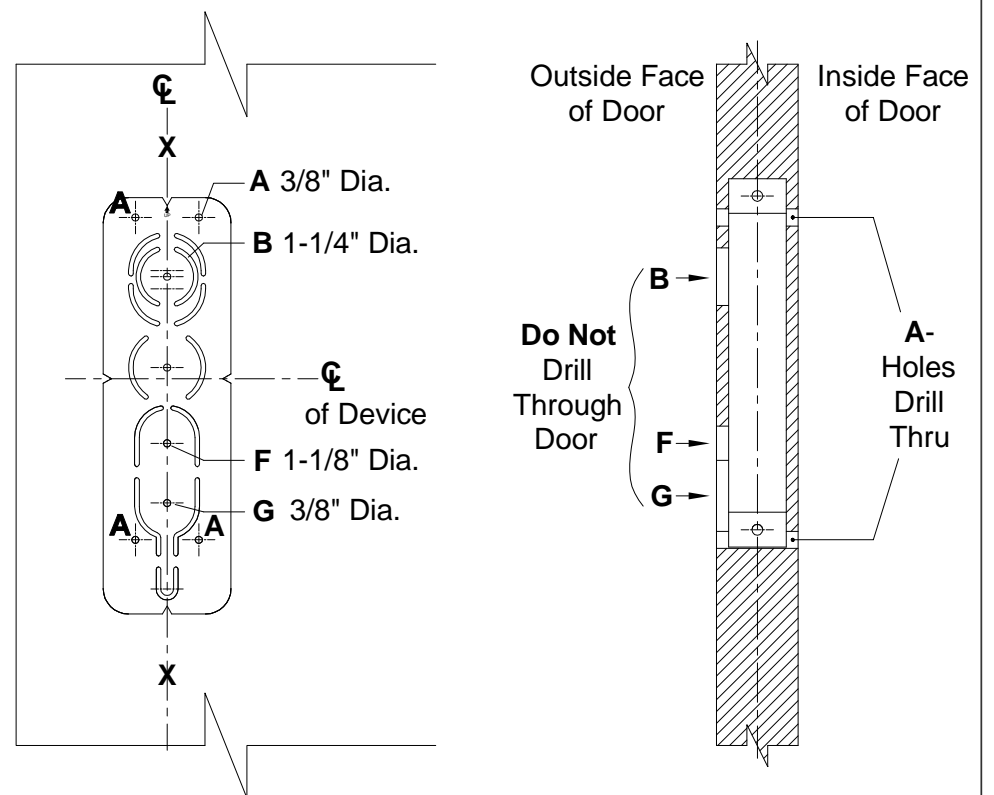
1. Mount rim cylinder to cylinder spacer and attach to outside trim with two(2) cylinder screws.
 2. Make sure the tailpiece is extending 1/2" from the inside face of door.
- NOTE:** Cut off tailpiece for different door ranges and various cylinder lengths.

DOOR PREPARATION FOR 300 SERIES TRIM

FOR RIM AND VERTICAL ROD DEVICE



FOR MORTISE LOCK



TEMPLATE APPLICATION CHART

DEVICE TYPE	RIM AND VERTICAL ROD			MORTISE LOCK		
CUT OUT ILLUSTRATION						
TRIM DESCRIPTION	PDT26RV	PDT27RV	PDT21RV	PDT26M	PDT27M	PDT21M
FUNCTION	08	09	14	08	09	14
PREPARATION	A+C+E	A+D	A+E	A+B+F+G	A+B+G	A+F+G