

# Grade 1 Knob Locks 4000 Series



## Overview

The 4000-Series cylindrical lever locks are designed for high traffic applications. They are tested to exceed 1 million cycles. These heavy duty locks come with a popular flat rose design. These locks are recommended for use on exterior and interior doors.

## Compliance

- ANSI/BHMA 156.2 Series 4000, Grade 1; Meets UL10C and UBC7-2 (1997) Positive Pressure
- Latch is UL Listed (USA and Canada, R14024) for 3-hour fire doors, included

## Applications

- Offices
- Hospitals
- Schools
- Multi-Family Buildings
- Public Buildings



# Grade 1 Knob Locks, 4000 Series

## Standard Features:

<b>Latch</b>	2¾" UL Backset included, 2⅜" UL Backset available
<b>Handing</b>	Non-Handed
<b>Materials</b>	Wrought brass, bronze or stainless steel
<b>Strike</b>	4⅞" x 1¼" ANSI Curved Lip Strike, Lip to Center
<b>Door Prep</b>	2⅛" diameter bore, 1" crossbore
<b>Door Thickness</b>	1⅜" - 2" Standard
<b>Faceplate</b>	1⅞" - 2¼" square corner, beveled for 2¾" backset
<b>Latch Bolt</b>	½" throw solid brass, deadlocking on keyed and non-keyed function
<b>Rose Diameter</b>	2¾" Tapered, Flat
<b>Keying</b>	Cylinders: Equipped with SC4 rekeyable 6-pin brass cylinders, compatible with LSDA Replacement C500 cylinders and many other retrofit cylinders including most high security brands. Keyed Different (KD) SFIC: Some models prepped for Small Format Interchangeable Core (SFIC), such as 6- or 7-Pin Best® style cores

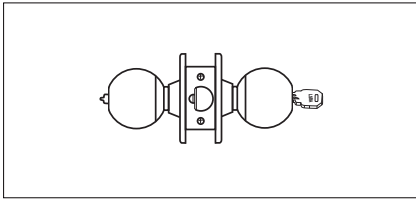
# Grade 1 Knob Locks, 4000 Series

## Designs



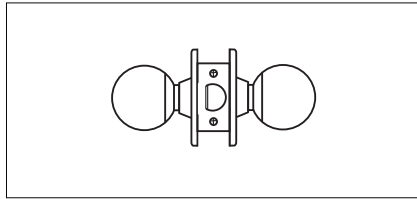
Ball (B)  
Entrance Function  
Shown in 26D Finish

## Functions



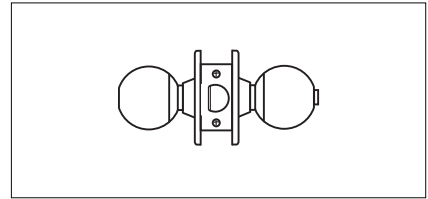
### Entrance/Office

Pushing and turning inside button locks outside knob requiring use of key until button is manually unlocked. Pushing inside button locks outside knob until unlocked with a key or inside knob is turned. Inside knob always retracts the latch.



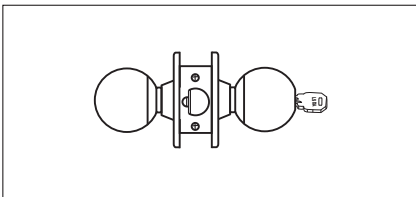
### Passage

Both knobs always retract the latch



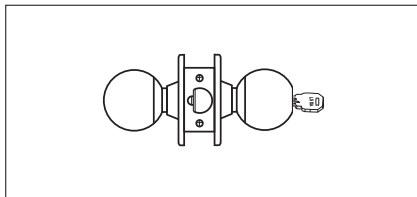
### Privacy

Pushing inside button locks outside knob until inside knob is turned. Emergency tool can be used to unlock outside knob. Inside knob always retracts the latch.



### Storeroom

Outside knob never retracts the latch. Entrance by key only. Inside knob always retracts the latch.



### Classroom

Outside knob is locked and unlocked with a key in the outside cylinder. The inside knob always retracts the latch.

# Grade 1 Knob Locks, 4000 Series

## How to Order

### Entrance/Office

Mfr.#	Desc.	EZ#
<b>4000B32D IC2-3/4UL</b>	SFIC, Less Core	<b>103404</b>
<b>4000B32D SC4 2-3/4UL</b>	SC4 Keyway	<b>103403</b>

### Passage

Mfr.#	Desc.	EZ#
<b>4100B32D2-3/4UL</b>	Passage	<b>103406</b>

### Privacy

Mfr.#	Desc.	EZ#
<b>4200B32D2-3/4UL</b>	Privacy	<b>103408</b>

### Storeroom

Mfr.#	Desc.	EZ#
<b>4400B32D SC4 2-3/4UL</b>	Storeroom, SC4 Keyway	<b>103410</b>

### Classroom

Mfr.#	Desc.	EZ#
<b>4500B32D SC4 2-3/4UL</b>	Classroom, SC4 Keyway	<b>103413</b>

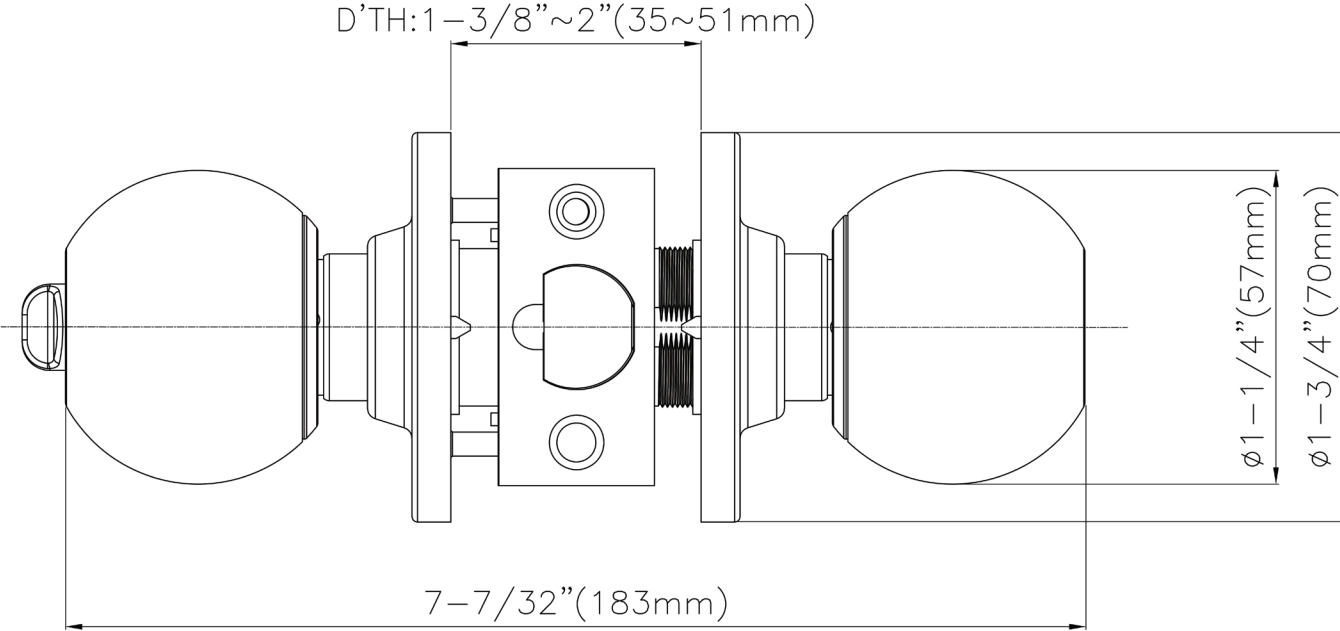
### Institutional\*

Mfr.#	Desc.	EZ#
<b>4900B32D SC4 2-3/4UL</b>	Institutional, SC4 Keyway	<b>105686</b>

\* Locksets that secure both sides of the door are controlled by building codes and the Life Safety Code. In an emergency exit situation, failure to quickly unlock the inside knob could be hazardous or even fatal.

# Grade 1 Knob Locks, 4000 Series

## Dimensions



# Grade 1 Knob Locks, 4000 Series

## Parts and Accessories



### ULDL

- Deadlatches, 2 $\frac{3}{8}$ " or 2 $\frac{3}{4}$ " Backset
- UL Listed for 3-hour Fire Rating
- Finishes: US32D



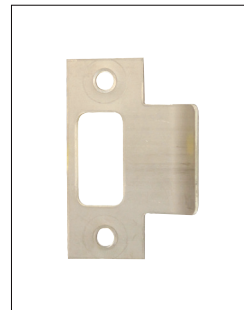
### ULSL

- Springlatches, 2 $\frac{3}{8}$ " or 2 $\frac{3}{4}$ " Backset
- UL Listed for 3-hour Fire Rating
- Finishes: US32D



### FTPSFIC

- SFIC Tailpiece
- Minimum 10



### T STRIKE

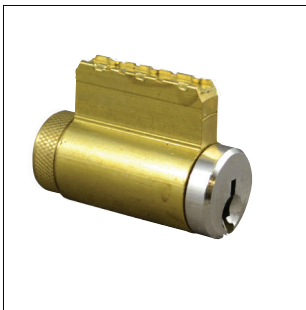
- Optional T-Strike
- Finishes: US32D



### ASA STRIKE

- Optional ASA Strike
- Finishes: US32D

Mfr.#	EZ#	Mfr.#	EZ#	Mfr.#	EZ#	Mfr.#	EZ#	Mfr.#	EZ#
ULDL2-3/8 32D	103371	ULSL2-3/8 32D	103374	FTPSFIC	103375	T STRIKE32D	066996	ASA26D	008876
ULDL2-3/8 10BE	103370	ULSL2-3/4 32D	106444			T STRIKE3	066995		
ULDL2-3/4 32D	105679								



### C500

- Replacement cylinders, various finishes and keyways available
- Keyways:
  - Arrow K7 (AW)
  - Corbin 60 (C60)
  - Composite (CO)
  - Corbin L4 (CRL)
  - Kwikset 1063 (KW)
  - Sargent LA (LA)
  - Sargent LA-LC (LAC)
  - LSA (LSA)
  - Russwin 981 (R981)
  - Russwin D1 (RD1)
  - Schlage C (SCC)
  - Schlage E (SCE)
  - Schlage C-K (SCK)
  - Weiser 1555 (WE)
  - Yale 8 (YA8)
  - Yale GA (YGA)
- Finishes:
  - US3
  - US26D

Mfr.#	EZ#	Mfr.#	EZ#
C500AW26D	076148	C500R981 26D	076163
C500AW3	076147	C500RD1 26D	076162
C500C60 26D	076152	C500RD1 3	076161
C500C60 3	076151	C500SCC26D	076165
C500CO26D	076150	C500SCC3	076164
C500CO3	076149	C500SCE26D	076167
C500CRL4 26D	102415	C500SCK26D	076169
C500CRL4 3	102416	C500SCK3	076168
C500KW26D	076156	C500WE26D	076171
C500KW3	076155	C500WE3	076170
C500LA26D	076158	C500YA8 26D	076173
C500LA3	076157	C500YA8 3	076172
C500LAC26D	102417	C500YGA26D	102419
C500LAC3	102418	C500YGA3	102420
C500LSA26D	076160		
C500LSA3	076159		

# Grade 1 Knob Locks, 4000 Series

## Finishes

