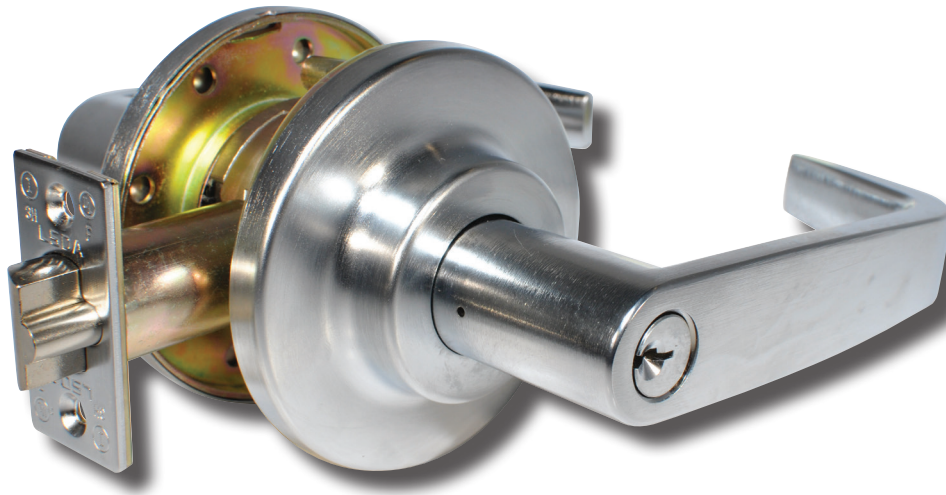


# Grade 1 Lever Locks LF2000 Series



## Overview

LF-Series cylindrical lever locks are designed for high traffic applications. Unique cold-rolled steel spindles withstand up to 1000 inch-pounds of torque and the lever is compliant with ADA and other accessibility codes. These locks are recommended for use on exterior and interior doors.

## Compliance

- ANSI/BHMA 156.2 Series 4000, Grade 1
- Latch is UL Listed (USA and Canada, R14024) for 3-hour fire doors, included, for single swing doors (4'x8')
- ADA: The Americans With Disabilities Act (ADA) states that locks shall be operable with one hand and shall not require tight grasping, tight pinching or twisting of the wrist.

## Applications

- Offices
- Hospitals
- Schools
- Multi-Family Buildings
- Industrial Sites
- Public Buildings



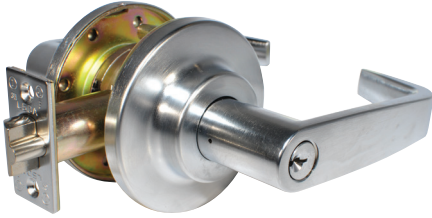
# Grade 1 Lever Locks, LF2000 Series

## Standard Features:

<b>Latch</b>	2¾" Backset UL Listed included; 2⅜" UL Listed Backset available
<b>Handing</b>	Non-Handed
<b>Materials</b>	Stainless Steel, Brass, Solid Die-Cast Plated
<b>Strike</b>	4⅞" x 1⅛" ANSI
<b>Door Prep</b>	ANSI 115.2 for thru-bolted installation, 2¼" x 1⅞" latch face
<b>Door Thickness</b>	1⅜" - 2" standard; Thick door packages are available for 2¼", Fixed Thru Bolts
<b>Rose Diameter</b>	3½"
<b>Keying</b>	<p>Cylinders: Equipped with SC4 rekeyable 6-pin brass cylinders, compatible with LSDA Replacement C500 cylinders and many other retrofit cylinders including most high security brands.</p> <p>SFIC: Some models prepped for Small Format Interchangeable Core (SFIC), such as 6- or 7-Pin Best® style cores</p> <p>LFIC: Some models prepped for Large Format Interchangeable Core (LFIC) such as Schlage, available in limited product selection.</p>

# Grade 1 Lever Locks, LF2000 Series

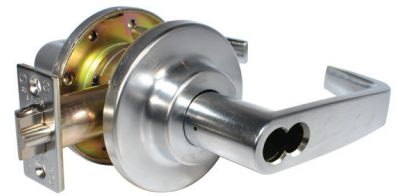
## Designs



Evanston  
Entrance Function  
Shown in 26D Finish

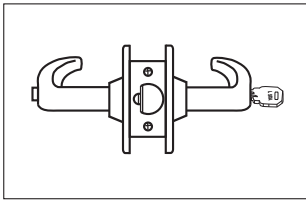


Evanston  
Entrance Function, SFIC  
Shown in 26D Finish



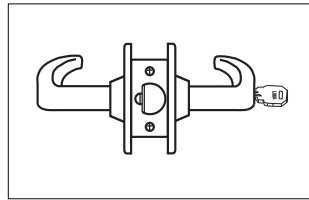
Evanston  
Entrance Function, LFIC  
Shown in 26D Finish

## Functions



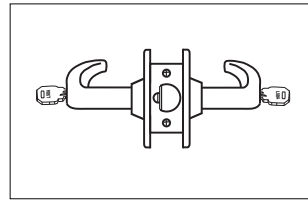
### Entrance/Office

Pushing and turning inside button locks outside lever requiring use of key until button is manually unlocked. Pushing inside button locks outside lever until unlocked with a key or inside lever is turned. Inside lever always retracts latch. Available with or without Clutch.



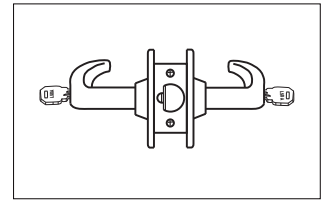
### Classroom

Outside lever is locked and unlocked with a key in the outside cylinder. The inside lever always retracts the latch. Available with or without Clutch.



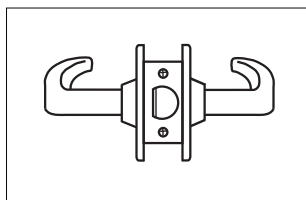
### Classroom Intruder

Key in either lever locks or unlocks outside lever. Inside lever is always unlocked and free for egress. Available with or without Clutch.



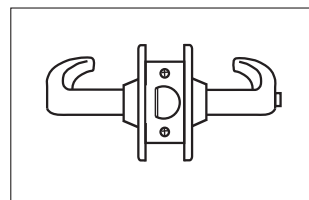
### Institutional

Neither lever/knob retracts the latch. A key is required in both the inside and outside cylinder to retract the latch. Available with or without Clutch.



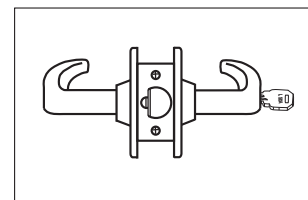
### Passage

Both levers always retract the latch



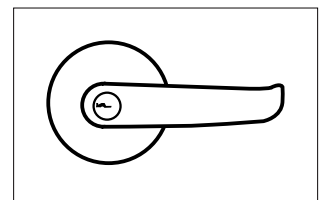
### Privacy

Pushing inside button locks outside lever until inside lever is turned. Emergency tool can be used to unlock outside lever. Inside lever always retracts the latch.



### Storeroom

Outside lever never retracts the latch. Entrance by key only. Inside lever always retracts the latch. Available with or without Clutch.



### Benefits of a Clutch Lever

Clutch mechanism, or "free-wheeling" design offers an advantage over rigid locked leversets by reducing the torque applied to the outside lever

# Grade 1 Lever Locks, LF2000 Series

## Finishes

**US3 / 505 / 605**  
Bright Brass



**US10B / 613**  
Oil Rubbed Bronze



**US26D / 626**  
Satin Chrome

