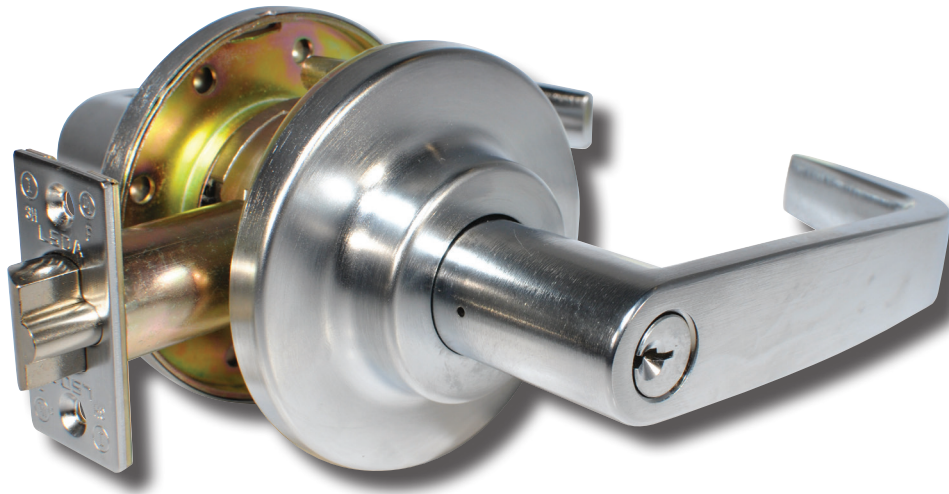


Grade 1 Lever Locks LF2000 Series



Overview

LF-Series cylindrical lever locks are designed for high traffic applications. Unique cold-rolled steel spindles withstand up to 1000 inch-pounds of torque and the lever is compliant with ADA and other accessibility codes. These locks are recommended for use on exterior and interior doors.

The LF2000 Electrically Unlocked (EU) door locks combine the design and functionality of traditional security hardware with the ability to be unlocked with low voltage electricity. LSDA LF2400EU lever locks can be a part of any hard-wired access control system. They are "fail-secure", remaining locked even during a power outage. Mechanically, the LF2400EU is a heavy duty Grade 1 leverset and is UL listed for Electrically Controlled Openings.

Compliance

- ANSI/BHMA 156.2 Series 4000, Grade 1
- Latch is UL Listed (USA and Canada, R14024) for 3-hour fire doors, included, for single swing doors (4'x8')
- ADA: The Americans With Disabilities Act (ADA) states that locks shall be operable with one hand and shall not require tight grasping, tight pinching or twisting of the wrist.

Applications

- Offices
- Hospitals
- Schools
- Multi-Family Buildings
- Industrial Sites
- Public Buildings



R14024 (Mechanical)
R27465 (Electrified)



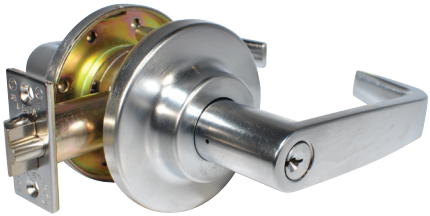
Grade 1 Lever Locks, LF2000 Series

Standard Features:

Latch	2¾" Backset UL Listed included; 2⅜" UL Listed Backset available
Handing	Non-Handed
Materials	Stainless Steel, Brass, Solid Die-Cast Plated
Strike	4⅞" x 1⅞" ANSI
Door Prep	ANSI 115.2 for thru-bolted installation, 2¼" x 1⅞" latch face
Door Thickness	1⅜" - 2" standard; Thick door packages are available for 2¼", Fixed Thru Bolts
Rose Diameter	3½"
Keying	Cylinders: Equipped with SC4 rekeyable 6-pin brass cylinders, compatible with LSDA Replacement C500 cylinders and many other retrofit cylinders including most high security brands. SFIC: Some models prepped for Small Format Interchangeable Core (SFIC), such as 6- or 7-Pin Best® style cores LFIC: Some models prepped for Large Format Interchangeable Core (LFIC) such as Schlage, available in limited product selection.
Voltage	12V DC models offer a maximum current of 0.293 Amps 24V DC models require a maximum current of 0.145 Amps Request To Exit (REX) models include a circuit for connection to an access control panel
Fail Safe/Secure	Fail Secure, remaining locked during power outage

Grade 1 Lever Locks, LF2000 Series

Designs



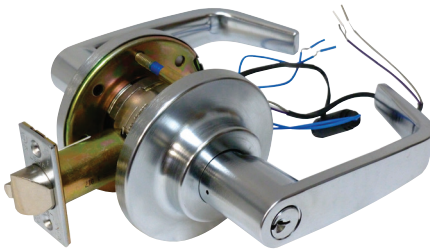
Evanston
Entrance Function
Shown in 26D Finish



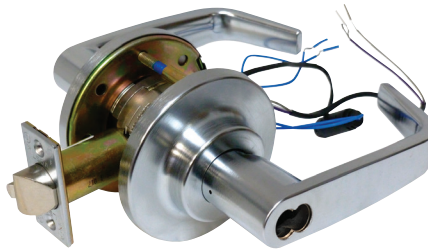
Evanston
Entrance Function, SFIC
Shown in 26D Finish



Evanston
Entrance Function, LFIC
Shown in 26D Finish



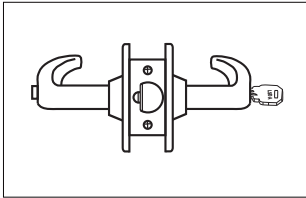
Evanston
Storeroom Function
Shown in 26D Finish



Evanston
Storeroom Function, SFIC
Shown in 26D Finish

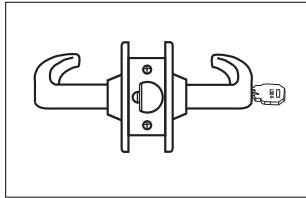
Grade 1 Lever Locks, LF2000 Series

Functions



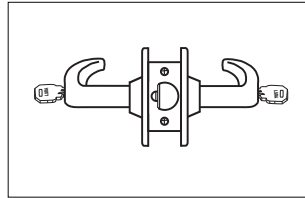
Entrance/Office

Pushing and turning inside button locks outside lever requiring use of key until button is manually unlocked. Pushing inside button locks outside lever until unlocked with a key or inside lever is turned. Inside lever always retracts latch. Available with or without Clutch.



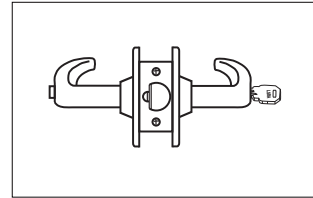
Classroom

Outside lever is locked and unlocked with a key in the outside cylinder. The inside lever always retracts the latch. Available with or without Clutch.



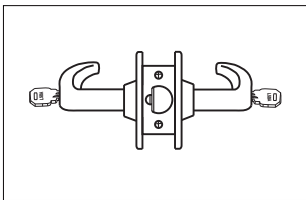
Classroom Intruder

Key in either lever locks or unlocks outside lever. Inside lever is always unlocked and free for egress. Available with or without Clutch.



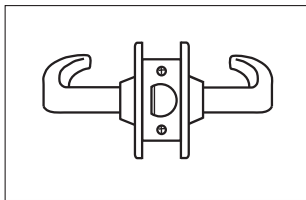
Dormitory

Turning the key in the outside lever or pushing and turning inside button locks outside lever requiring use of key until button is manually unlocked. Pushing inside button locks outside lever until unlocked with a key or inside lever is turned. Inside lever always retracts latch.



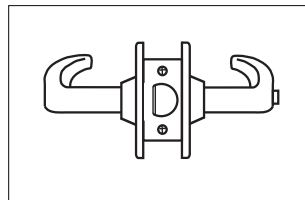
Institutional

Neither lever/knob retracts the latch. A key is required in both the inside and outside cylinder to retract the latch. Available with or without Clutch.



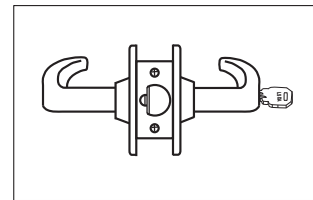
Passage

Both levers always retract the latch



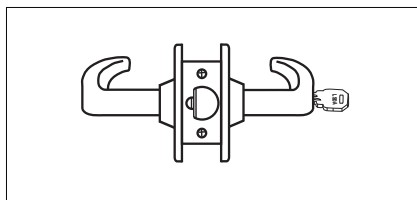
Privacy

Pushing inside button locks outside lever until inside lever is turned. Emergency tool can be used to unlock outside lever. Inside lever always retracts the latch.



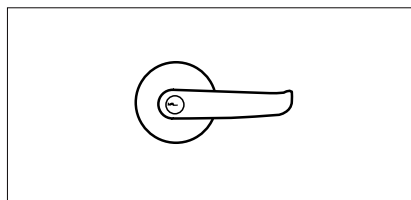
Storeroom

Outside lever never retracts the latch. Entrance by key only. Inside lever always retracts the latch. Available with or without Clutch.



Electrically Unlocked Storeroom

When current is applied, the outside lever can be used to retract the latch. When no current is applied, the outside lever is rigid and the latch can be retracted with a key override. The inside lever can always retract the latch with or without current applied.



Benefits of a Clutch Lever

Clutch mechanism, or "free-wheeling" design offers an advantage over rigid locked leversets by reducing the torque applied to the outside lever

Grade 1 Lever Locks, LF2000 Series

How to Order

Entrance/Office

Mfr.#	Desc.	EZ#
LF2000 10B	Entrance, SC4 Keyway	077535
LF2000 26D	Entrance, SC4 Keyway	077536
LF2000 3	Entrance, SC4 Keyway	077537
LF2000IC26D	Entrance, Less SFIC	077970
LF2000IC10B	Entrance, Less SFIC	106362
LF2000FSIC26D	Entrance, Less Schlage FSIC	103995
LFC2000 10B	Entrance, w/Clutch	085984
LFC2000 26D	Entrance, w/Clutch	085985
LFC2000IC26D	Entrance, Less SFIC, w/Clutch	085995

Passage

Mfr.#	Desc.	EZ#
LF2100 10B	Passage	077538
LF2100 26D	Passage	077539
LF2100 3	Passage	077540

Privacy

Mfr.#	Desc.	EZ#
LF2200 26D	Privacy	077542
LF2200 3	Privacy	077543
LF2200 10B	Privacy	077541

Classroom

Mfr.#	Desc.	EZ#
LF2500 26D	Classroom, SC4 Keyway	077548
LF2500 3	Classroom, SC4 Keyway	077549
LF2500IC26D	Classroom, Less SFIC	077972
LFC2500 26D	Classroom, w/Clutch	085991
LFC2500IC26D	Classroom, Less SFIC, w/Clutch	085997

Dormitory

Mfr.#	Desc.	EZ#
LF2600IC26D	Dormitory, Less SFIC	181978

Storeroom

Mfr.#	Desc.	EZ#
LF2400 10B	Storeroom, SC4 Keyway	077544
LF2400 26D	Storeroom, SC4 Keyway	077545
LF2400 3	Storeroom, SC4 Keyway	077546
LF2400FSIC26D	Storeroom, Less Schlage FSIC	103996
LF2400IC10B	Storeroom, Less SFIC	106363
LF2400IC26D	Storeroom, Less SFIC	077971
LFC2400 26D	Storeroom, w/Clutch, SC4 Keyway	085988
LFC2400IC26D	Storeroom, Less SFIC, w/Clutch	085996

Classroom Intruder*

Mfr.#	Desc.	EZ#
LF2800 26D	Classroom Intruder, SC4 Keyway	087925
LF2800IC26D	Classroom Intruder, Less SFIC	087926
LFC2800 26D	Classroom Intruder, w/Clutch, SC4 Keyway	087927
LFC2800IC26D	Classroom Intruder, Less SFIC, w/Clutch	087928

Institutional*

Mfr.#	Desc.	EZ#
LF2900 10B	Institutional, SC4 Keyway	077550
LF2900 26D	Institutional, SC4 Keyway	077551
LF2900IC26D	Institutional, Less SFIC	081703
LFC2900 26D	Institutional, w/Clutch	085994

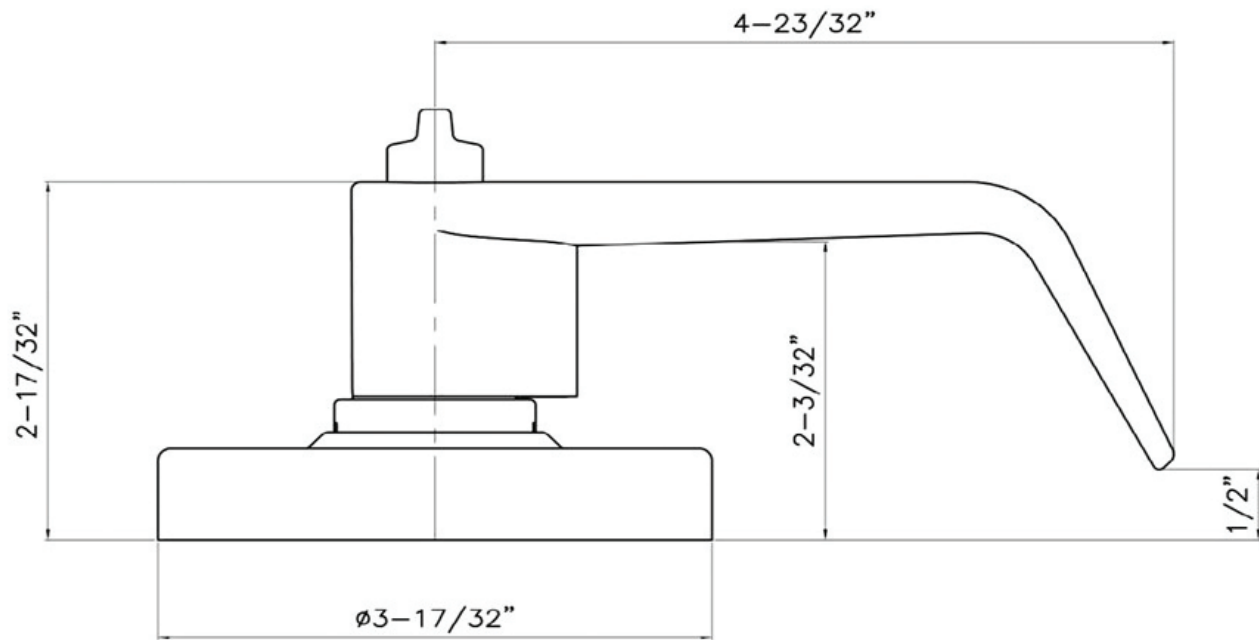
Electrically Unlocked Storeroom

Mfr.#	Desc.	EZ#
LF2400EU26D12V	12V DC, SC4 Keyway	101544
LF2400EU26D24V	24V DC, SC4 Keyway	101164
LF2400EU26D12V REX	12V DC w/REX, SC4 Kwy	101546
LF2400EU26D24V REX	24V DC w/REX, SC4 Kwy	101545
LF2400IC EU26D24V REX	24V DC w/REX, Less SFIC	104982

* Locksets that secure both sides of the door are controlled by building codes and the Life Safety Code. In an emergency exit situation, failure to quickly unlock the inside knob could be hazardous or even fatal.

Grade 1 Lever Locks, LF2000 Series

Dimensions



Grade 1 Lever Locks, LF2000 Series

Parts and Accessories



234DL

- Deadlatches
- 2¾" Backset, UL Listed
- Finishes: US3, US10B, US32D

Mfr.#	EZ#
234DL3	009815
234DL32D	009816
234DL10B	009814



238DL

- Deadlatches
- 2¾" Backset, UL Listed
- Finishes: US3, US10B, US32D

Mfr.#	EZ#
238DL3	009822
238DL 10B	009820
238DL32D	041194



234SL

- Springlatches
- 2¾" Backset, UL Listed
- Finishes: US3, US32D

Mfr.#	EZ#
234SL3	009818
234SL32D	009819



238DL

- Springlatches
- 2¾" Backset, UL Listed
- Finishes: US10B, US32D

Mfr.#	EZ#
238SL10B	101459
238SL32D	101458



TPSFIC

- Tailpiece (TPSFIC428) for SFIC, 42.8 MM for Non-Clutch (LF)
- Tailpiece (TPSFIC480) 48.0 MM for Clutch (LFC)

Mfr.#	EZ#
TPSFIC428	089968
TPSFIC480	089969



LFTDP

- 2¼" Thick Door Kit

Mfr.#	EZ#
LFTDP26D	080706



5LINK

- 5" Backset extension link
- Use with 2¾" latch
- For Left Hand

Mfr.#	EZ#
5LINK	090846

Grade 1 Lever Locks, LF2000 Series

Parts and Accessories



SPACER FOR SFIC
• SFIC Tailpiece Spacer



ASA
• ASA Strike



T STRIKE
• Strike



LF63R3
• Spring for outside lever

<u>Mfr.#</u>	<u>EZ#</u>
SFIC SPACER	101397

<u>Mfr.#</u>	<u>EZ#</u>
ASA26D	008876

<u>Mfr.#</u>	<u>EZ#</u>
T STRIKE32D	066996
T STRIKE3	066995

<u>Mfr.#</u>	<u>EZ#</u>
LF63R3	104091

Grade 1 Lever Locks, LF2000 Series

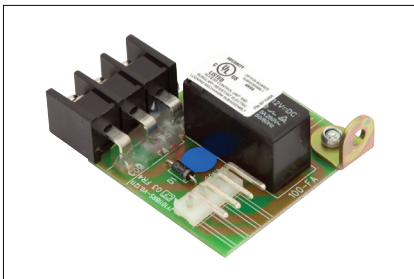
Parts & Accessories, Electrified



Mfr.#	EZ#
PDPS12/24	107045

PDPS12/24

- Takes 110V AC current (wall unit outlet) and converts it to either 12V or 24V DC current
- Battery backup has two hours backup power at full load during an A.C. power failure. Batteries will automatically recharge when failed power is restored.
- Works with electric exit devices, or with virtually any mag lock, electric strike, electric lever lock, etc.
- The power supply can control up to (4) delayed egress exit devices.
- Circuit breaks provide protection for the motherboard
- Restoring power is field selectable for automatic or manual.
- The PDPS12/24 must be ordered with the PD2ZONE Controller for the proper installation of a PD9200 Electrified Exit Device
- Up to two (2) PD9200 Electrified Exit Devices can be powered from one (1) PDPS12/24 with one (1) PD2ZONE installed
- Standard input options are 120V AC, 1.0 Amp or 240V AC, 0.5 Amp
- Output power is 24V DC, 2 Amp or 12V DC, 2 Amp
- Constructed of heavy 20 gauge steel.
- Dimensions: 10"H x 12½" W x 5"D.



PDFA

- Fire Alarm Interface for PDPS Power Supply, consists of one circuit board that plugs onto the PDPS12/24 Power Supply
- In the event a fire alarm is active, this board will remove power from PDPS12/24 output and any logic board output. The Fire Alarm Board can be configured for Automatic or Manual reset.

Mfr.#	EZ#
PDFA	107048



PDEPT

- Power Transfer
- Connects Wires from Door Frame to the Hinge Side of the Door
- Accepts up to ¾" diameter wire bundle
- Accommodates doors that swing up to 120°

Mfr.#	EZ#
PDEPT	107044



PDBB

- Battery Backup, batteries & charger for PDPS Power Supply
- Input from battery: 12/24V DC, at 2 Amps
- Output: 12V DC: 13.8VDC, 0.23A; 24V DC: 28V, 0.23A
- Battery backup time is 2 hours at 100% load

Mfr.#	EZ#
PDBB	107047

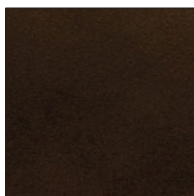
Grade 1 Lever Locks, LF2000 Series

Finishes

US3 / 505 / 605
Bright Brass



US10B / 613
Oil Rubbed Bronze



US26D / 626
Satin Chrome

