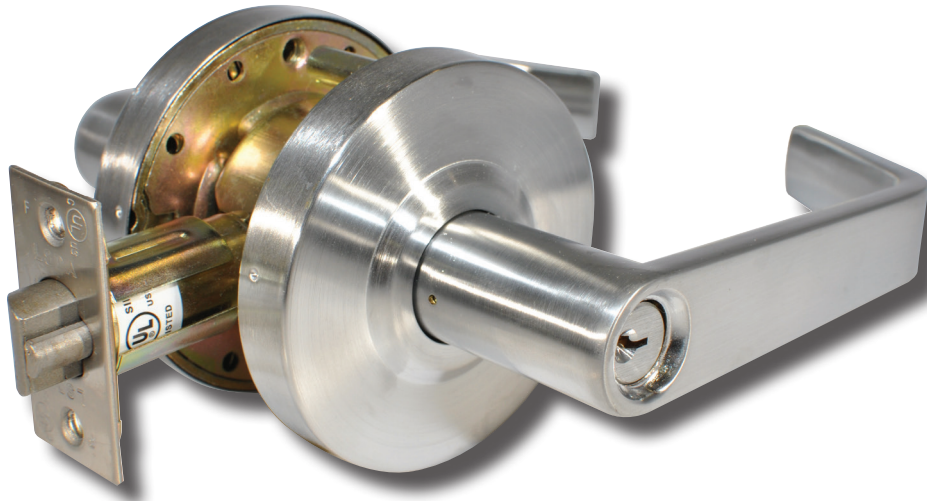


Grade 2 Lever Locks 300 Series



Overview

The 300 Series locks are designed for use in a variety of commercial applications. Equipped with a U.L. listed latchbolt, these locks can be used on 3-Hour fire doors. Built with independent return springs in each lever and with an optional clutch feature to protect against excessive torque, these levers resist sagging. The L-shaped lever design with less than 1/2" gap between the handle and the door meets most accessibility codes.

Compliance

- ANSI/BHMA 156.2 Series 4000, Grade 2
- Latch is UL Listed (USA and Canada, R14024) for 3-hour fire doors, included
- ADA: The Americans With Disabilities Act (ADA) states that locks shall be operable with one hand and shall not require tight grasping, tight pinching or twisting of the wrist.

Applications

- Offices
- Commercial Properties
- Retail Spaces
- Multi-Family Buildings



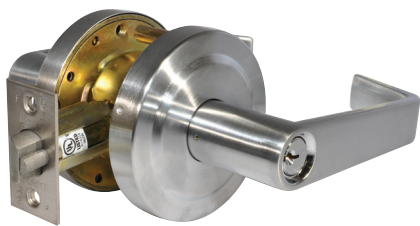
Grade 2 Lever Locks, 300 Series

Standard Features:

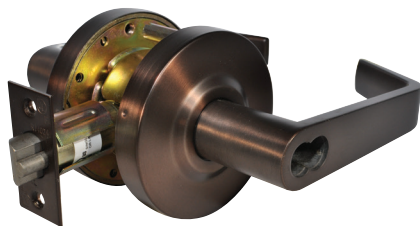
Latch	2 ³ / ₄ " Backset UL listed Latch (sold with lock where indicated); 2 ³ / ₈ " Backset available
Handing	Non-Handed
Materials	Zinc, Brass, Steel
Strike	4 ⁷ / ₈ " x 1 ¹ / ₄ " ANSI full lip
Door Prep	2 ¹ / ₈ " diameter bore, 1" crossbore, Optional Through Bolt holes (2); 2 ¹ / ₄ " x 1 ¹ / ₈ " latch face Concealed screw mounting
Door Thickness	1 ³ / ₈ " - 1 ³ / ₄ " standard; 1 ⁷ / ₈ " - 2 ¹ / ₄ " Thick Door Lock, Optional Thru Bolts
Rose Diameter	3 ²³ / ₆₄ "
Lever	Full length lever handle with ³ / ₈ " return
Keying	Cylinders: Equipped with SC4 rekeyable 6-pin brass cylinders, compatible with LSDA Replacement C500 cylinders and many other retrofit cylinders including most high security brands. SFIC: Some models prepped for Small Format Interchangeable Core (SFIC), such as 6- or 7-Pin Best® style cores

Grade 2 Lever Locks, 300 Series

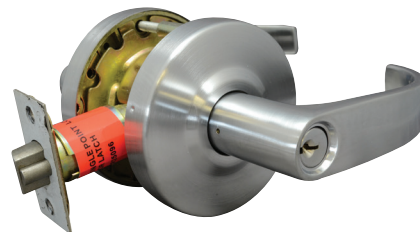
Designs



Madison (MA)
Entrance Function
Shown in 26D Finish

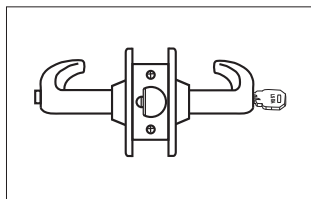


Lexington (LE)
Entrance Function, SFIC
Shown in 10BE Finish



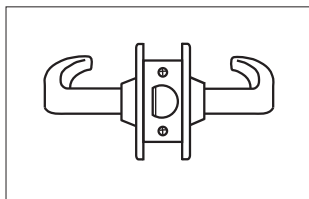
Sonoma (SO)
Entrance Function
Shown in 26D Finish

Functions



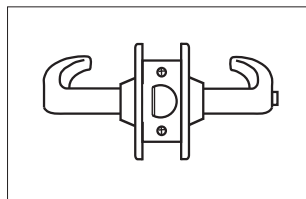
Entrance/Office

Pushing and turning inside button locks outside lever requiring use of key until button is manually unlocked. Pushing inside button locks outside lever until unlocked with a key or inside lever is turned. Inside lever always retracts latch. Available with or without Clutch.



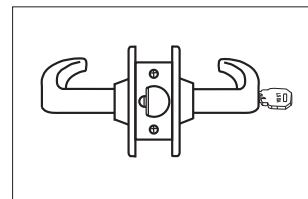
Passage

Both levers always retract the latch



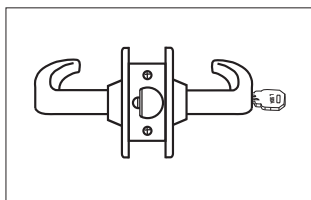
Privacy

Pushing inside button locks outside lever until inside lever is turned. Emergency tool can be used to unlock outside lever. Inside lever always retracts the latch.



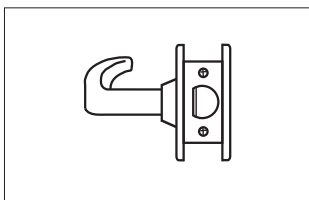
Storeroom

Outside lever never retracts the latch. Entrance by key only. Inside lever always retracts the latch. Available with or without Clutch.



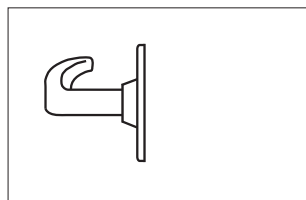
Classroom

Outside lever is locked and unlocked with a key in the outside cylinder. The inside lever always retracts the latch. Available with or without Clutch.



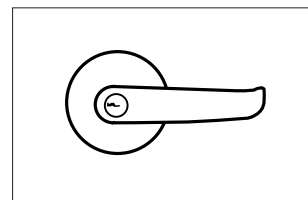
Exit

Blank plate outside, inside lever always free.



Dummy

Pull only, one side of door trim.



Benefits of a Clutch Lever

Clutch mechanism, or "free-wheeling" design offers an advantage over rigid locked leversets by reducing the torque applied to the outside lever

Grade 2 Lever Locks, 300 Series

How to Order

Entrance

Mfr.#	Keyway	Latch	EZ#
300MA3LLLC	L/Cyl.	L/Latch	090633
300MA10BE LLLC	L/Cyl.	L/Latch	090636
300MA26LLLC	L/Cyl.	L/Latch	090639
300MA26D LLLC	L/Cyl.	L/Latch	090642
300MA10BE IC/LL	SFIC, L/Cyl.	L/Latch	090637
300MA26D IC/LL	SFIC, L/Cyl.	L/Latch	090643
300MA3IC/LL	SFIC, L/Cyl.	L/Latch	090634
300LE3IC2-3/4UL	SFIC, L/Cyl.	2¾" UL	090125
300LE10BE IC2-3/4UL	SFIC, L/Cyl.	2¾" UL	090126
300LE26D IC2-3/4UL	SFIC, L/Cyl.	2¾" UL	090127
300SO26D IC2-3/4UL	SFIC, L/Cyl.	2¾" UL	090130
300MA10BE SC2-3/4UL	SC4	2¾" UL	090638
300MA26D SC2-3/4UL	SC4	2¾" UL	090644
300SO26D SC2-3/4UL	SC4	2¾" UL	087933
300LE3SC2-3/4UL	SC4	2¾" UL	087266
300LE10BE SC2-3/4UL	SC4	2¾" UL	087269
300LE26D SC2-3/4UL	SC4	2¾" UL	087270
300LE26SC2-3/4UL	SC4	2¾" UL	087268
300LE26D SC2-3/4UL TD	SC4	2¾" UL Thick Door	180985
300LE LFIC26D S	L/LFIC	2¾"	186125

Entrance with Clutch

Mfr.#	Keyway	Latch	EZ#
C300MA3LLLC	L/Cyl.	L/Latch	090645
C300MA10BE LLLC	L/Cyl.	L/Latch	090648
C300MA26D LLLC	L/Cyl.	L/Latch	090654
C300MA26D IC/LL	SFIC, L/Cyl.	L/Latch	090655
C300LE26D IC2-3/4UL	SFIC, L/Cyl.	2¾" UL	090133
C300LE10BE IC2-3/4UL	SFIC, L/Cyl.	2¾" UL	090132
C300LE3SC2-3/4UL	SC4	2¾" UL	087272
C300LE10BE SC2-3/4UL	SC4	2¾" UL	087275
C300LE26D SC2-3/4UL	SC4	2¾" UL	087276

Passage

Mfr.#	Latch	EZ#
310MA3LL	L/Latch	090891
310MA26D LL	L/Latch	090894
310LE3 2-3/4UL	2¾" UL	087278
310LE10BE2-3/4UL	2¾" UL	087281
310LE26D2-3/4UL	2¾" UL	087282
310MA10BE2-3/4UL	2¾" UL	090706
310MA26 2-3/4UL	2¾" UL	090707
310MA26D2-3/4UL	2¾" UL	090708
310MA3 2-3/4UL	2¾" UL	090705
310SO26D2-3/4UL	2¾" UL	087945

Privacy

Mfr.#	Latch	EZ#
320MA3LL	L/Latch	090895
320MA10B LL	L/Latch	090896
320MA26D LL	L/Latch	090898
320LE3 2-3/4UL	2¾" UL	087284
320LE26D2-3/4UL	2¾" UL	087288
320LE10BE2-3/4UL	2¾" UL	087287
320MA10BE 2-3/4UL	2¾" UL	090710
320MA26 2-3/4UL	2¾" UL	090711
320MA26D 2-3/4UL	2¾" UL	090712
320MA3 2-3/4UL	2¾" UL	090709
320SO26D2-3/4UL	2¾" UL	087951

Exit

Mfr.#	Design	EZ#
330LE26D2-3/4UL	Lexington	106939

Continued on the Next Page

Grade 2 Lever Locks, 300 Series

Storeroom

Mfr.#	Keyway	Latch	EZ#
340MA3LLLC	L/Cyl.	L/Latch	090657
340MA10BE LLLC	L/Cyl.	L/Latch	090660
340MA26LLLC	L/Cyl.	L/Latch	090663
340MA26D LLLC	L/Cyl.	L/Latch	090666
340LE3SC2-3/4UL	SC4	2¾" UL	087290
340LE10BE SC2-3/4UL	SC4	2¾" UL	087293
340LE26D SC2-3/4UL	SC4	2¾" UL	087294
340MA26D SC2-3/4UL	SC4	2¾" UL	090668
340SO26D SC2-3/4UL	SC4	2¾" UL	087957
340MA10BE IC/LL	SFIC, L/Cyl.	L/Latch	090661
340MA26D IC/LL	SFIC, L/Cyl.	L/Latch	090667
340LE3IC2-3/4UL	SFIC, L/Cyl.	2¾" UL	090137
340LE10BE IC2-3/4UL	SFIC, L/Cyl.	2¾" UL	090138
340LE26D IC2-3/4UL	SFIC, L/Cyl.	2¾" UL	090139
340SO26D IC2-3/4UL	SFIC, L/Cyl.	2¾" UL	090142
340LE26D SC2-3/4UL TD	SC4	2¾" UL Thick Door	180986
340LE LFIC26D S	L/LFIC	2¾"	186126

Storeroom with Clutch

Mfr.#	Keyway	Latch	EZ#
C340MA3LLLC	L/Cyl.	L/Latch	090669
C340MA26D LLLC	L/Cyl.	L/Latch	090678
C340LE3IC2-3/4UL	SFIC, L/Cyl.	2¾" UL	090143
C340LE10BE IC2-3/4UL	SFIC, L/Cyl.	2¾" UL	090144
C340LE26D IC2-3/4UL	SFIC, L/Cyl.	2¾" UL	090145
C340LE3SC2-3/4UL	SC4	2¾" UL	087296
C340LE10BE SC2-3/4UL	SC4	2¾" UL	087299
C340LE26D SC2-3/4UL	SC4	2¾" UL	087300

Classroom

Mfr.#	Keyway	Latch	EZ#
350MA3LLLC	L/Cyl.	L/Latch	090681
350MA10BE LLLC	L/Cyl.	L/Latch	090684
350MA26D LLLC	L/Cyl.	L/Latch	090690
350MA26D IC/LL	SFIC, L/Cyl.	L/Latch	090691
350LE26D IC2-3/4UL	SFIC, L/Cyl.	2¾" UL	090151
350MA26D SC2-3/4UL	SC4	2¾" UL	090692
350SO26D SC2-3/4UL	SC4	2¾" UL	087971
350LE3SC2-3/4UL	SC4	2¾" UL	087302
350LE10BE SC2-3/4UL	SC4	2¾" UL	087305
350LE26D SC2-3/4UL	SC4	2¾" UL	087306
350LE LFIC26D S	L/LFIC	2¾"	186127

Classroom with Clutch

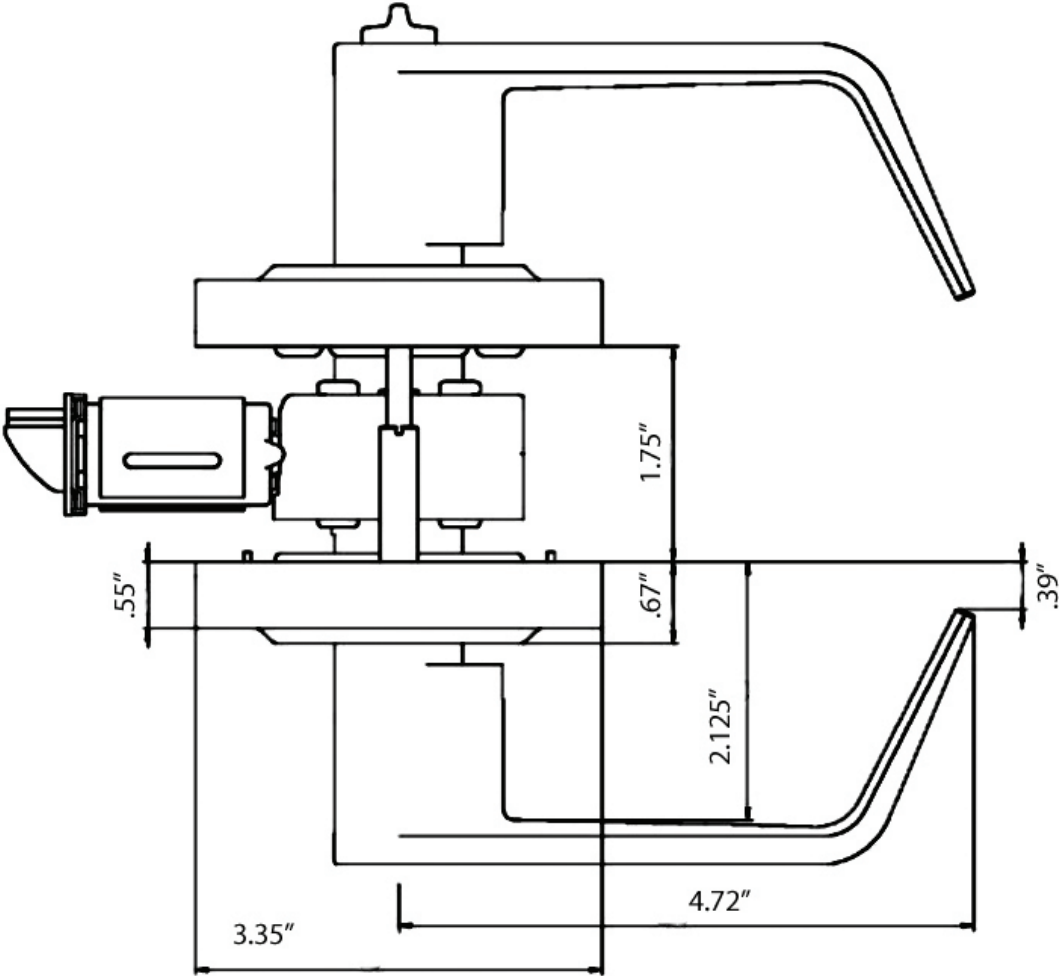
Mfr.#	Keyway	Latch	EZ#
C350MA26D LLLC	L/Cyl.	L/Latch	090702
C350LE26D IC2-3/4UL	SFIC, L/Cyl.	2¾" UL	090162
C350LE10BE SC2-3/4UL	SC4	2¾" UL	090157
C350LE26D SC2-3/4UL	SC4	2¾" UL	090158
C350LE3SC2-3/4UL	SC4	2¾" UL	090155

Dummy

Mfr.#	Design	EZ#
360LE10B	Lexington	105605
360LE26D	Lexington	088358

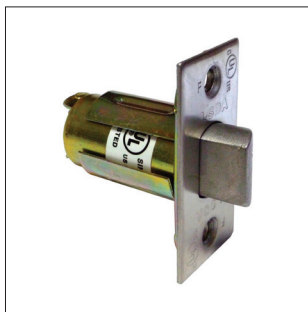
Grade 2 Lever Locks, 300 Series

Dimensions



Grade 2 Lever Locks, 300 Series

Parts and Accessories



314UL

- Springlatches
- 2¾" Backset
- UL Listed 3-Hour
- Finishes: US3, US10B, US26D

Mfr.#	EZ#
314UL3	090717
314UL10B	090718
314UL26D	090720



305UL

- Springlatches
- 2¾" Backset
- UL Listed 3-Hour
- Finishes: US3, US10B, US26D

Mfr.#	EZ#
305UL3	090725
305UL10B	090726
305UL26D	090728



385UL

- Deadlatches
- 2¾" Backset
- UL Listed 3-Hour
- Finishes: US3, US10B, US26D

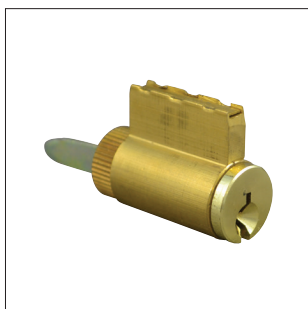
Mfr.#	EZ#
385UL3	090721
385UL10B	090722
385UL26D	090724



396UL

- Deadlatches
- 2¾" Backset
- UL Listed 3-Hour
- Finishes: US3, US10B, US26D

Mfr.#	EZ#
396UL3	090713
396UL 10B	090714
396UL26D	090716



300CYL

- Replacement Cylinder
- SC4 Keyway
- Drilled 6-pin, Keyed 6-pin, Keyed Different
- Finishes: US3, US26D

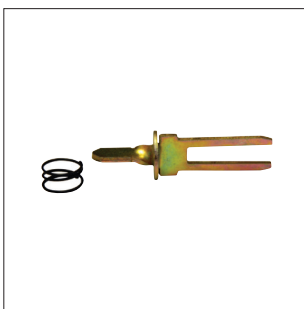
Mfr.#	EZ#
300CYL3SC	090729
300CYL26D SC	090730



TPLVR

- Regular Cylinder Tailpiece

Mfr.#	EZ#
TPLVR	009259



SFICTP

- Tailpiece for SFIC Levers

Mfr.#	EZ#
SFICTP300	101530



T STRIKE


- Strike
- Finishes: US3, US32D

Mfr.#	EZ#
T STRIKE32D	066996
T STRIKE3	066995

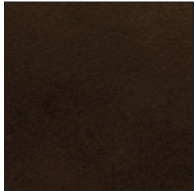
Grade 2 Lever Locks, 300 Series

Finishes


US3 / 505 / 605
Bright Brass



US10BE / 613
Oil Rubbed Bronze



US26 / 625
Bright Chrome



US26D / 626
Satin Chrome

