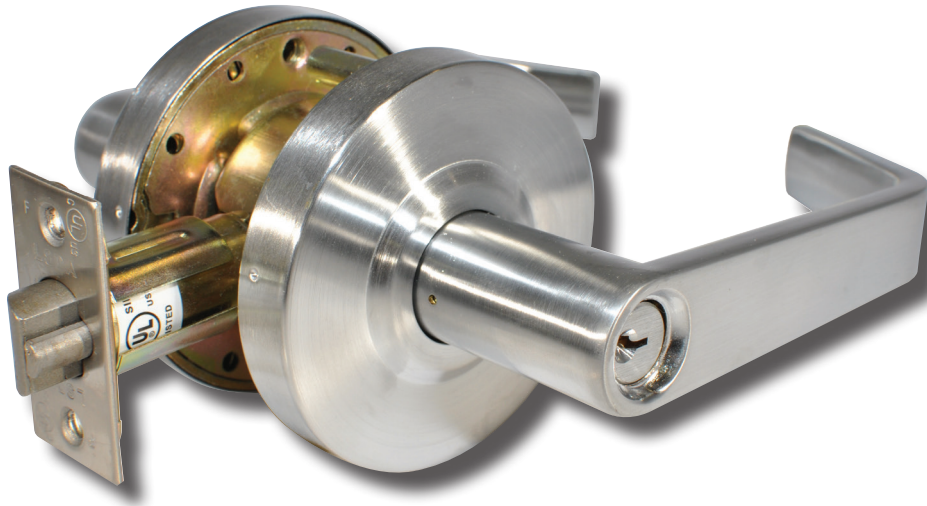


# Grade 2 Lever Locks 300 Series



## Overview

The 300 Series locks are designed for use in a variety of commercial applications. Equipped with a U.L. listed latchbolt, these locks can be used on 3-Hour fire doors. Built with independent return springs in each lever and with an optional clutch feature to protect against excessive torque, these levers resist sagging. The L-shaped lever design with less than ½" gap between the handle and the door meets most accessibility codes.

## Compliance

- ANSI/BHMA 156.2 Series 4000, Grade 2
- Latch is UL Listed (USA and Canada, R14024) for 3-hour fire doors, included
- ADA: The Americans With Disabilities Act (ADA) states that locks shall be operable with one hand and shall not require tight grasping, tight pinching or twisting of the wrist.

## Applications

- Offices
- Commercial Properties
- Retail Spaces
- Multi-Family Buildings



# Grade 2 Lever Locks, 300 Series

## Standard Features:

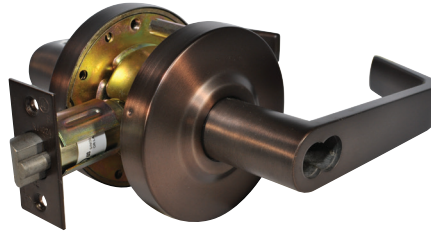
<b>Latch</b>	2 <sup>3</sup> / <sub>4</sub> " Backset UL listed Latch (sold with lock where indicated); 2 <sup>3</sup> / <sub>8</sub> " Backset available
<b>Handing</b>	Non-Handed
<b>Materials</b>	Zinc, Brass, Steel
<b>Strike</b>	4 <sup>7</sup> / <sub>8</sub> " x 1 <sup>1</sup> / <sub>4</sub> " ANSI full lip
<b>Door Prep</b>	2 <sup>1</sup> / <sub>8</sub> " diameter bore, 1" crossbore, Optional Through Bolt holes (2); 2 <sup>1</sup> / <sub>4</sub> " x 1 <sup>1</sup> / <sub>8</sub> " latch face
<b>Door Thickness</b>	1 <sup>3</sup> / <sub>8</sub> " - 1 <sup>3</sup> / <sub>4</sub> " standard; 1 <sup>7</sup> / <sub>8</sub> " - 2 <sup>1</sup> / <sub>4</sub> " Thick Door Lock, Optional Thru Bolts
<b>Rose Diameter</b>	3 <sup>23</sup> / <sub>64</sub> "
<b>Keying</b>	Cylinders: Equipped with SC4 rekeyable 6-pin brass cylinders, compatible with LSDA Replacement C500 cylinders and many other retrofit cylinders including most high security brands. SFIC: Some models prepped for Small Format Interchangeable Core (SFIC), such as 6- or 7-Pin Best® style cores

# Grade 2 Lever Locks, 300 Series

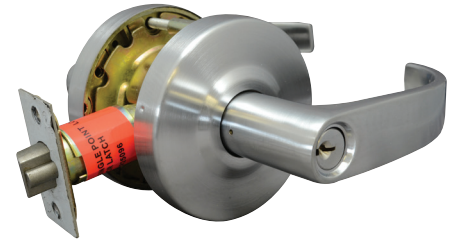
## Designs



Madison (MA)  
Entrance Function  
Shown in 26D Finish

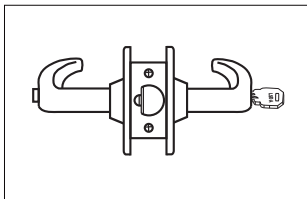


Lexington (LE)  
Entrance Function, SFIC  
Shown in 10B Finish



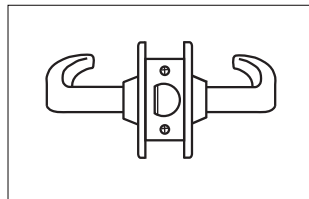
Sonoma (SO)  
Entrance Function  
Shown in 26D Finish

## Functions



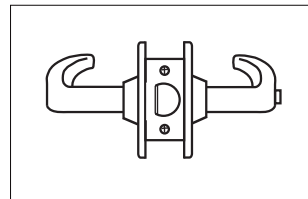
### Entrance/Office

Pushing and turning inside button locks outside lever requiring use of key until button is manually unlocked. Pushing inside button locks outside lever until unlocked with a key or inside lever is turned. Inside lever always retracts latch. Available with or without Clutch.



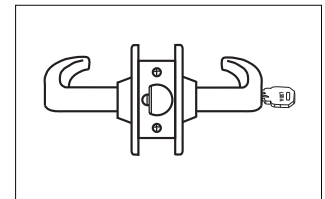
### Passage

Both levers always retract the latch



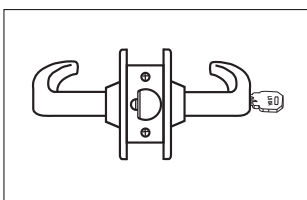
### Privacy

Pushing inside button locks outside lever until inside lever is turned. Emergency tool can be used to unlock outside lever. Inside lever always retracts the latch.



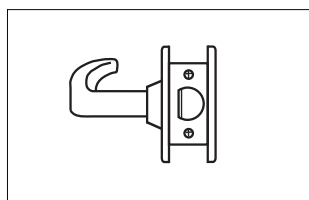
### Storeroom

Outside lever never retracts the latch. Entrance by key only. Inside lever always retracts the latch. Available with or without Clutch.



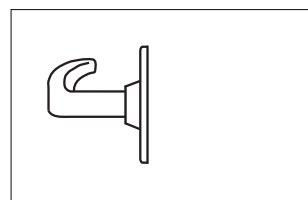
### Classroom

Outside lever is locked and unlocked with a key in the outside cylinder. The inside lever always retracts the latch. Available with or without Clutch.



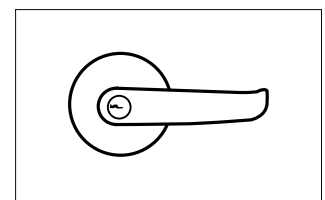
### Exit

Blank plate outside, inside lever always free



### Dummy

Pull only, one side of door trim.



### Benefits of a Clutch Lever

Clutch mechanism, or "free-wheeling" design offers an advantage over rigid locked leversets by reducing the torque applied to the outside lever

# Grade 2 Lever Locks, 300 Series

## Finishes

**US3 / 505 / 605**  
Bright Brass



**10B / 613**  
Oil Rubbed Bronze



**US26 / 625**  
Bright Chrome



**US26D / 626**  
Satin Chrome

